

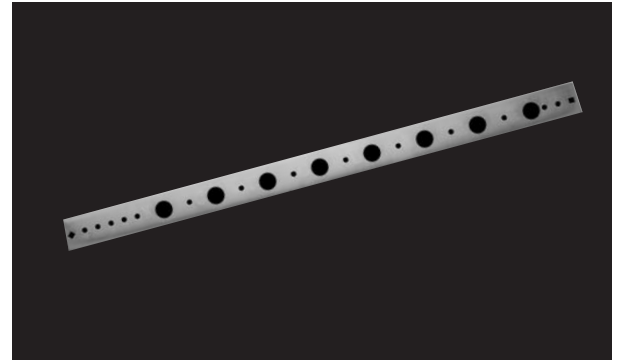
PFCB20D, PFCB26D

Copper Bonded Steel Brackets



Product Features

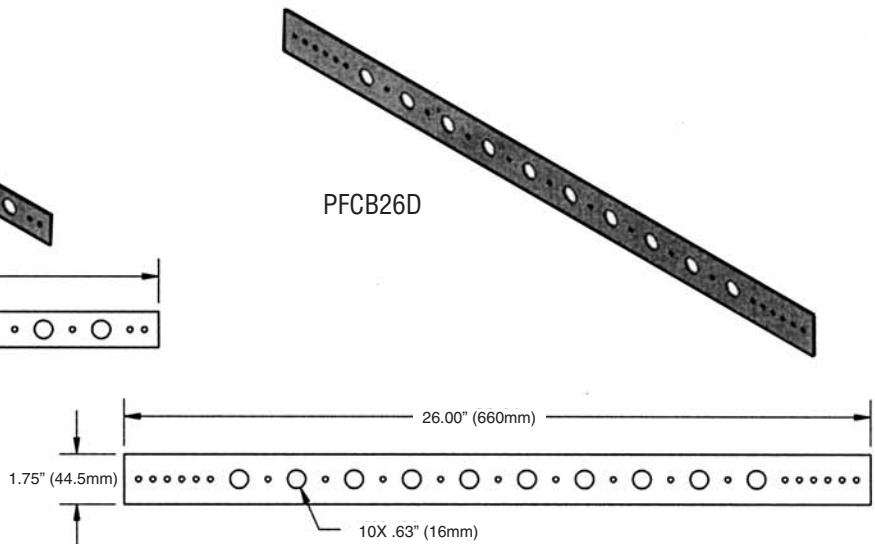
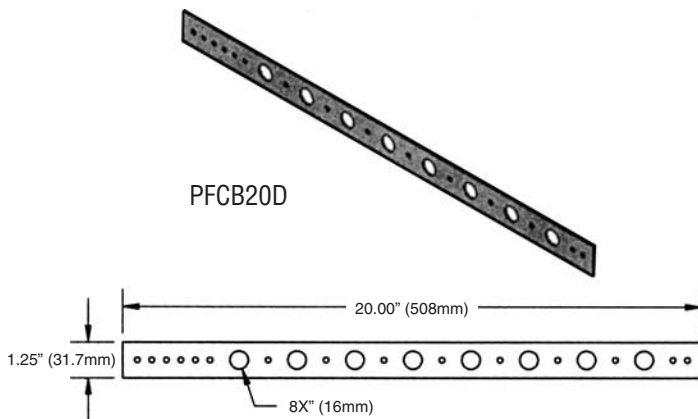
- Heavy-gauge (16 gauge) copper-bonded steel
- 1/2" (12.7mm) holes on 2" (50.8mm) centers
- Designed to position copper water supplies for sinks, lavatories, and other fixtures
- 16 gauge



PFCB20D

No.	Description	Box Qty.
PFCB20D	20" (508mm) length	50
PFCB26D	26" (660mm) length	50

Product Specifications



Installation Instructions

- Solder copper tubing to the bracket. Heat the pipe, not the bracket.
- Load rating 25 lbs.

