

**PFCNB20DF**

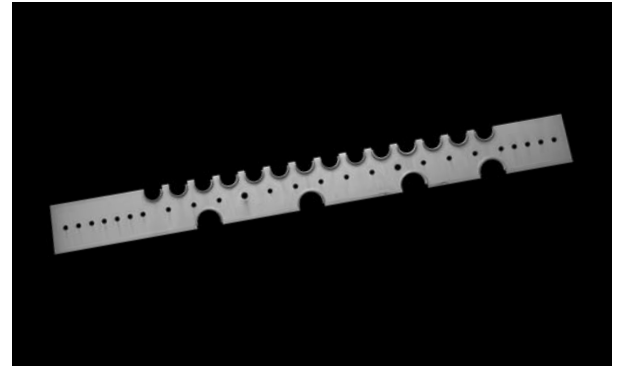
## ***Copper Bonded Steel Bracket with Extruded Notches***



### ***Product Features***

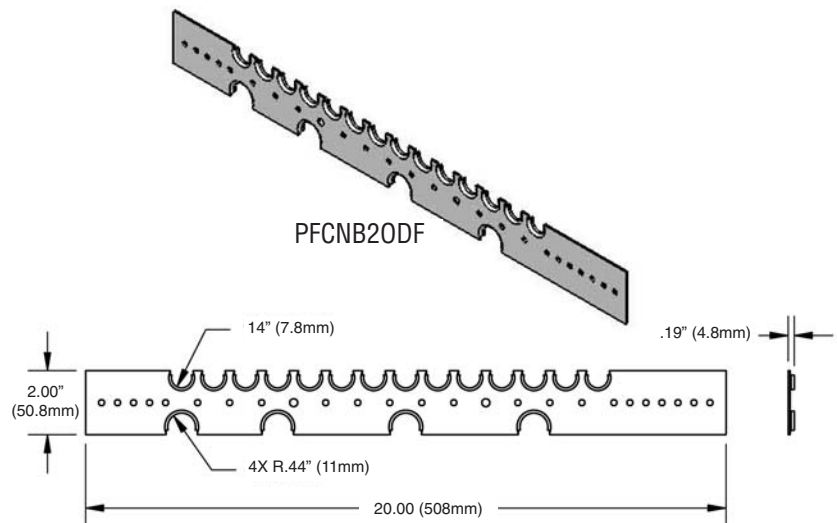
- 16 gauge copper bonded steel
- Extruded notches run 1/2" (12.7mm) tubing on 1" (25.4mm) centers and 3/4" (17.7mm) tubing on 4" (101.6mm) centers

No.	Description	Box Qty.
PFCNB20DF	20" (508mm) length	50



**PFCNB20DF**

### ***Product Specifications***



### ***Installation Instructions***

- Solder copper tubing to the bracket. Heat the pipe, not the bracket.
- Load rating 25 lbs.

