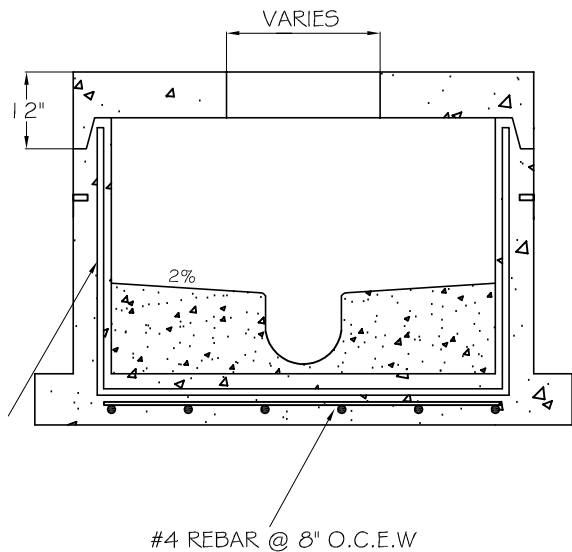


**60" MANHOLE - EXTENDED BASE
WITH REDUCING CONE**

**FLATTOP ILLUSTRATION
FOR SHALLOW MANHOLE**



3"X8"W3XW2.5 WELDED WIRE
IN ALL SURFACES & BOTTOM

#4 REBAR @ 8" O.C.E.W

GENERAL NOTES:

- WATER TIGHT GASKETS AT ALL PIPE CONNECTIONS
- HOLES AS SPECIFIED - MAX. DIA. = 40" DIA.
- AVG. WEIGHT OF 4' DEEP BASE W/8" INVERT = 12,412# - RISER WEIGHT = 1,570#/V.F.
- MANUFACTURED TO YOUR SPECIFICATIONS
- INVERT DEPTH SHALL BE EQUAL TO THE LARGEST PIPE DIAMETER

The Turner Company

11049 Highway 287
Rhome, Tx 76078
(817) 638-9053

Product:
60" I.D. MANHOLE - EXTENDED BASE

Concrete:
5,000 PSI MIN. - 28 DAY STRENGTH

Reinforcement:
MEETS OR EXCEEDS ASTM-C-478-96 REQUIREMENT

Size: Date: DWG No.

Weight: City: