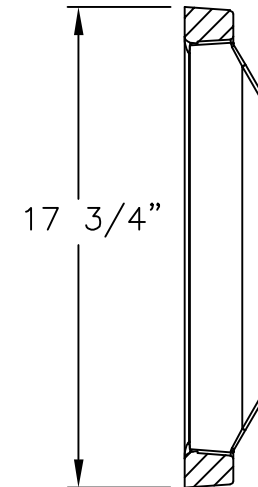
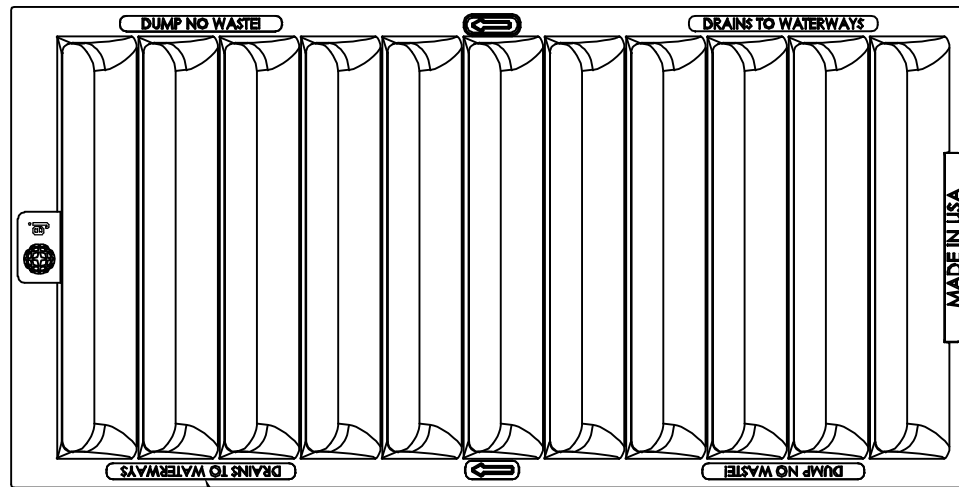


# 7030M4 Grate



## Product Number

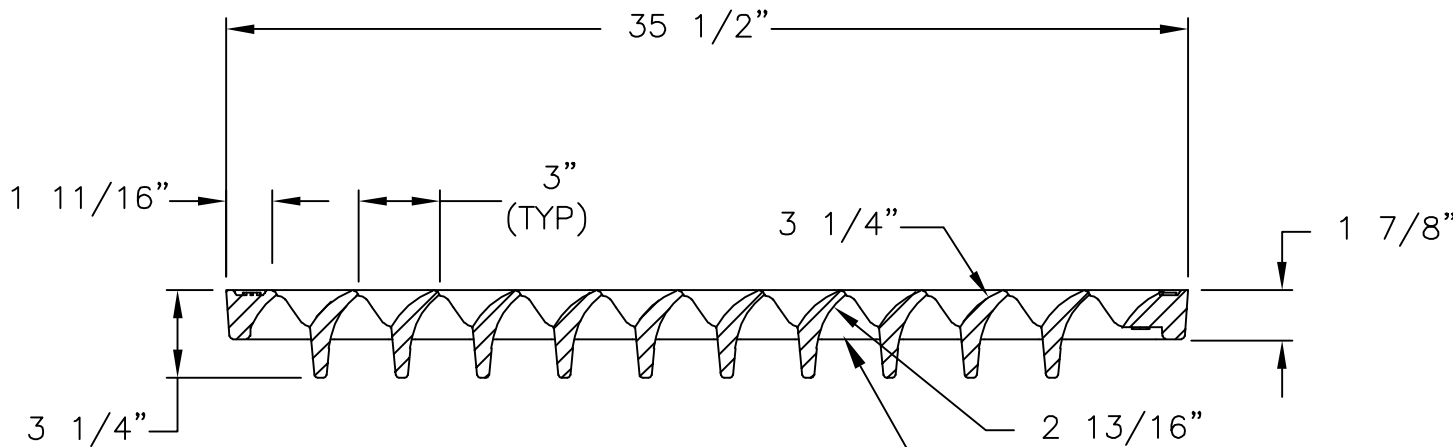
00703050

## Design Features

- Materials  
Gray Iron (CL35B)
- Design Load  
Heavy Duty
- Open Area  
272 sq in
- Coating  
Dipped
- ✓ Designates Machined Surface

3/8" SHARP FACE  
GOTHIC TYP

GRATE SECTION



GRATE SECTION

7030M4  
PROD NO.  
MO/DY/YR X  
ASTM A48 CL35B

## Certification

- ASTM A48
- 
- 
- Country of Origin: USA

## Drawing Revision

5/16/2005 Designer: SBB  
5/17/2021 Revised By: MAH

## Disclaimer

Weights (lbs./kg) dimensions (inches/mm) and drawings provided for your guidance. We reserve the right to modify specifications without prior notice.

CONFIDENTIAL: This drawing is the property of EJ GROUP, Inc., and embodies confidential information, registered marks, patents, trade secret information, and/or know how that is the property of EJ GROUP, Inc. Copyright © 2012 EJ GROUP, Inc. All rights reserved.

## Contact

800 626 4653  
ejco.com