



8 Degree™
Under-mount Bar Sink
K-3671

Features

- 21-inch minimum base cabinet width.
- 16-gauge stainless steel.
- Under-mount.
- Single bowl.
- 9-inch depth.
- 18" (457 mm) x 18" (457 mm)

Optional Accessories

K- 3140 Cutting Board
K- 8801 Sink Strainer

Components

Product includes:

K- 6134 Sink Rack
91915 Hardware Kit
K- 6133 Wine Glass Rack



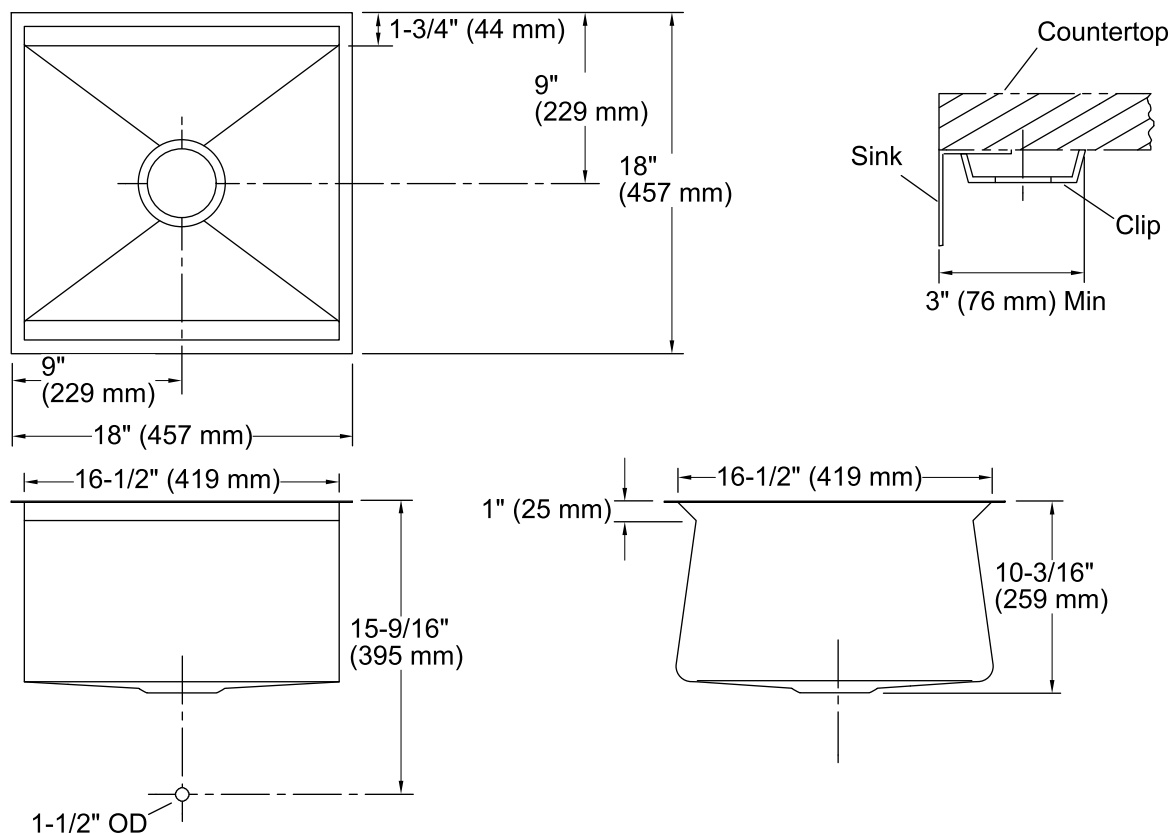
ADA

Codes/Standards

ASME A112.19.3/CSA B45.4
ADA
ICC/ANSI A117.1

**Lifetime Limited Warranty for
KOHLER® Stainless Steel Sinks**

See website for detailed warranty information.



Technical Information

All product dimensions are nominal.

Bowl configuration: Single

Installation: Under-mount

Bowl area (Only) Length: 16-1/2" (419 mm)
Width: 16-1/2" (419 mm)
Bowl depth: 9-3/4" (248 mm)

Drain hole: 3-5/8" (92 mm)

Template: Under-mount, 1093326-7, required,
included

Notes

Install this product according to the installation guide.

Allow a minimum of 3" (76 mm) clearance around the sink rim for clip attachment.

ADA compliant when installed to the specific requirements of these regulations.