

## Model DPV-1 Dry Pipe Valve External Resetting

### General Description

The TYCO Model DPV-1 Dry Pipe Valves are differential valves used to automatically control the flow of water into dry pipe fire protection sprinkler systems upon operation of one or more automatic sprinklers. The DPV-1 also provides for actuation of fire alarms upon system operation. The Model DPV-1 features are as follows:

- External reset.
- 250 psi (17,2 bar) pressure rating.
- Unique offset single clapper design enabling a simple compact valve to minimize installation labor.
- Ductile iron construction to ensure a lightweight valve to minimize shipping cost.
- A variety of inlet and outlet connections.
- Compact, Pre-Trimmed, and Semi-Assembled, easy to operate valve trim.
- Simple reset procedure through the elimination of priming water.

Dry pipe sprinkler systems are used in unheated warehouses, parking garages, store windows, attic spaces, loading docks, and other areas exposed to freezing temperatures, where water filled pipe cannot be utilized. When set for service, the dry pipe sprinkler system is pressurized with air (or nitrogen). The loss of pressure through an operated automatic sprinkler in response to heat from a fire permits the DPV-1 Dry Pipe Valve to open and allow a flow of water into the sprinkler system piping. Table B establishes the minimum required system air pressure that includes a safety factor to help prevent false operations that might occur due to water supply fluctuations.



**Available Sizes and End Connections**

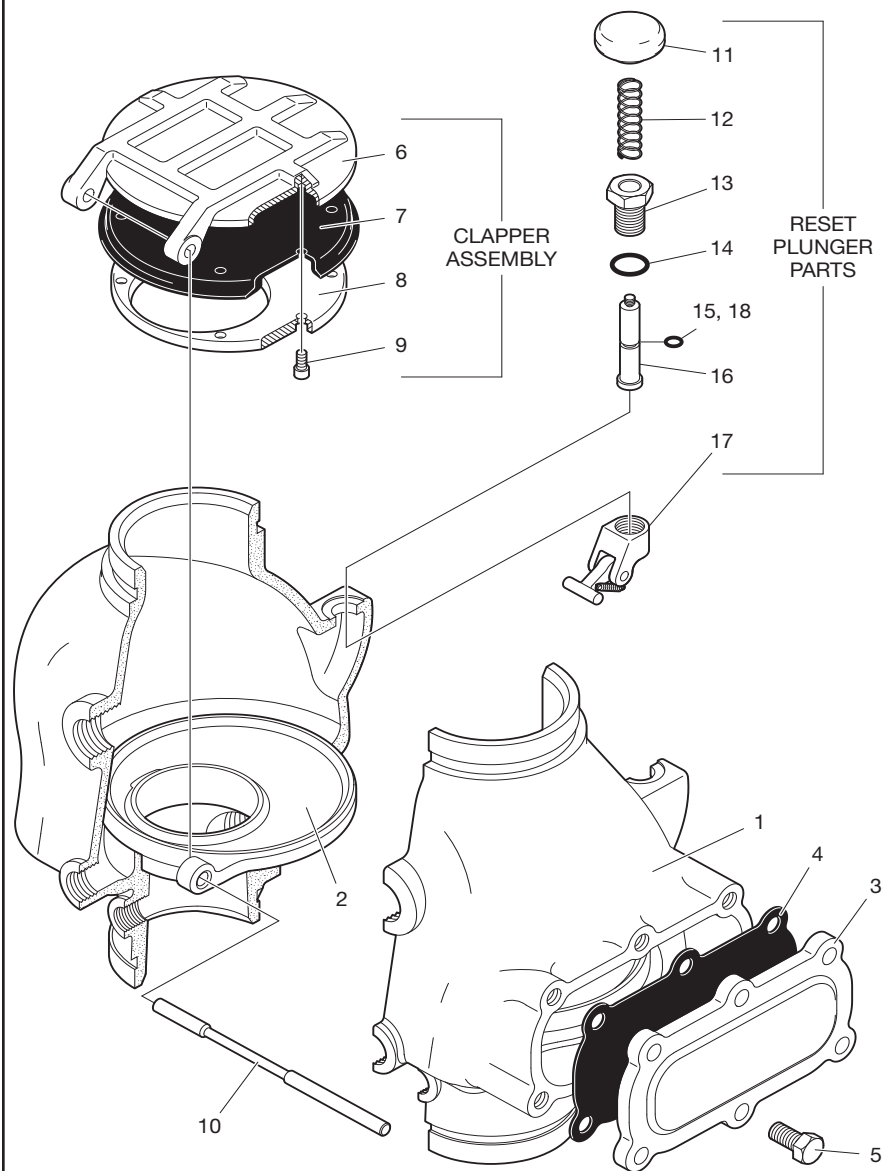
End Connection	Nominal Valve Size			
	2-1/2 Inch (DN65)	3 Inch (DN80)	4 Inch (DN100)	6 Inch (DN150)
Flange x Flange	N/A	N/A	•	•
Flange x Groove	N/A	N/A	•	•
Groove x Groove	•	•	•	•

• = Available  
N/A = Not Available

#### NOTICE

*The Model DPV-1 Dry Pipe Valves described herein must be installed and maintained in compliance with this document, as well as with the applicable standards of the National Fire Protection Association, in addition to the standards of any other authorities having jurisdiction. Failure to do so may impair the performance of these devices.*

*The owner is responsible for maintaining their fire protection system and devices in proper operating condition. Contact the installing contractor or product manufacturer with any questions.*



NO.	DESCRIPTION	QTY.	REF.
1	Valve Body . . . . .	1	NR
2	Air and Water Seat . . . . .	1	NR
3	Handhole Cover . . .	1	NR
4	Handhole Cover Gasket . . . . .	1	(b)
5	1/2-13 UNC x 1" Hex Head Cap Screw: 2-1/2 & 3 Inch Valves . . . . .	5	CH
	4 Inch Valve . . . . .	6	CH
6	Clapper . . . . .	1	(a)
7	Clapper Facing . . . .	1	(a) or (b)
8	Clapper Facing Retaining Plate . . . .	1	(a)
9	2-1/2 and 3 Inch Valves: 1/4" x 3/8" Long #10-32 Shoulder Screw . . . . .	5	(a)
	4 Inch Valve: 1/4-20 UNC x 1/2" Socket Head Cap Screw . . . . .	7	(a)
10	Clapper Hinge Pin . . . . .	1	(a)
11	Reset Knob . . . . .	1	(c) or (d)
12	Reset Spring . . . . .	1	(c)
13	Reset Bushing . . . .	1	(c)
14	Reset Bushing O-Ring . . . . .	1	(b), (c) or (e)
15	Reset Plunger O-Ring . . . . .	1	(b) or (c)
16	Reset Plunger . . . . .	1	(c)
17	Reset Latch Subassembly . . . . .	1	(c)
18	Dow Corning FS3452 Flourosilicone Grease, 1.5 g . . . . .	1	(b) or (c)

NR: Not Replaceable  
CH: Common Hardware

REPLACEMENT PARTS		
NO.	DESCRIPTION	P/N
(a)	Clapper Assembly Includes Items 6-10: 2-1/2 & 3 Inch Valves . .	92-310-2-203
	4 Inch Valve . . . . .	92-310-2-403
(b)	Repair Parts Kit Includes Items 4, 7, 14, 15, & 18: 2-1/2 & 3 Inch Valves . .	92-310-1-204
	4 Inch Valve . . . . .	92-310-1-404
(c)	Reset Plunger Parts Kit Includes Items 11-18 . .	92-310-1-405
(d)	Reset Knob, Item 11. . .	92-310-1-406
(e)	Reset Bushing O-Ring, Item 14 . . . . .	92-310-1-407

FIGURE 1 - PART 1 OF 2  
MODEL DPV-1 DRY PIPE VALVE  
2-1/2, 3, AND 4 INCH (DN65, DN80, DN100) ASSEMBLIES