

## SPECIFICATIONS

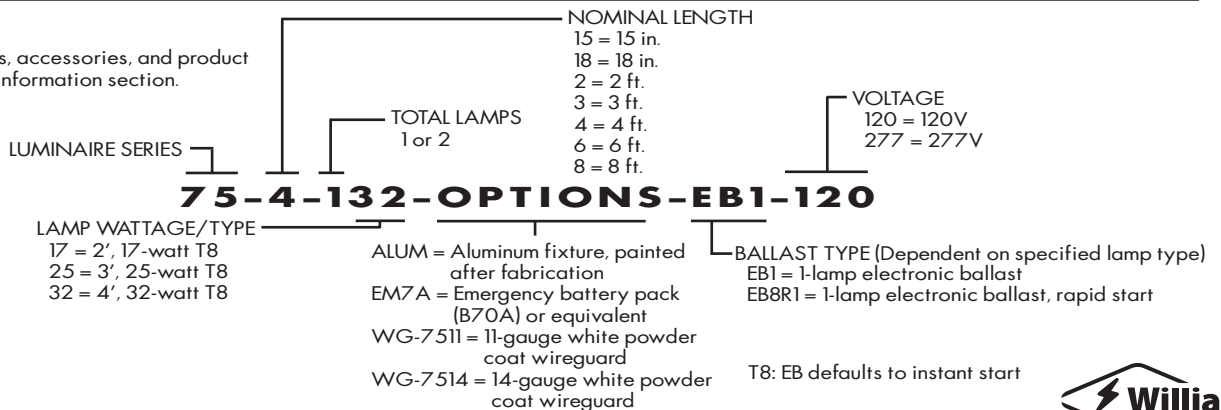
- HOUSING – 22-gauge die-formed C.R.S. or optional .032" thick aluminum.
- FINISH – 92% minimum average reflective white powder coat with multi-stage iron/phosphate prepared metal.
- ELECTRICAL – Electronic ballast standard (where available), rated Class P.
- LABELS – UL/CUL listed as fluorescent luminaire suitable for dry or damp locations.
- MOUNTING – Surface or suspended.

## FEATURES

- Factory-mounted, prewired sockets cut installation time.
- Hinging/locking lamp bracket cuts installation time.
- Small profile allows inconspicuous placement in confined spaces.
- Available in lengths of 15", 18", 2', 3', 4', 6', and 8' for use in many different applications.
- Special reflectors available for precise light distribution—consult factory.
- One quarter-turn fastener secures wireway cover to housing.
- End plates used as channel connector for continuous row applications.
- Ballast secured by two captive bolts and nuts to ensure a tight, reliable fit for maximum heat dissipation and minimal ballast noise.
- All parts painted after fabrication to facilitate installation, increase efficiency, and inhibit corrosion.
- This fixture is proudly made in the USA.

## SUBMITTAL INFORMATION

For more options, accessories, and product details, refer to Information section.



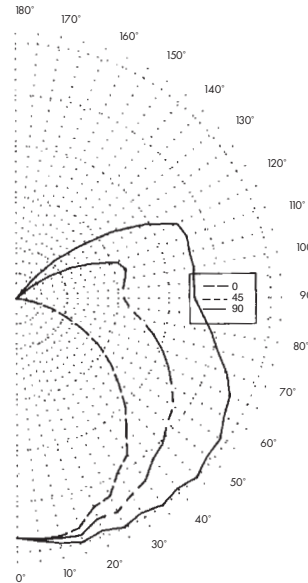
FLUORESCENT LIGHTING

Williams Catalog #75-4-132-EB1-120  
 Test Report #8589.0, Dated 12/21/95

Lamp Type: F32T8/SPX35/RS  
 Lamp Quantity: 1

**CANDLEPOWER DISTRIBUTION**

VERT. ANG.	HORIZONTAL ANGLE			ZONAL LUMENS
	0	45	90	
0	485.	485.	485.	
5	489.	489.	492.	46.7
15	481.	496.	511.	140.5
25	442.	477.	511.	220.7
35	387.	451.	511.	283.3
45	309.	416.	513.	321.4
55	230.	385.	500.	336.9
65	146.	338.	474.	323.3
75	69.	285.	419.	281.1
85	11.	230.	376.	232.8
90	0.	217.	359.	
95	0.	216.	359.	217.3
105	0.	229.	361.	210.9
115	0.	169.	358.	165.3
125	0.	77.	235.	85.8
135	0.	8.	108.	26.3
145	0.	0.	11.	1.8
155	0.	0.	0.	.0
165	0.	0.	0.	.0
175	0.	0.	0.	.0
180	0.	0.	0.	



**LUMEN SUMMARY**

ZONE	LUMENS	% LAMP	% FIXTURE
0 - 30	408.	13.8	14.1
0 - 40	691.	23.4	23.9
0 - 60	1350.	45.7	46.6
0 - 90	2187.	74.1	75.6
90 - 120	593.	20.1	20.5
90 - 130	679.	23.0	23.5
90 - 150	707.	24.0	24.4
90 - 180	707.	24.0	24.4
Total Luminaire			
0-180	2894.	98.1	100.0

**ZONAL CAVITY COEFFICIENTS**

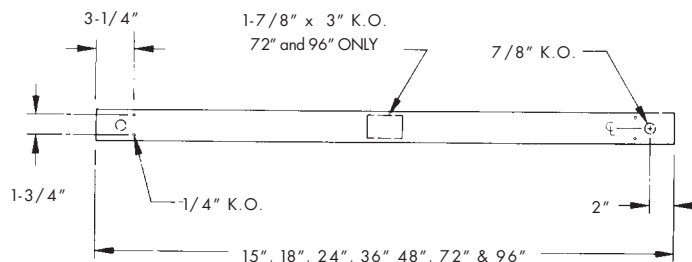
EFFECTIVE FLOOR CAVITY REFL. = .20

WALL RCR	.80			.70			.50		
	.70	.50	.30	.70	.50	.30	.50	.30	.10
0	111	111	111	103	106	106	96	.96	96
1	.99	.93	.88	.93	.88	.84	.80	.76	.73
2	.88	.79	.72	.84	.75	.68	.68	.62	.58
3	.80	.69	.60	.76	.66	.58	.59	.53	.47
4	.73	.61	.51	.69	.58	.49	.52	.45	.40
5	.66	.53	.44	.62	.50	.42	.46	.38	.33
6	.61	.47	.38	.57	.45	.36	.41	.33	.28
7	.56	.42	.33	.53	.40	.32	.36	.29	.24
8	.51	.38	.29	.49	.36	.28	.33	.26	.21
9	.47	.34	.26	.45	.32	.25	.29	.23	.18
10	.44	.31	.23	.42	.29	.22	.27	.20	.16

**TOTAL LUMINAIRE OPTICAL EFFICIENCY = 98.1 %**

SPACING CRITERIA: ACROSS= 1.6 ALONG= 1.3

**BACK VIEW**



H. E. WILLIAMS, INC.

H.E. Williams, Inc. • Carthage, Missouri • [www.hewilliams.com](http://www.hewilliams.com) • 417-358-4065 • Fax: 417-358-6015

Information contained herein is subject to change without notice.

HEWJP43031 09/01/11RJ