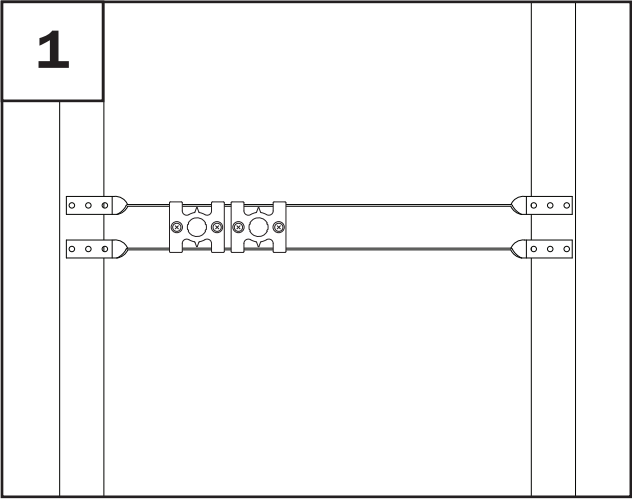


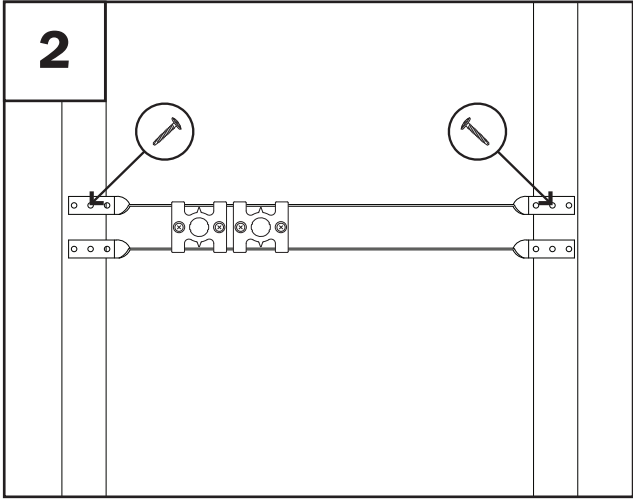
Strong ArmTM

with Lock BlocksTM

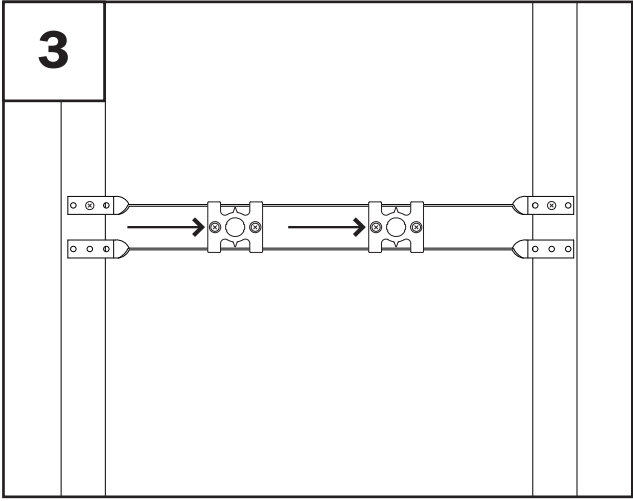
Instruction Sheet



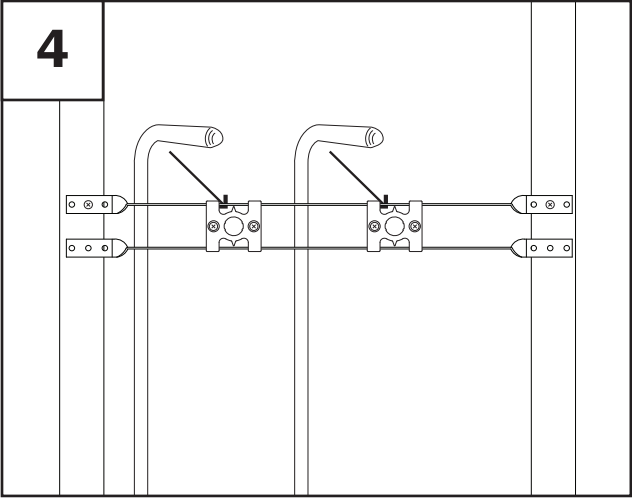
etermine stub out height.



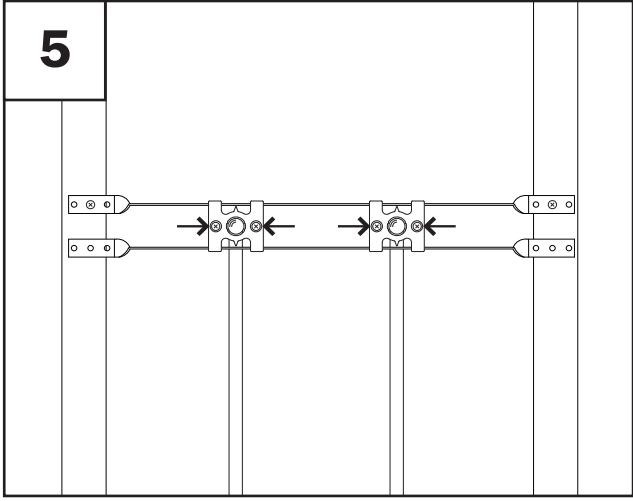
Secure top bracket to studs on each side of stud bay. Do NOT secure bottom bracket yet.



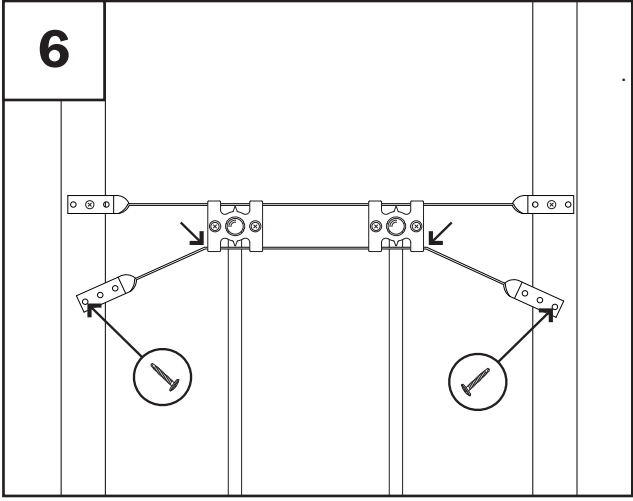
With bottom bracket still loose, slide Lock Blocks across brackets to desired stub out location.



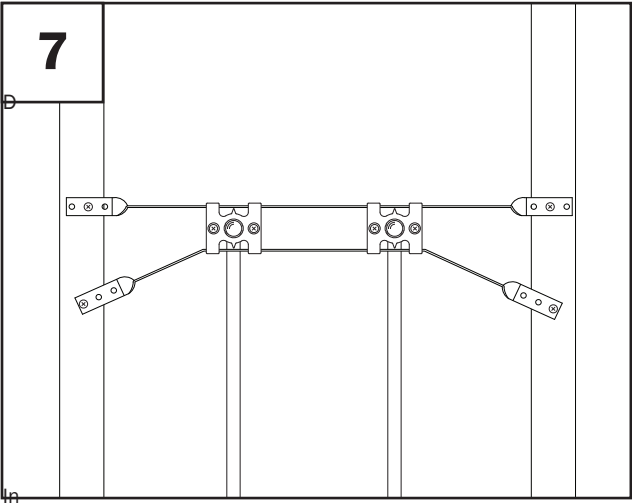
stall stub outs or stub out bows.



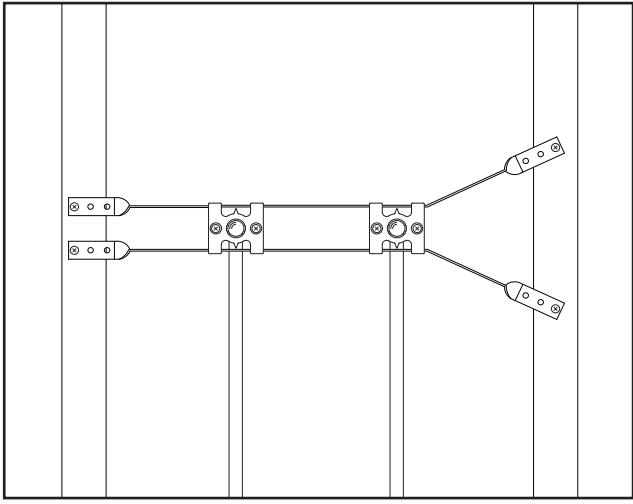
Tighten each screw on each block to secure stub out and prevent horizontal movement.



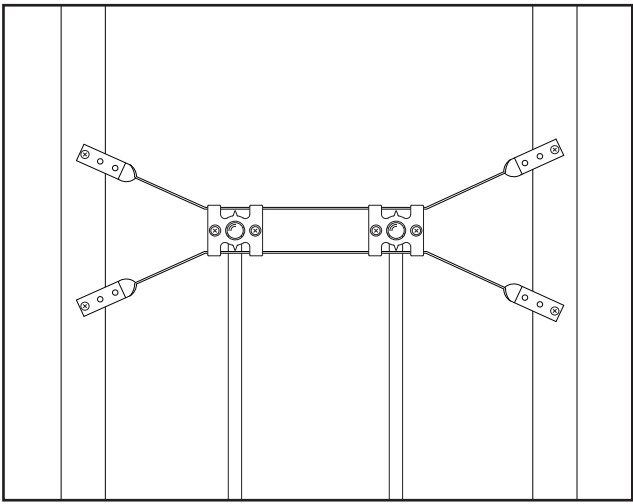
Bend bottom bracket as close as possible to Lock Block and secure bracket to stud.



mpleted installation (as commended).



Alternate completed installation.



Alternate completed installation.

Co
re

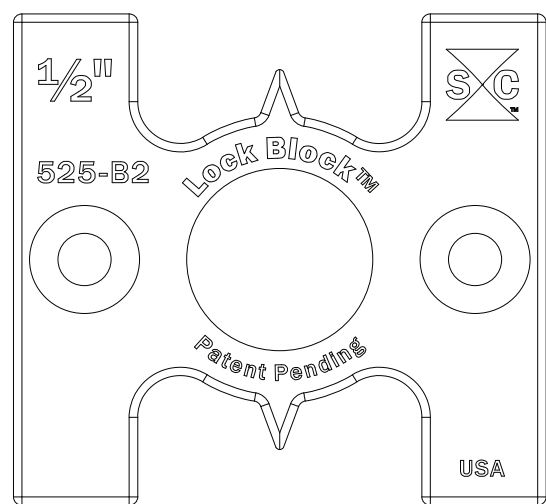
Patent # 8,141,831

800-821-3944 • www.siouxchief.com

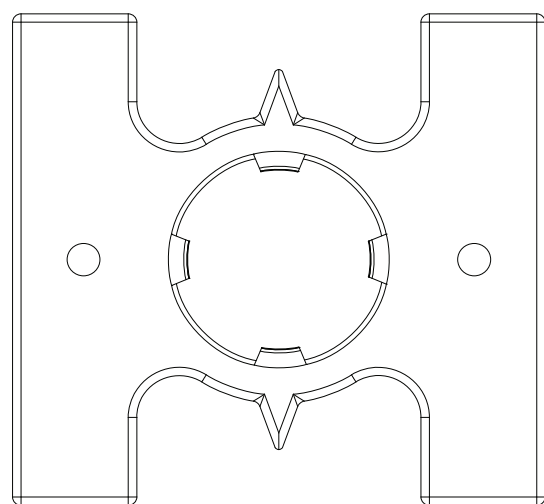
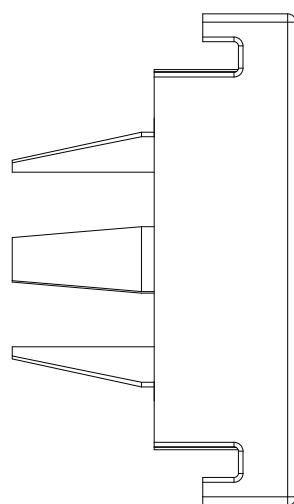
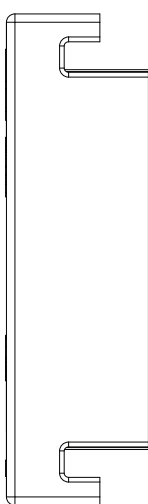
1-#1 S-525-LB ©2010 SIOUX CHIEF MFG.



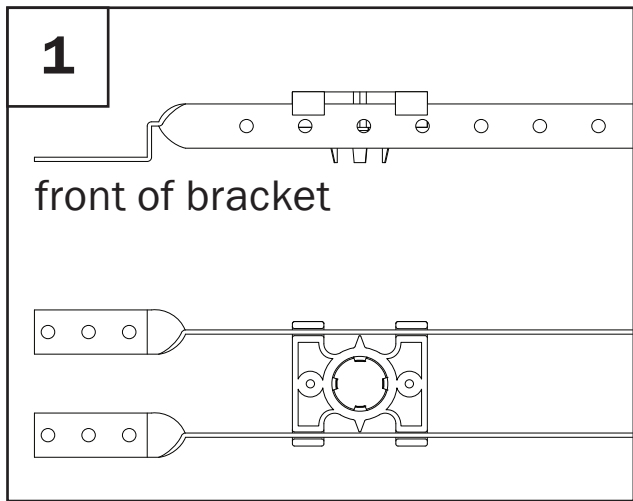
Strong ArmTM
with **Lock BlocksTM**
Bulk Assembly Instruction Sheet



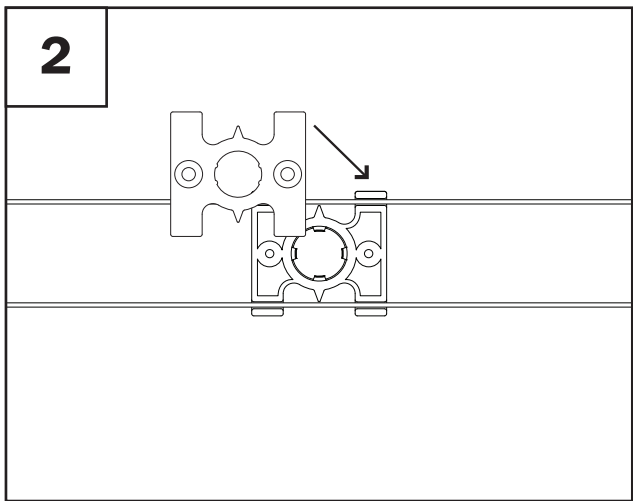
Female (Front) Block



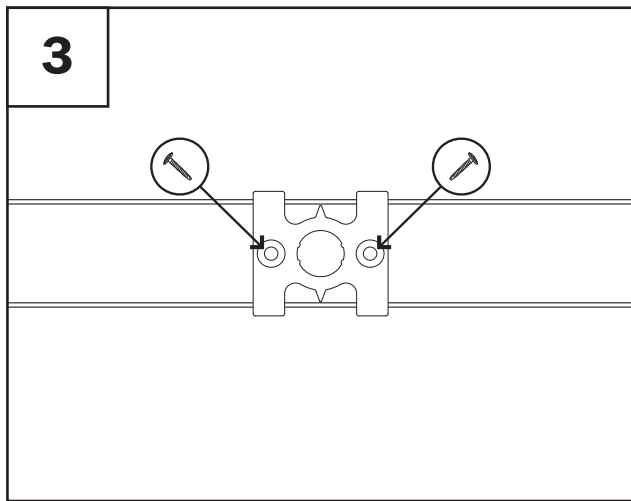
Male (Back) Block



Lay a pair of Strong Arm brackets in the upper and lower bracket slots of the male Lock Block.
NOTE: The male block must be installed on the back of the brackets, as shown above.



Position the female block directly on top of the male block. Be sure the each bracket is captured by the bracket slots on both the male and female blocks.



Insert one #6 × 1" screw in each hole and tighten so the blocks are secured together, but they are able to slide back and forth along the brackets.

Position additional blocks as necessary to accommodate each supply line to be installed.