

5-Year  
Warranty

Proudly Made in  
the U.S.A.



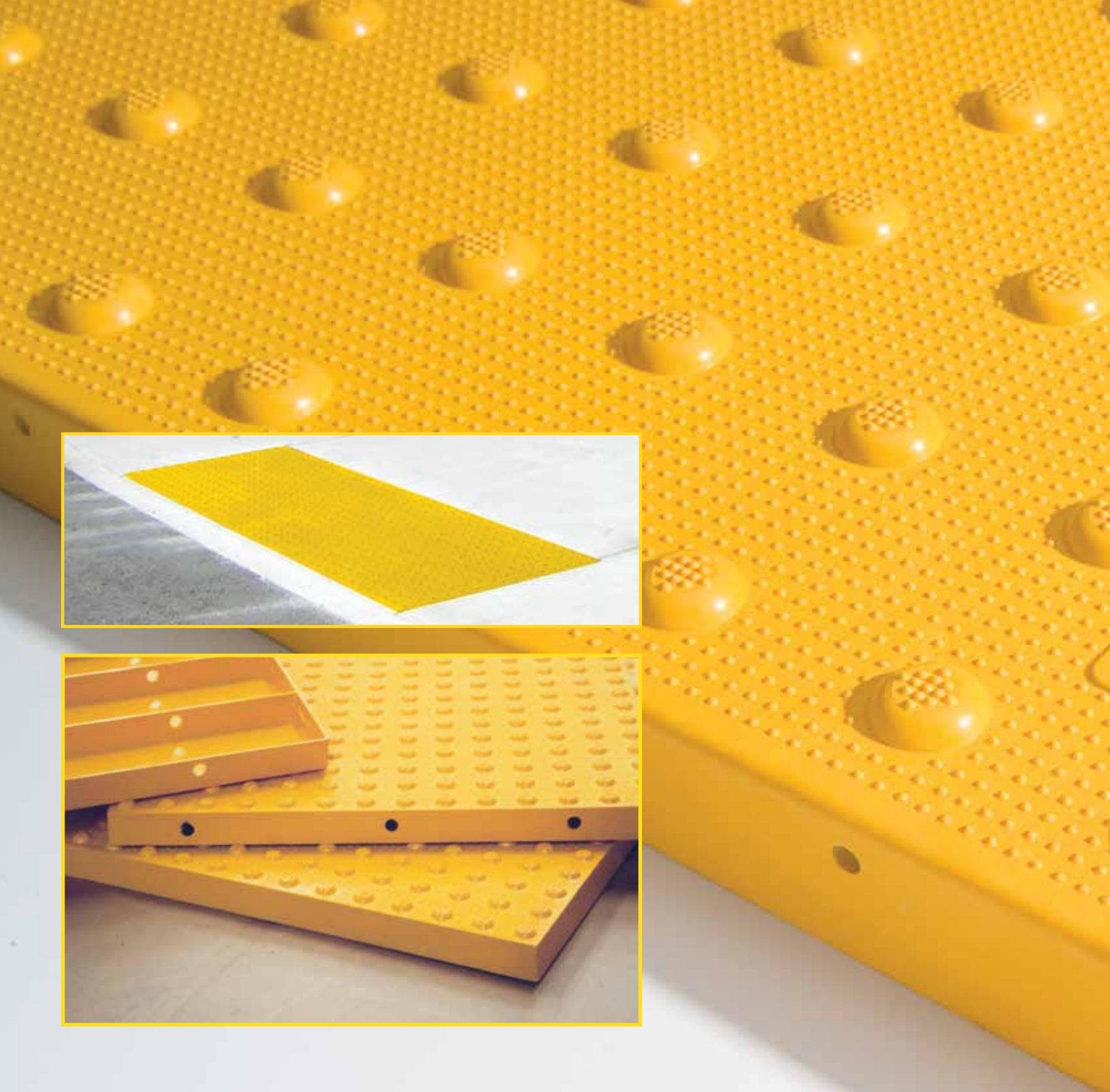
**ADA SOLUTIONS, INC.**  
**DETECTABLE WARNING SURFACES**  
**FOR PEDESTRIAN CROSSINGS**

**CAST-IN-PLACE (WET-SET)**



*Service, Delivery and Price  
Make ADA Solutions, Inc. the Obvious Choice*

WWW.ADATILE.COM • 800-372-0519



# **CAST-IN-PLACE (WET-SET) TACTILE**

**Proudly Made in  
the U.S.A.**



In stock colors

**White**  
37875



**Brick Red**  
20109



**Yellow**  
33538



**Blue**  
15187



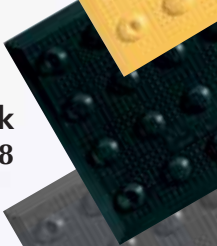
**Safety Red**  
31350



**Seattle Yellow**  
23594



**Black**  
37038



**Dark Gray**  
36081



**Clay Red**  
22144



ADA SOLUTIONS, INC.  
WWW.ADATILE.COM

# CAST-IN-PLACE TACTILE

## Installation Procedure

Be sure to read and understand all of these instructions before you begin.

**A.** The physical characteristics of the concrete shall be as specified in the contract documents while maintaining a slump range of 4-7 to permit the solid placement of the Tactile Unit in the wet cement.

**B.** The concrete shall be poured and finished level, true and smooth to the required dimensions prior to the placement of the Tactile Unit.

**C.** Place the Tactile Unit 6-8 inches from the curb line. Working in a grid pattern, tamp the Tactile Unit into the wet concrete using a rubber mallet and a piece of wood. Continue this process until all of the air has been released, and the Tactile Unit surface is flush with the surrounding area. **IMPORTANT: Avoid striking the surface of the Tactile Unit directly.**

**D.** Following the placement, the Tactile Unit elevation should be checked to the adjacent surface with a straight edge. The Tactile Unit elevation should be consistent with the contract drawings and specifications. Any required adjustments must be made prior to the time when the concrete begins to set.

**E. IMPORTANT NOTICE TO INSTALLER:** To allow for expansion and contraction, after tile is installed, use a 1/4" finish edge trowel around entire perimeter. On a continuous run, be sure to space each unit 1/8" apart.

**F.** When you are confident that the Tactile Unit is in place, and no further adjustments are needed, place a cinder block on both ends to hold the Tactile Unit in place while the concrete sets.

**G.** During and after the Tactile Unit installation, as well as the concrete curing stage, no walking or external forces can be placed on the Tactile Unit. The area must be protected from pedestrian traffic until concrete is cured. The Tactile Warning Surface will be ready for pedestrian traffic within 2-4 hours.

**H.** Be sure to remove plastic protective covering from the face of the Tactile Unit once the concrete is cured.



**PRODUCT SIZES**  
2'x3' 2'x4' 2'x5'  
3'x4' 3'x5'

**APPLICATION**  
Fresh Pour  
Concrete  
Ramps

View additional photos, drawings and specifications on our website:  
[www.adatile.com](http://www.adatile.com). Call (800) 372-0519 with any questions.

# CAST-IN-PLACE TACTILE

## Inline Dome Pattern

### DOME GEOMETRY

*In accordance with ADA Regulations for Detectable Warning on Curb Ramps:* Raised truncated domes with a diameter of nominal 0.9", a height of nominal 0.2", and a center-to-center spacing of 1.67" minimum, and 2.35" maximum.

### PANEL DIMENSIONS

Tactile Units are available in 2'x3', 2'x4', 2'x5', 3'x4' and 3'x5' sizes. Tactile Units may also be custom configured to accommodate specific project requirements. Tactile Units measure 0.25" nominal thickness and feature embedment ribs at 3" on center.

### MATERIAL

A durable exterior grade homogenous glass, carbon, and fiberglass reinforced composite material which is colorfast and UV stable. The color of the Tactile Unit is uniform throughout and does not rely on any type of paint coating to achieve color stability. Standard colors include: Federal Yellow, Seattle Yellow, White, Brick Red, Clay Red, Safety Red, Blue, Dark Gray and Black. For superior wheelchair, walker and shopping cart mobility, truncated domes have a center-to-center (horizontally and vertically) spacing of 2.35 inches.

### INSTALLATION

Tactile Units are to be used on new curb ramp locations. The Tactile Units can be pre-filled with concrete and set in place or pressed into place in the freshly poured concrete.



### PHYSICAL CHARACTERISTICS

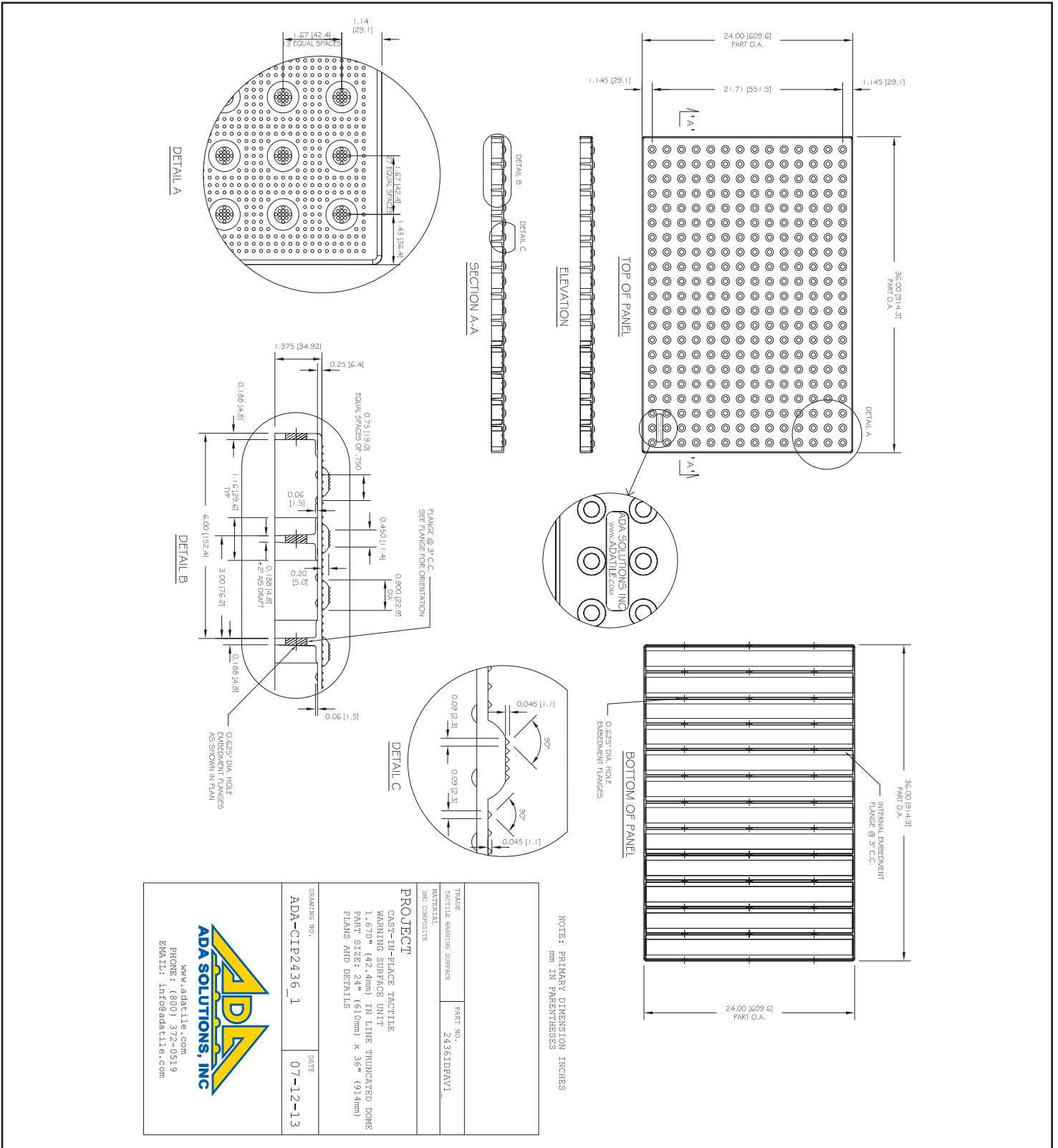
Compressive Strength	28,900 psi	ASTM D 695
Flexural Strength	29,300 psi	ASTM D 790
Water Absorption	.07%	ASTM D 570
Slip Resistance	1.18 Dry, 1.05 Wet	ASTM C 1028
Flame Spread Index	20	ASTM E 84
Salt Spray	No Change (200 hours)	ASTM B 117
Chemical Stain Testing	No Deterioration	ASTM 1308
Abrasion Resistance	549	ASTM C 501
Accelerated Weathering	Delta E<5.0 (2,000 hours)	ASTM G 155
Tensile Strength	11,600 psi	ASTM D 638
Load Bearing at 16,000 lbs.	No Damage	AASHTO-H20
Freeze/Thaw/Heat	No Disintegration	ASTM C 1026



5-Year  
Warranty

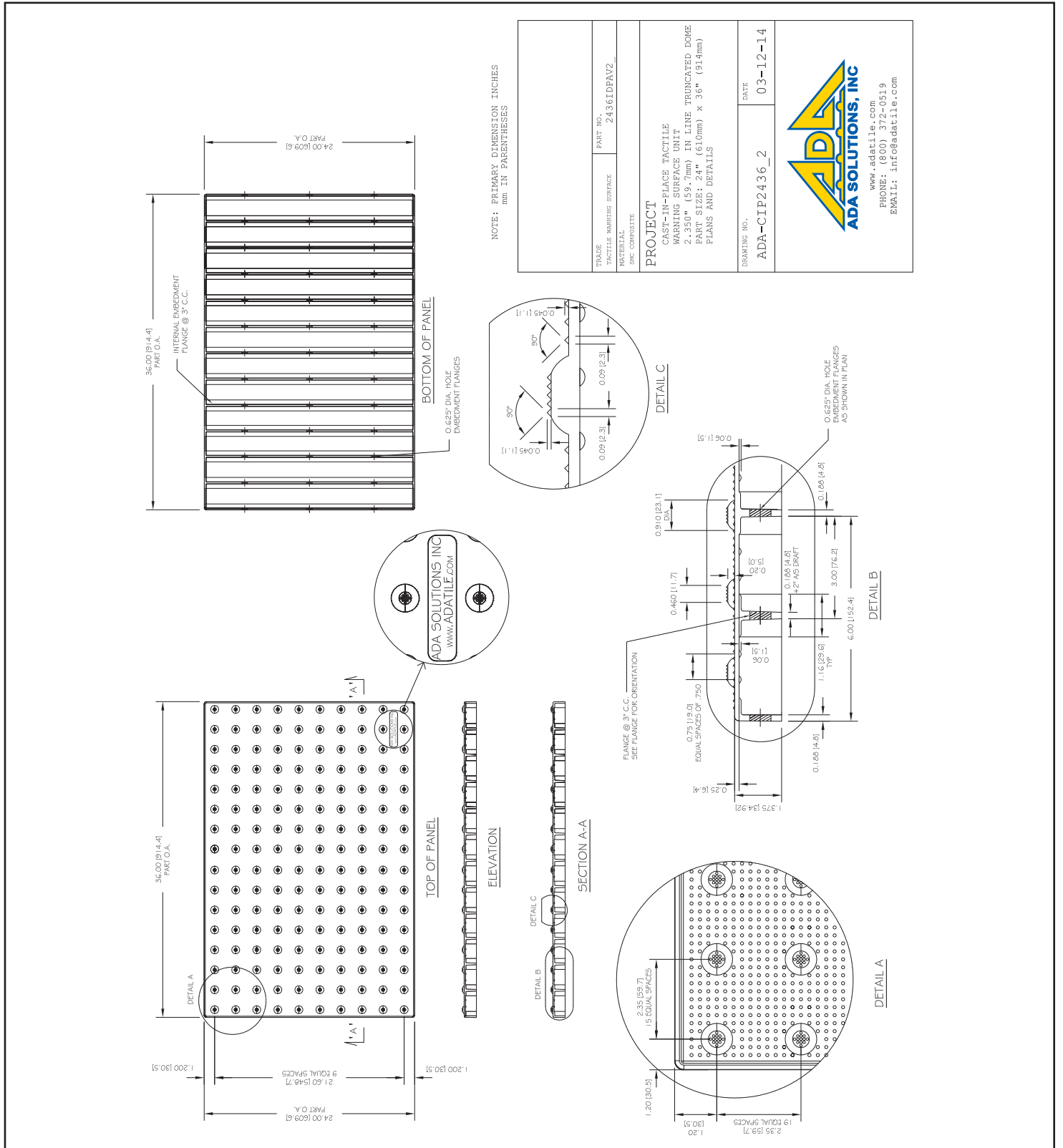
# CAST-IN-PLACE TACTILE

**24"x36" (610 x 914mm) Tile**  
**1.67" (42.4 mm) Dome Spacing**



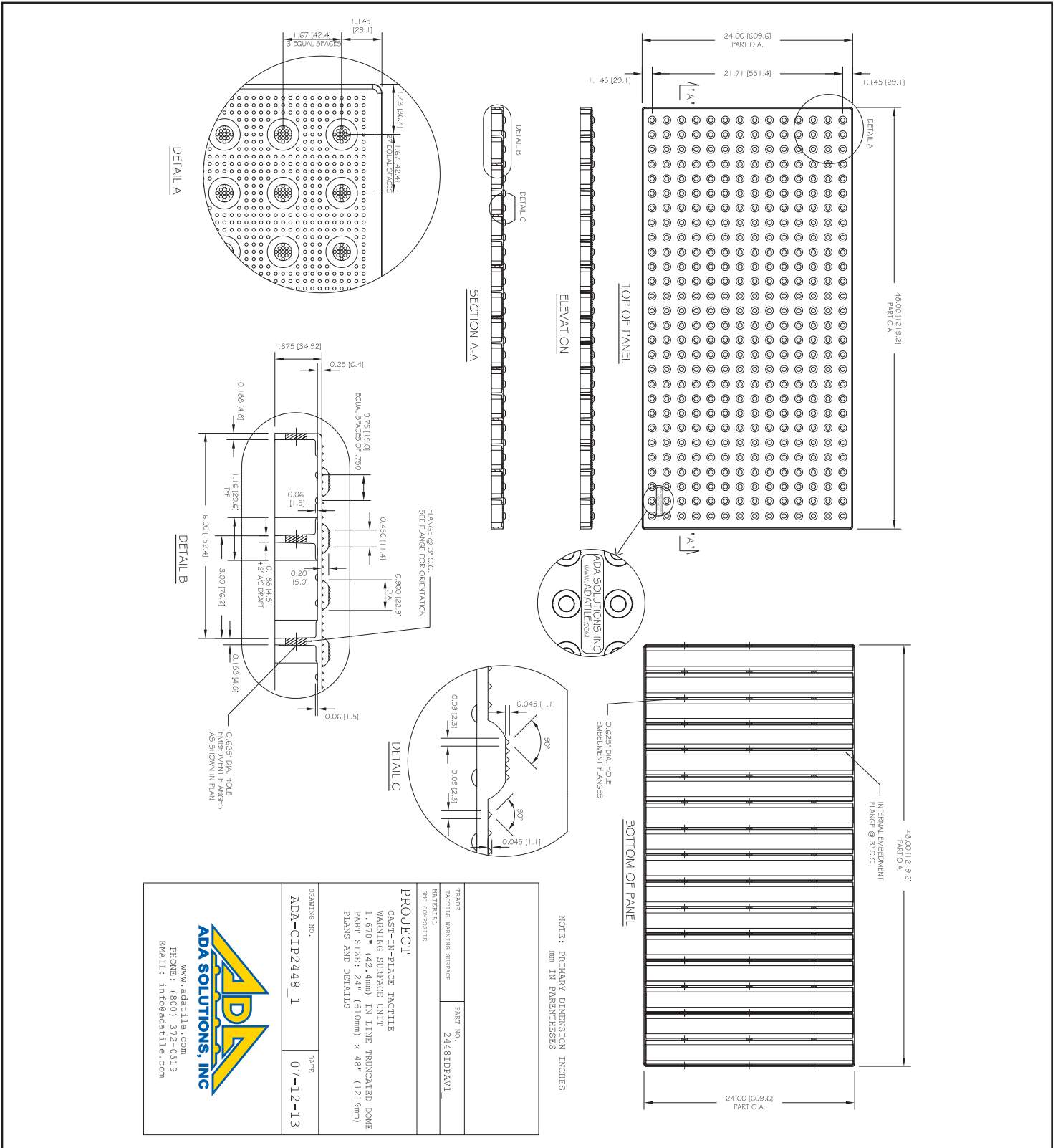
# CAST-IN-PLACE TACTILE

**24"x36" (610 x 914mm) Tile**  
**2.35" (59.7 mm) Dome Spacing**



# CAST-IN-PLACE TACTILE

**24"x48" (610 x 1219mm) Tile**  
**1.67" (42.4 mm) Dome Spacing**









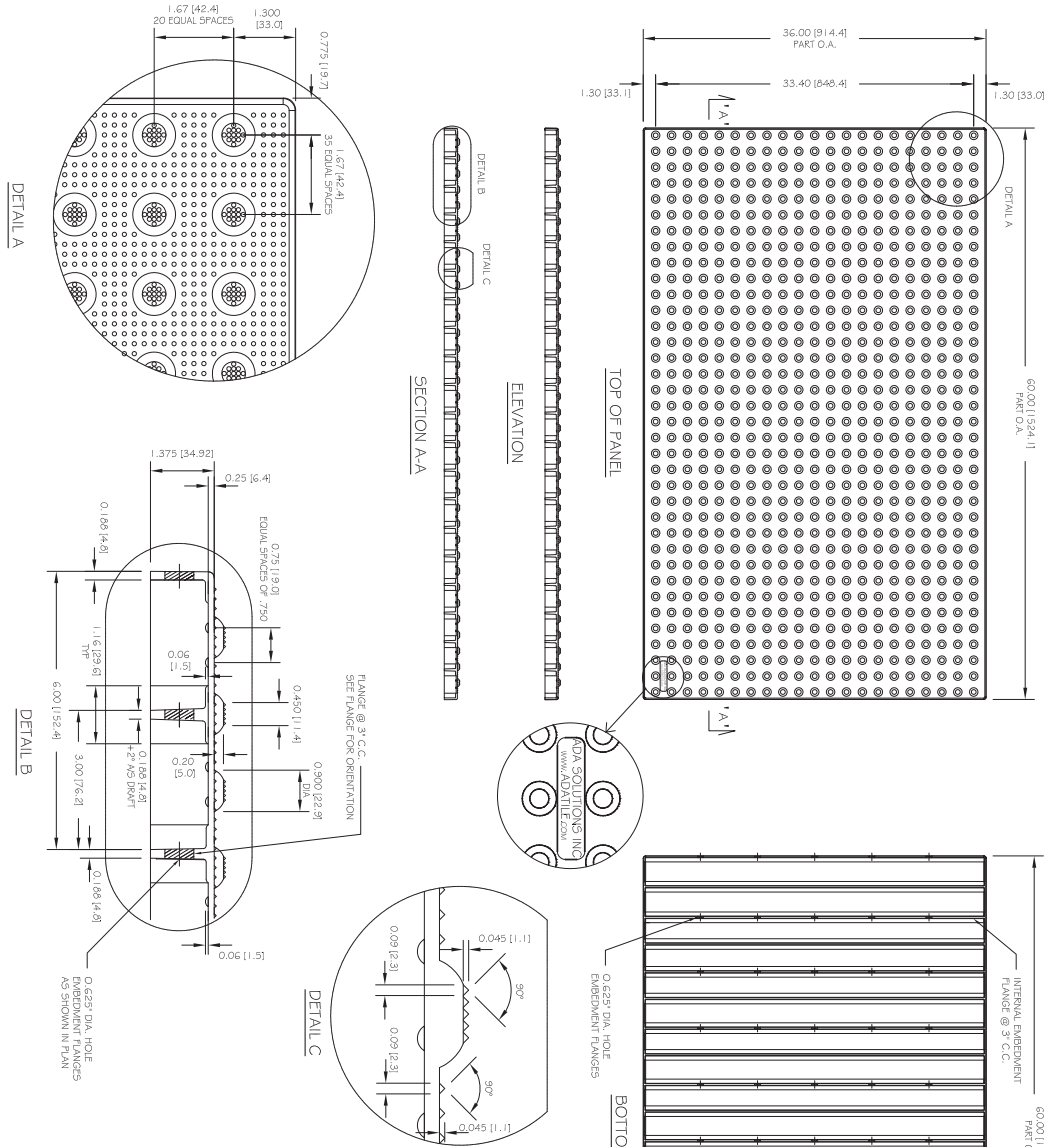






# CAST-IN-PLACE TACTILE

**36"x60" (914 x 1524mm) Tile**  
**1.67" (42.4 mm) Dome Spacing**



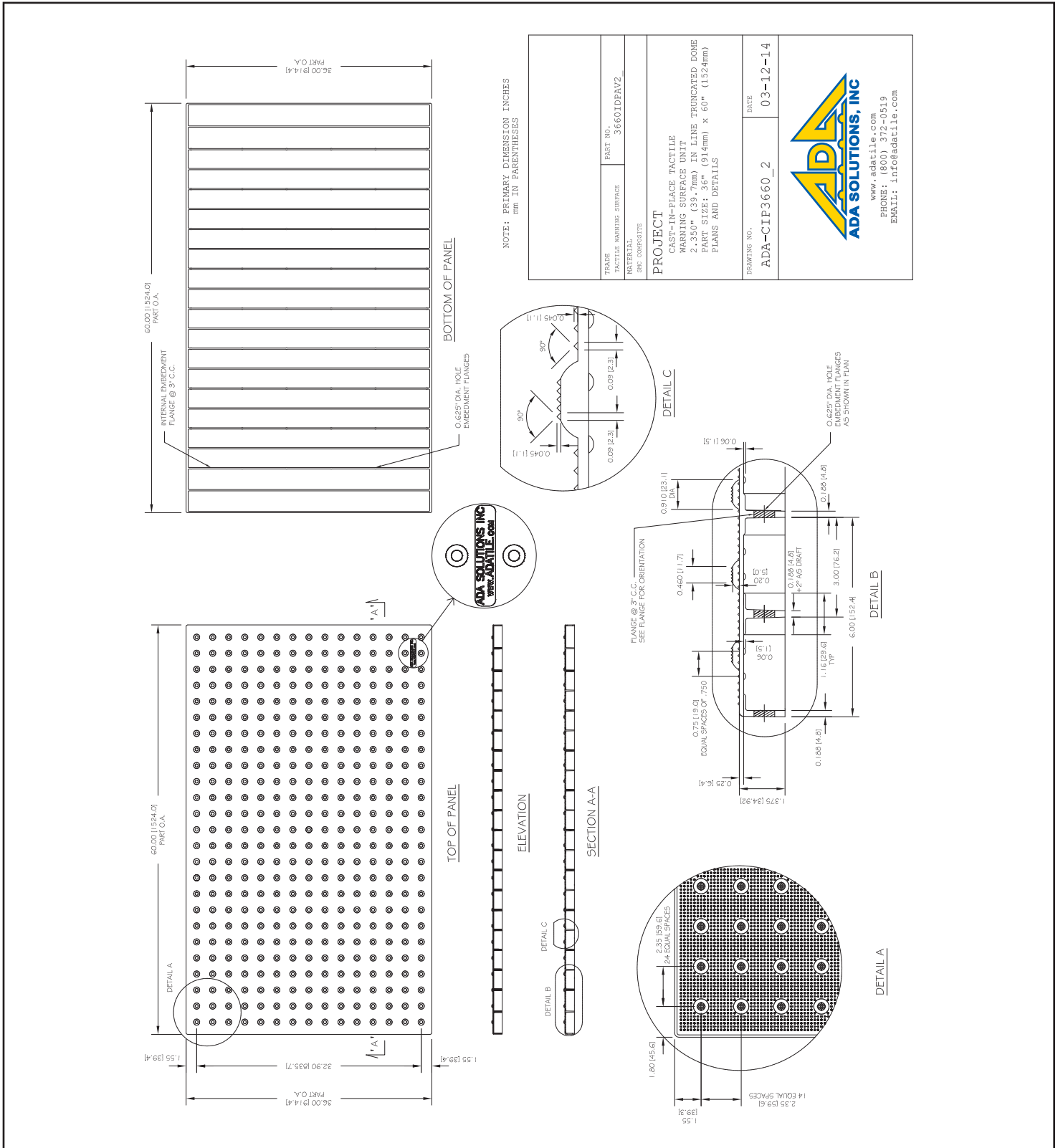
NOTE: PRIMARY DIMENSION INCHES  
 MM IN PARENTHESES

THICK	PART NO.
TACTILE WARNING SURFACE	36601DPAV1
MATERIAL	
SEC COMPOSITE	
<b>PROJECT</b>	
CAST-IN-PLACE TACTILE	
WARNING SURFACE UNIT	
1.670" (42.4mm) IN LINE TRUNCATED DOME	
PART SIZE: 36" (914mm) x 60" (1524mm)	
PLANS AND DETAILS	
DRAWING NO.	DATE
ADA-CIP3660_1	07-12-13



# CAST-IN-PLACE TACTILE

**36"x60" (914 x 1524mm) Tile**  
**2.35" (59.7 mm) Dome Spacing**





Wherever you go...  
There we are™

- INDUSTRY LEADING SERVICE, DELIVERY AND PRICE
- ONE PIECE APPLICATION
- TIME-SAVING INSTALLATION
- CAST-IN-PLACE REPLACEABLE
- RADIUS REPLACEABLE (WET-SET)
- RADIUS SURFACE MOUNT
- SURFACE MOUNT (RETROFIT)
- CAST-IN-PLACE (WET-SET)
- BAR TILE SURFACE MOUNT
- BAR TILE REPLACEABLE (WET-SET)
- GUIDE TILE
- ADAAG COMPLIANT
- UNIFORM COLOR THROUGHOUT

PRODUCT INFORMATION / SUBMITTAL