

SPECIFICATIONS

FIGURE 7865
STRUT ACCESSORIES



ROLLER TROLLEY

FEATURES

- Made in the USA
- Stainless steel ball bearings
- Max load rating of 600 lbs (2.67 kN) with 12 gauge channel
- Based on standard dimensions for channel

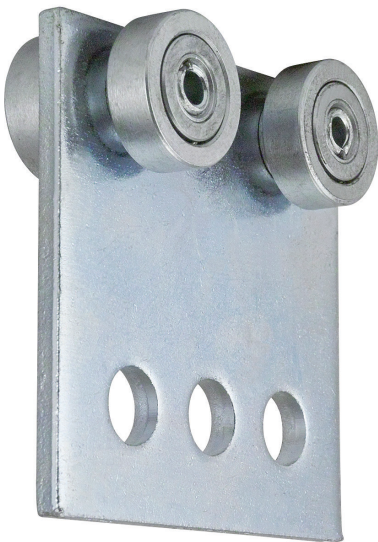
PRODUCT SPECIFICATIONS

Material Specifications and Finishes

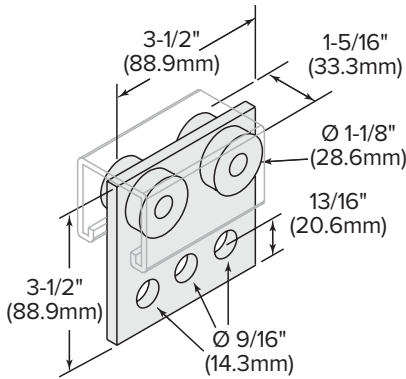
Carbon Steel – ASTM A1011-00 SS GR 33 or ASTM A1011-00CS Type B

Z: Electro-Galvanized (standard finish). Electroplating deposits zinc on the surface of the steel by electrolysis from a bath of zinc salts. Recommended for relatively dry indoor use. This is the standard coating for most FNW products. Thickness of applied zinc is between 0.2 mils to 0.5 mils [5.1 µm to 12.7 µm]. Coatings on FNW Z products meet ASTM B633 SC1 Type III.

S4: 304 Stainless Steel – ASTM A240 (Type 304)



MADE IN THE
USA



Catalog Number	FPM*	RPM**	Design Load in 12 Ga Channel		Weight	
			lbs	kN	lbs	kg
FNW7865Z4	180	600	300	1.33	1.19	0.540
	90	300	450	2.00		
	30	100	600	2.67		

* Feet per minute
** Revolutions per minute