

## SPECIFICATIONS

# FIGURE 7831

## STRUT ACCESSORIES



### METAL END CAP

#### FEATURES

- These unistrut channel end caps are protective metal covers designed to seal the open ends of strut channels, providing a clean and finished look while protecting the channel's interior from moisture, dust and debris.
- Made in the USA

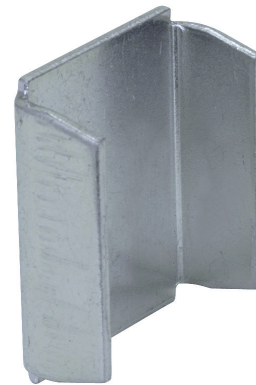
#### PRODUCT SPECIFICATIONS

##### Material

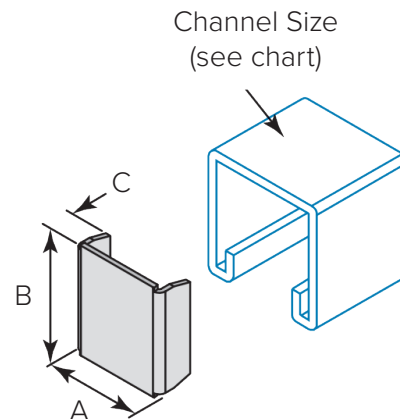
- Carbon steel – ASTM A1011-00 SS GR 33 or ASTM A1011-00CS Type B

##### Finish

- Z – Electro-Galvanized (standard finish). Electroplating deposits zinc on the surface of the steel by electrolysis from a bath of zinc salts. Recommended for relatively dry indoor use. This is the standard coating for most FNW products. Thickness of applied zinc is between 0.2 mils to 0.5 mils [5.1  $\mu\text{m}$  to 12.7  $\mu\text{m}$ ]. Coatings on FNW Z products meet ASTM B633 SC1 Type III.
- S4 – 304 Stainless steel – ASTM A240 (Type 304)
- S6 – 316 Stainless steel – ASTM A240 (Type 316)  
316 Stainless steel nuts – ASTM A276-03



MADE IN THE  
**USA**



#### REFERENCE CHART

Catalog Number	Channel Size	Gauge	A		B		C		Weight	
			in.	mm	in.	mm	in.	mm	lbs	kg
FNW7831Z0162	1-5/8" x 1-5/8"	12	1.38	35	1.62	41	0.56	14	0.08	0.036
FNW7831Z140162	1-5/8" x 1-5/8"	14	1.46	37	1.62	41	0.53	13	0.04	0.018
FNW7833Z0081	1-5/8" x 13/16"	14	1.38	35	1.38	35	0.59	15	0.05	0.023