

ECLIPSE #9800 AUTOMATIC FLUSHING STATION

COLD CLIMATE STATION - DISCHARGES BELOW GRADE

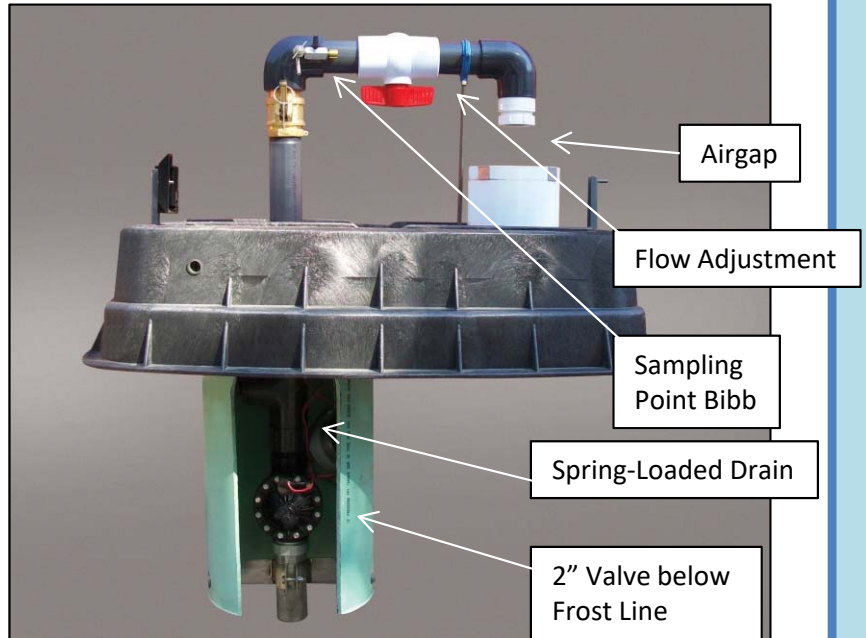
Patented

ECLIPSE™

Digital Controller
Allows up to 12
Flushing Cycles
per day, up to 6
hours per cycle.
Operates on two
9-volt batteries



UV Resistant, Lockable Enclosure



FEATURES

- Permanent station, 2" MIP
- Self-draining, non-freezing
- Up to 200 gpm adjustable flow
- Discharges below grade (storm, sanitary sewer or French Drain)
- Controller operates on 9-volt battery
- UV resistant lockable enclosure
- Dechlorination options available



2511 North 9th Street | St. Louis, MO 63102
800-231-3990 | 314-231-8738 (fax)
www.hydrants.com | info@hydrants.com

See Product Video at:
www.hydrants.com

Easy to Service



Remove 2 bolts in access plate



Pull up on inner piping



Entire valve assembly slides out!



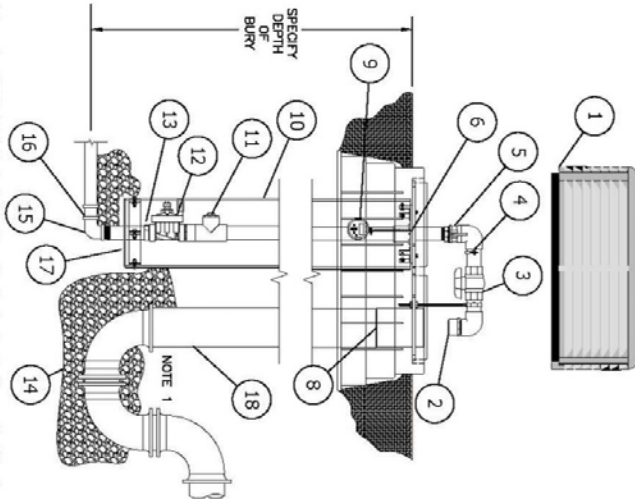
To access controller, flip thumb clips and remove small plate



Pull controller up and out of chamber

#9800 AUTOMATIC FLUSHING DEVICE

Flushing device shall be installed in the following locations:



ITEM	ITEM / DESCRIPTION	OPTIONAL BY OTHERS
1	UV RESISTANT LOCKABLE UD	
2	DIFFUSER / TRAP	
3	2" PVC BALL VALVE	
4	SAMPLING POINT	
5	2" STAINLESS STEEL QUICK DISCONNECT	
6	REMOVABLE ACCESS PLATE	X
7	DETRITOR BASKET	
8	SEWER PIPE CONNECTION	
9	CONTROLLER	
10	SDR 35 PVC PIPE	
11	AUTOMATIC DRAIN	
12	2" AUTOMATIC VALVE	X
13	O-RING CONNECTOR	X
14	1" CLEAN ROCK	X
15	2" S.S. FIP INLET	X
16	2" MP x COMPRESSION ADAPTER	X
17	DEBRIS PLATE	X
18	6" PVC SEWER PIPE & P TRAP	X
19	SCHEDULE 80 PVC PIPE	X

LAYOUT NOTES:

- 1.) KUPFERLE RECOMMENDS THE INSTALLATION OF A 6" DWV P TRAP

Automatic flushing device shall have a 2" stainless steel FIP inlet that will lead vertically to the bottom of a 2" automatic flushing valve. The flushing valve shall control the flow of water through the hydrant and its diaphragm with the extension and retraction of a DC latching solenoid and have a 150 PSI rating. Each unit shall be furnished with a stand-alone valve controller. The valve controller will not require a second hand-held device for programming. Controller must have minimum of 12 possible flushing cycles per day. Controller shall be submersible to 12 feet, operate with a 9 volt battery, and have resist-sealed electrical components. The solenoid shall have no loose parts when removed from the valve. Each unit shall have a all stainless steel sampling point. Removal of the 2" valve shall be possible via an o-ring connector located beneath the valve after the above ground disconnection of the stainless steel access plate. Valve assembly shall be housed in a PVC enclosure and each unit shall be self-draining, non-freezing. All above-ground components shall be contained within a UV-Resistant locking cover.

Unit model # shall be 9800 as manufactured by Kupferle Foundry Company, St. Louis MO (1-800-231-3990), or approved equal.

NOTE: Flush water lines free of debris before installation

DD/MM/YY	ISSUED FOR REFERENCE
DATE	STATUS / REVISION

SHEET 1 OF 1	SCALE: 1/2"=1'	DRAWN	INITIALS	DATE
9800 SPEC SHEET		APPROVED	SMS	06/20/17
		MODIFIED	DCL	09/30/17

2511 NORTH 9TH STREET
ST. LOUIS, MO 63102
1-800-231-3990
FAX 314-231-2820
www.hydrants.com

KUPFERLE
Since 1857

2511 North 9th Street
St. Louis, MO 63102
800-231-3990
314-231-8738 (fax)
www.hydrants.com |
info@hydrants.com

Certified to ANSI/NSF 372

UNITED STATES • ACG
ENVIRONMENTAL PROTECTION AGENCY

Approved GPR Program

Distributed by: