



Z5850

Custodial Floor Sink

TAG _____

Architectural/Engineering Specification:

28" x 28" enameled cast iron corner floor sink. Provided with grid drain (specify outlet size).

Product Features:

- 28" [711 mm] x 28" [711 mm]
- Enameled cast iron
- Corner floor service sink
- 8" high front curb
- Large, flat bottom with fluted channels for fast drainage
- Integral tiling bead
- Shipping Weight: 210 lbs.

Compliance and Certification:

- ASME A112.19.1/ CSA B45.2



Recommended Trim:

- Z843M1 8" service sink faucet

Option:

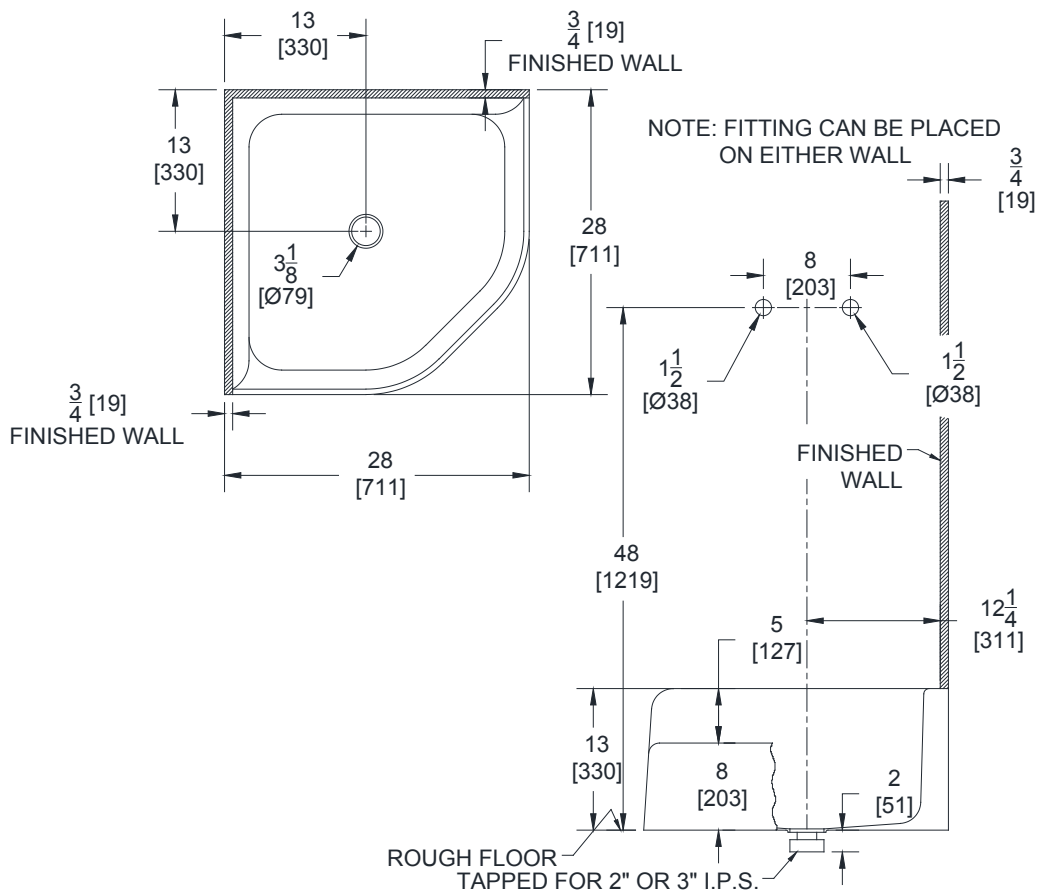
- D2 Drain with 2" IPS connection
- D3 Drain with 3" IPS connection
- RG Removable vinyl-coated rim guard

Architectural/Engineering Approval

Fixture dimensions meet ASME A112.19.1 / CSA B45.2 requirements.

The information contained in this document is subject to change without notice.
Please contact Zurn for most up to date information.

Rough-in dimensions/Overview dimensions



Fixture dimensions meet ASME A112.19.1 / CSA B45.2 requirements.