



Z5460-AM

28" x 22" Surgeon Sink

TAG _____



Z5460 Series Shown Above

Recommended Trim:

- ☐ **Z8739-SW-PC** Wide Top Sink Strainer
- ☐ **Z8702** Series P-Trap
- ☐ **Z8800** Series Stop with Flexible Supplies

Optional Trim:

- ☐ **Z85500-WM** Wall-Mounted Double Foot Pedal Valve
- ☐ **Z821CO-FC** Single Hole, 8" Gooseneck Spout with Laminar Flow Control for use with Foot Pedal Valve (use with Z5461)
- ☐ **Z831C4** 8" Widespread Faucet with 8" Gooseneck Spout (use Suffix-TW for use with foot pedal valve)

These dimensions and specifications are subject to change without notice.

Fixture dimensions meet ANSI/ASME standard A112.19.2 and CAN/CSA B45 requirements.

Z5460 Series

- 28" [711 mm] x 22" [559 mm]
- Vitreous china
- Antimicrobial ceramic glaze to create a permanent surface that inhibits the growth of stain and odor causing mold, mildew and bacteria, thus minimizing the need for cleaning and water to cleanse the bowl.
- Low front rim
- Glazed underside
- Concealed wall hangers and support brackets
- Faucets holes for single or 8" centers
- Shipping Weight: 83 lbs.

Engineering Specification:

- ☐ **Z5461-AM** 28" x 22" vitreous china surgeon sink with antimicrobial ceramic glaze. Provided with wall hangers, support brackets, and single faucet hole.
- ☐ **Z5468-AM** 28" x 22" vitreous china surgeon sink with antimicrobial ceramic glaze. Provided with wall hangers, support brackets, and 8" center faucet holes.

This space is for Architectural/Engineering Approval

See Zurn One Systems for suggested packages.

ZURN INDUSTRIES, LLC. ♦ COMMERCIAL BRASS OPERATION ♦ 5900 ELWIN BUCHANAN DRIVE ♦ SANFORD NC 27330

Phone: 1-800-997-3876 ♦ Fax: 919-775-3541 ♦ World Wide Web: www.zurn.com

In Canada: ZURN INDUSTRIES LIMITED ♦ 7900 Goreway Drive Unit 10 ♦ Brampton, Ontario L6T5W6 ♦ Phone: 905-405-8272 Fax: 905-405-1292

Rev. A
Dwg. No. 311207

Date: 4/18/2017
Product No. Z5460-AM



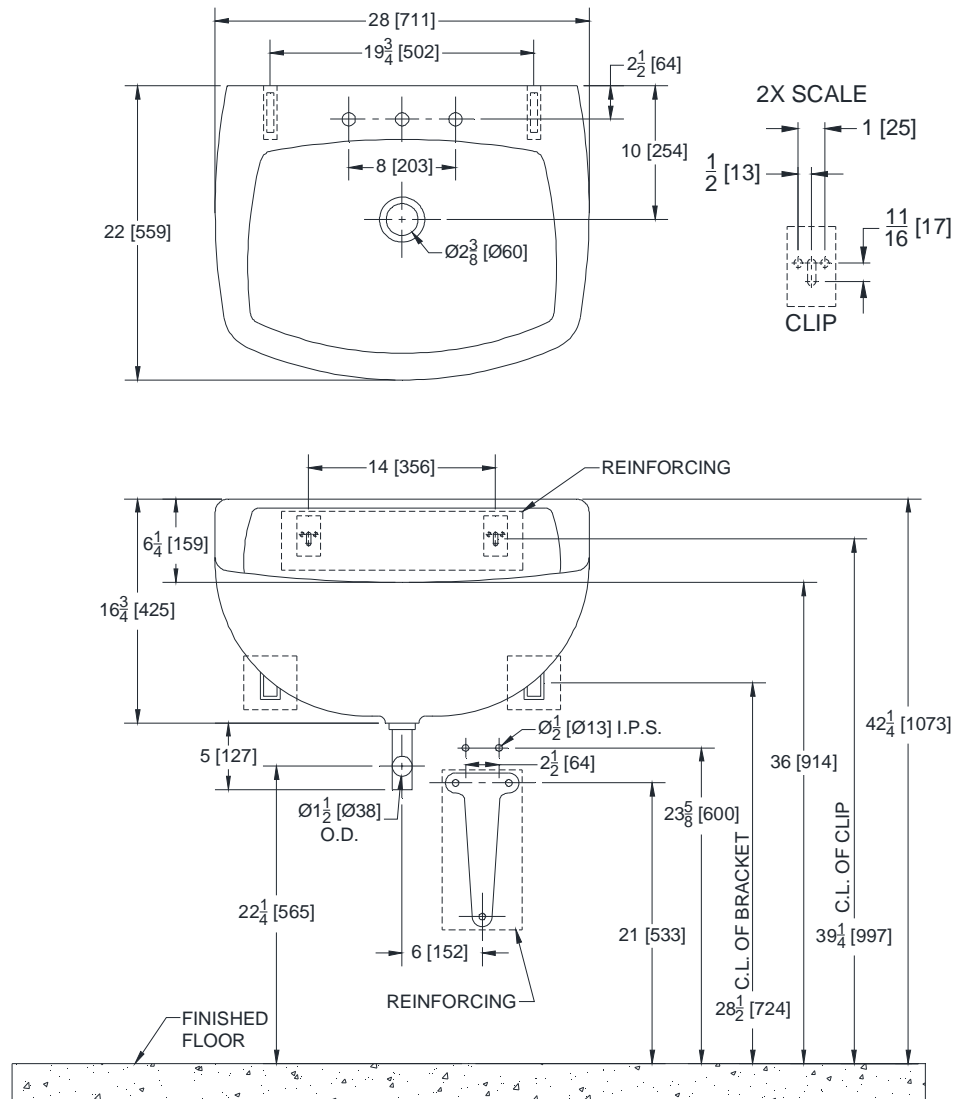
Z5460-AM

28" x 22" Surgeon Sink

TAG _____

Rough-in dimensions for Z5460 Series

- Z5461-AM Surgeon Sink with single faucet hole
- Z5468-AM Surgeon Sink with 8" center faucet holes



Note: For use with Z1224-2 carrier

These dimensions and specifications are subject to change without notice.

Fixture dimensions meet ANSI/ASME standard A112.19.2 and CAN/CSA B45 requirements.

ZURN INDUSTRIES, LLC. ♦ COMMERCIAL BRASS OPERATION ♦ 5900 ELWIN BUCHANAN DRIVE ♦ SANFORD NC 27330

Phone: 1-800-997-3876 ♦ Fax: 919-775-3541 ♦ World Wide Web: www.zurn.com

In Canada: ZURN INDUSTRIES LIMITED ♦ 7900 Goreway Drive Unit 10 ♦ Brampton, Ontario L6T5W6 ♦ Phone: 905-405-8272 Fax: 905-405-1292

Rev. A
Dwg. No. 311207

Date: 4/18/2017
Product No. Z5460-AM