

# **SPEAKMAN COMPANY**

## **SE-577-SD Installation, Maintenance & Operation Instructions**

### **EYESAVER® EYEWASH**

#### **DESCRIPTION**

Wall mounted emergency eyewash. Supplied with stay-open full flow valve; activated by pulling arms down.

#### **SPECIFICATIONS**

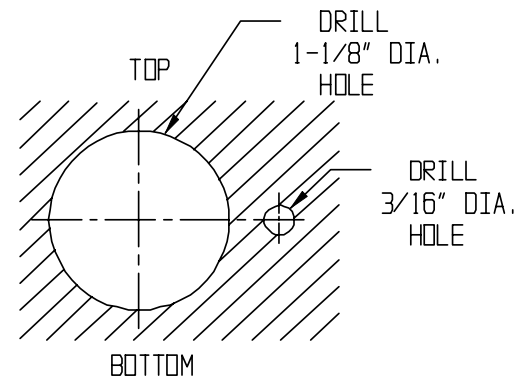
SPRAY HEADS: (2) Brass, Chrome-Plated, Aerated.  
 VALVE: Brass, Chrome-Plated.  
 ACTIVATOR: Pull Down Arms.  
 INLET: 1/2" NPT Female.  
 SHIPPING WEIGHT: 5 lb.  
 EMERGENCY SIGN: 7-7/8" x 7-7/8" Plastic Wall Sign.

#### **OPTIONS**

◇ AL2 (Electrical Alarm)	◇ SGN4 (Eye Wash Floor Sign)
◇ AL3 (Electrical Alarm)	◇ VPL (Vapor Proof Light)
◇ AL2-C1D2 (Electrical Alarm / Haz. Area)	◇
◇ AL3-C1D2 (Electrical Alarm / Haz. Area)	◇
◇ FLW (Flow Switch)	◇

#### **INSTALLATION**

Review drawing to assure proper installation. At desired location, drill a 1-1/8" diameter hole (1-1/2" thick max.). Be sure the hole is drilled as straight as possible. Drill a second 3/16" dia. alignment hole 7/8" from the center of the other hole. Attach eyewash using supplied hardware, and connect a water supply to unit that is a 1/2" minimum uninterrupted source of potable water (use pipe sealant on connection). Failure to use potable water can result in emergency units producing impure or contaminated water causing possible further injury.



#### **OPERATION**

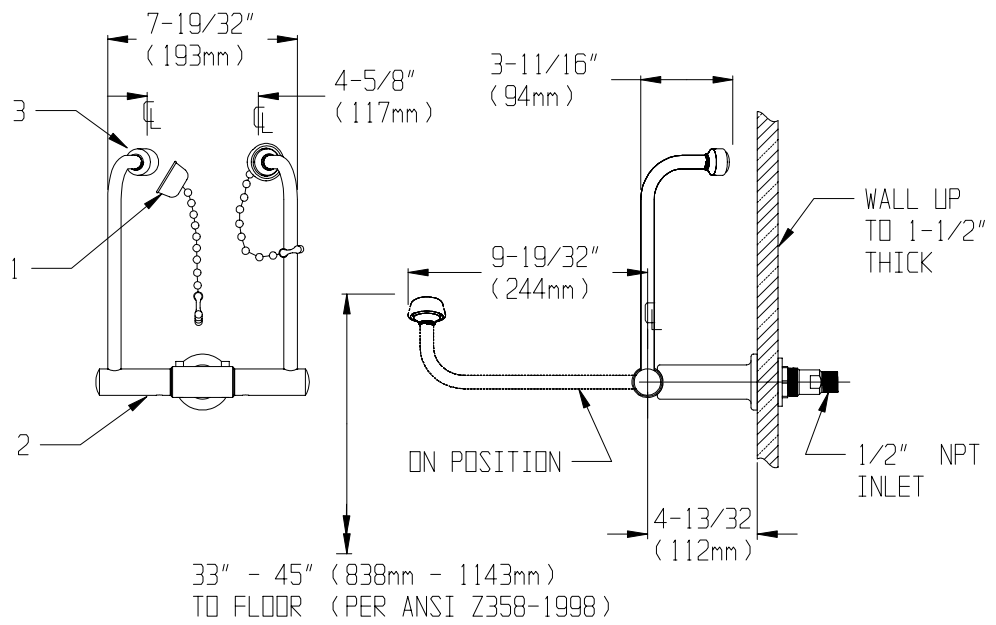
The eyewash is activated by pulling the arms down 90°. Once the unit is activated, water will discharge from the spray outlets until the arms are manually pushed back to the off position.

#### **TESTING PROGRAM**

The American National Standards Institute (ANSI) states that all safety emergency equipment shall be activated on a weekly basis to flush the line and verify proper operation. Speakman Company furnishes a testing record tag (91-0635) with each unit. On this tag the date of inspection and the inspectors initials should be noted.

**MAINTENANCE**

The valve and the eyewash are the only portion of the unit that may require maintenance. Should you need parts to repair this unit. Please reference the parts listing below for correct part numbers. Before any maintenance is done be sure to shut the water supply off.



**WARNING: Use only genuine Speakman parts when repairing or replacing components. To order parts call 1-800-537-2107.**

**SE-577-SD REPLACEMENT/REPAIR PARTS**

<u>ITEM</u>	<u>PART/GROUP #</u>	<u>DESCRIPTION</u>
1	G05-0679-MO	(2) Dust Cap Assy.
2	G20-1894-RCP	Wall Mounted Eyewash with Swingdown Arms
3	05-1177-PC	(2) Aerator Assy.

\* FOR REPLACEMENT OF INTERNAL O-RINGS AND SCREWS ORDER REPAIR PART RPG05-0673.

**FLOW DATA**

EYEWASH:

FLOW PRESSURE	PSI (BAR)	30 (2.07)
FLOW RATE	GPM (LPM)	3.1 (11.4)

NOTE: This unit should be connected to an uninterrupted source of potable water, with a minimum flowing pressure of 30 PSI and a maximum static pressure of 125 PSI.

**SPEAKMAN COMPANY**  
 400 Anchor Mill Road, New Castle, DE 19720 USA  
 1-800-537-2107, Fax: 1-800-977-2747

Note: All units meet existing ANSI Z358.1 1998 Standards and OSHA Rules. Product improvements may cause specification and dimensional changes without notice.