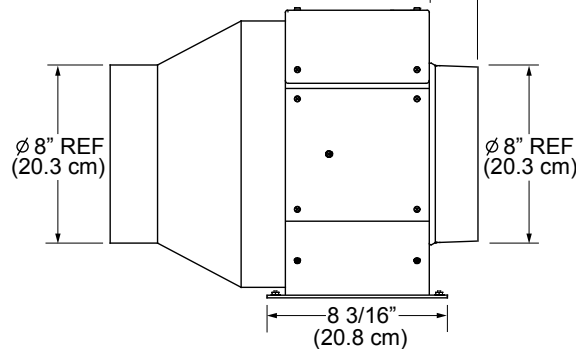
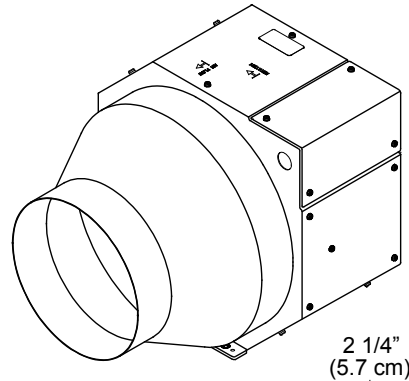
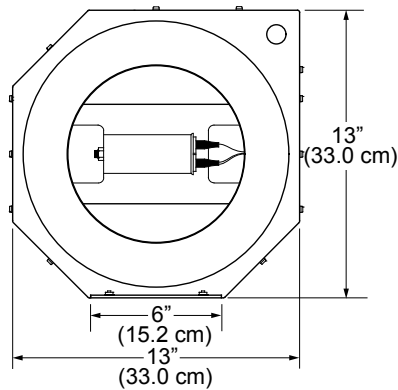
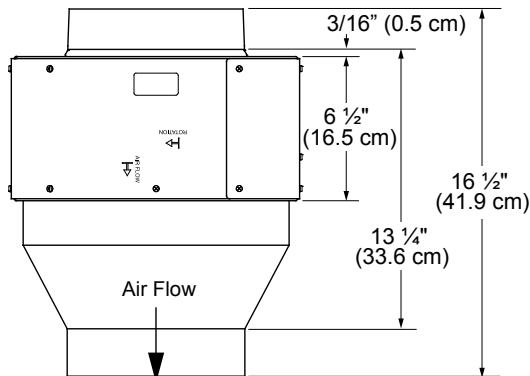




Inline High-Speed Fan

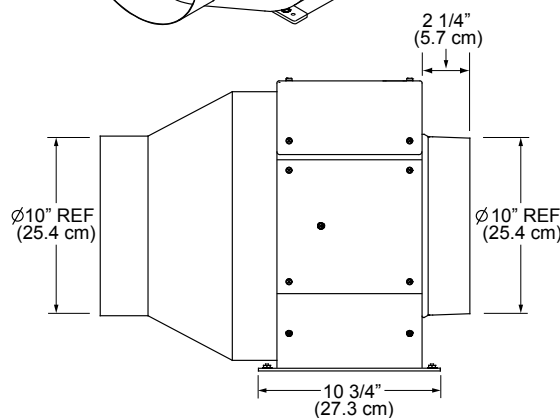
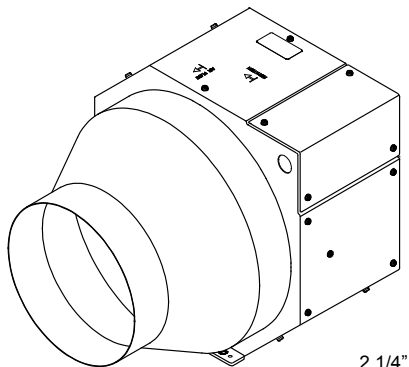
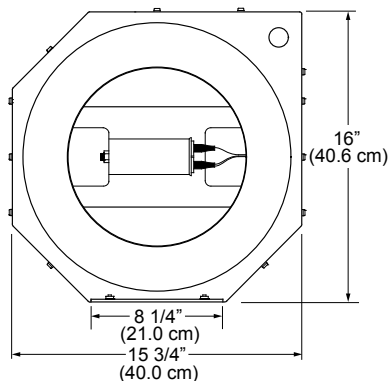
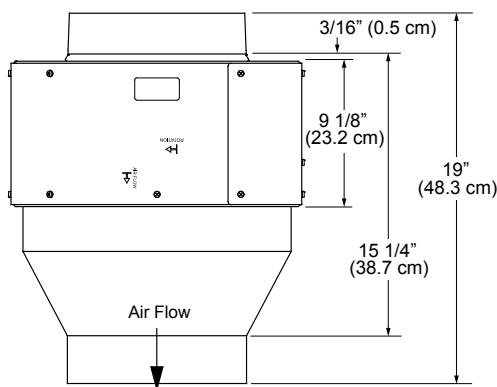
PLANNING GUIDE



WARNING

- Observe all local ordinances during planning and installation. Contact your local building department for details.
- DO NOT install an additional inline or external blower to increase the length of the duct run. Even small differences in blower airflow rates can greatly reduce the air draw of the hood.

ILHSF8 Overall Dimensions



ILHSF10 Overall Dimensions



Inline High-Speed Fan

PLANNING GUIDE

Model	Power Requirements*	Blower Rating**
ILHSF8	120 Vac, 60 Hz., 3.5 Amp.	600 CFM Nom.; 620.7 CFM Actual
ILHSF10	120 Vac, 60 Hz., 4.5 Amp.	1100 CFM Nom.; 1115.9 CFM Actual

* In addition to hood/vent system; ** Actual at 0 inches static pressure
These specifications are for reference only. See the blower data label for exact spec's. If the above spec's differ from those on the data label, use the label data.

WARNING

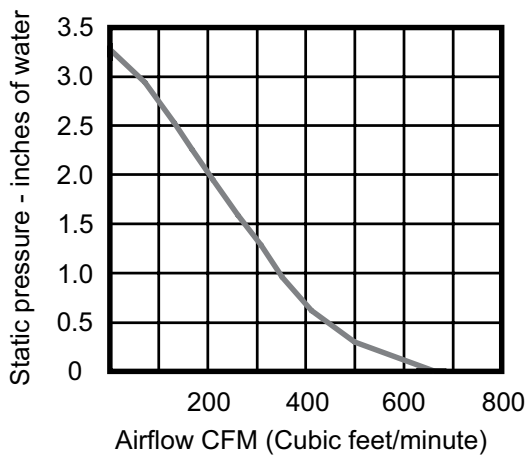
To avoid the risk of fire due to fan overheat, do not install:

- this blower with a hood/vent system that has an internal blower.
- more than one blower to increase the length of the duct run. Even small differences between blower airflow rates can greatly hinder the vent system's ability to draw air.

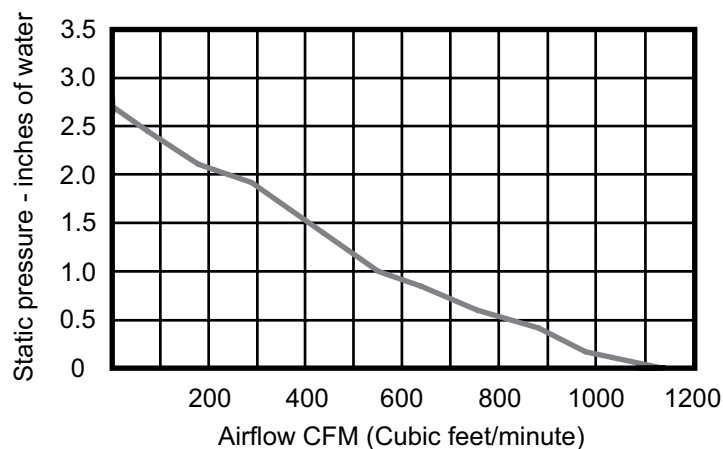
NOTES:

- Install this blower only with approved Dacor hoods and downdraft vent systems. See the hood/vent installation instructions to determine suitability.
- All models are thermally protected.

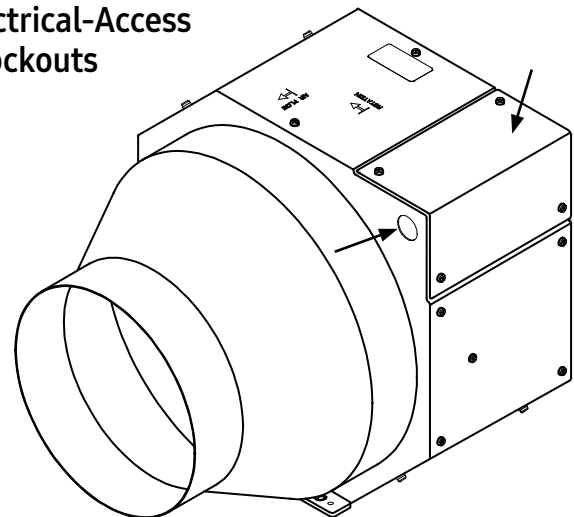
ILHSF8 Blower Performance



ILHSF10 Blower Performance



Electrical-Access Knockouts



Fan Weight	
Model	Weight
ILHSF8	22 lbs (10 kg)
ILHSF10	21 lbs (14 kg)