

Load Hugger® Cargo Control

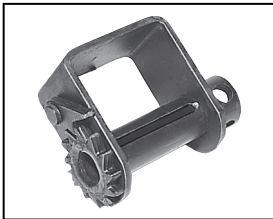
WINCH STRAPS & WINCHES

Series 12,000 Load Huggers

3" & 4" Wide Polyester Winch Assemblies

- Load Hugger Winch Straps are made for securely mounted winches on flat bed trucks and trailers.
- Ultimate strength 15,000 lbs.
- Working load limit 5,000 lbs.
- Standard assemblies in 3" or 4" widths and 27' or 30' lengths.
- Wear pads and corner protectors extend life of Load Huggers.
- To order non-standards - specify width, length, and end fitting.

Winches must be properly installed with ratchet pawl on top of toothed wheel to help prevent accidental disengagement.



Standard Winch #61222

For 3" & 4" Load Hugger Winch Straps
7.8-lbs.



Portable Winch #61221

For 3" & 4" Load Hugger Winch Straps
8.8-lbs.



36" Winch Bar #61223

For use with both 61221 and 61222 above
4.8-lbs.



EZ Winch Handle #61230

For use with both 61221 and 61222 above
1.2-lbs.



EZ Spool #61231

For use with both 61221 and 61222 above
2.5-lbs.

Web Width (in.)	Assembly Length (ft.)	Standard Part No.	Tuff-Edge Part No.	Assembly Weight (lbs.)
-----------------	-----------------------	-------------------	--------------------	------------------------



Flat Hook

4	27	61201	TE61201	4.0
4	30	61202	TE61202	4.6
3	27	61203	TE61203	4.4
3	30	61204	TE61204	4.8



Forged Triangle

4	27	61205	TE61205	4.4
4	30	61206	TE61206	5.0
3	27	61207	TE61207	4.8
3	30	61208	TE61208	5.2



Grab Hook

4	27	61209	TE61209	4.2
4	30	61210	TE61210	4.8
3	27	61211	TE61211	4.6
3	30	61212	TE61212	5.0



Chain Anchor

4	27	61213	TE61213	6.0
4	30	61214	TE61214	6.6
3	27	61215	TE61215	6.4
3	30	61216	TE61216	6.8



7" Sewn Eye

4	27	61217	TE61217	3.0
4	30	61218	TE61218	3.6
3	27	61219	TE61219	3.4
3	30	61220	TE61220	3.8



U-Hook

4	27	61225	TE61225	4.2
4	30	61226	TE61226	4.8
3	27	61227	TE61227	4.6
3	30	61228	TE61228	5.0