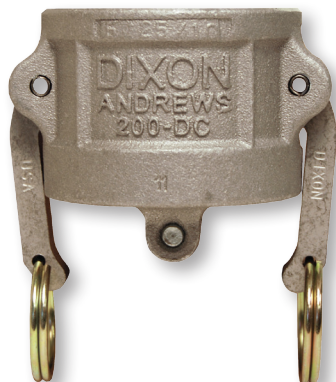


## Dixon® Type DC Dust Caps

### Features:

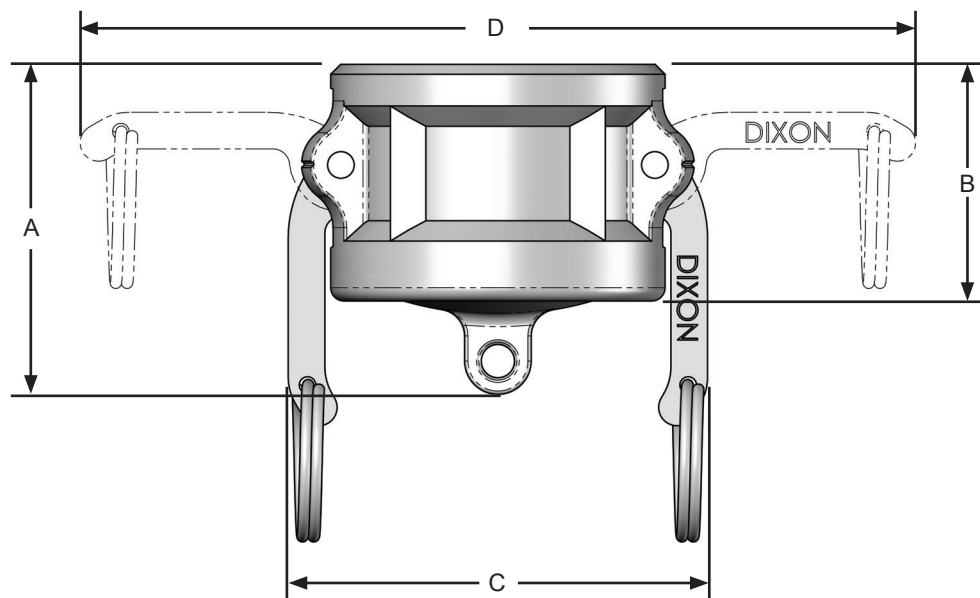
- Finger rings are not supplied on ½" - 1" Dixon® couplings.
- ½" Dixon® has only one cam arm.
- Couplers are supplied standard with a Buna-N gasket. Other gasket types are available on pages 65-67.



Size	356T6 Aluminum Part #	Aluminum Hard Coat Part #	Brass Part #	Unplated Malleable Iron Part #	316 Stainless Steel Part #
½"	50-DC-AL	---	50-DC-BR	---	50-DC-SS
¾"	75-DC-AL	---	75-DC-BR	---	75-DC-SS
1"	100-DC-AL	---	100-DC-BR	---	100-DC-SS
1½"	150-DC-AL	150-DC-ALH	150-DC-BR	---	150-DC-SS
2"	200-DC-AL	200-DC-ALH	200-DC-BR	200-DC-MI	200-DC-SS
2½"	250-DC-AL	---	---	---	250-DC-SS
3"	300-DC-AL	300-DC-ALH	300-DC-BR	300-DC-MI	300-DC-SS
4"	400-DC-AL	400-DC-ALH	400-DC-BR	400-DC-MI	400-DC-SS
5"	500-DC-AL	---	500-DC-BR	---	500-DC-SS
6"	600-DC-AL	600-DC-ALH	---	---	600-DC-SS
8"	800-DC-AL <sup>1</sup>	---	---	---	---

<sup>1</sup> Dixon® and Boss-Lock™ cam and groove couplings *do not interchange in the 8" and ½" sizes.*

The 8" Dixon dust cap has 2 cam arms.



### 356T6 aluminum, brass and iron dimensions

Size	½"	¾"	1"	1½"	2"	2½"	3"	4"	5"	6"	8"
A overall length	1-25/32	2-1/32	2-11/32	2-11/16	3	2⅞	3⅞	3-21/32	3½	3-3/16	5-7/16
B coupler length	1-7/32	1-11/32	1-21/32	1-13/16	2-7/32	2-3/16	2¼	2-5/16	2-5/16	2⅞	3-13/16
C distance across safety lugs	1-17/32	2⅞	2-7/16	3-9/16	3-15/16	4-7/16	5-15/32	6-9/16	7-9/16	10-3/32	12-1/32
D distance across open cam arms	2-11/16	4⅞	5-3/16	7-7/16	7-13/16	8-11/32	10-3/32	11-3/16	12-3/16	16¼	19-31/32

### 316 stainless steel dimensions

Size	½"	¾"	1"	1½"	2"	2½"	3"	4"	5"	6"	8"
A overall length	1-23/32	1¼	2-3/16	2-13/16	3-3/32	3-1/16	3⅞	3-17/32	3⅞	3¾	---
B coupler length	1-7/32	1¼	1-9/16	1-29/32	2-7/32	2¼	2-9/32	2-9/32	2-7/16	2-19/32	---
C distance across closed cam arms	1-17/32	2⅞	2-7/16	3-9/16	3-15/16	4-7/16	5-15/32	6-9/16	7-9/16	10-3/32	---
D distance across open cam arms	2⅞	4⅞	5-3/16	7-7/16	7-13/16	8-11/32	9-15/16	11-1/32	12-3/16	16¼	---

## Dixon® Type DC Dust Caps

Cam &amp; Groove



356T6 aluminum



aluminum hard coat



brass



unplated malleable iron



316 stainless steel

## Features:

- Buna-N gasket supplied standard, other gaskets available on pages 167 - 170.
- ½" Dixon® has only one cam arm.
- Pull rings are not supplied on ½" - 1" Dixon® couplings.

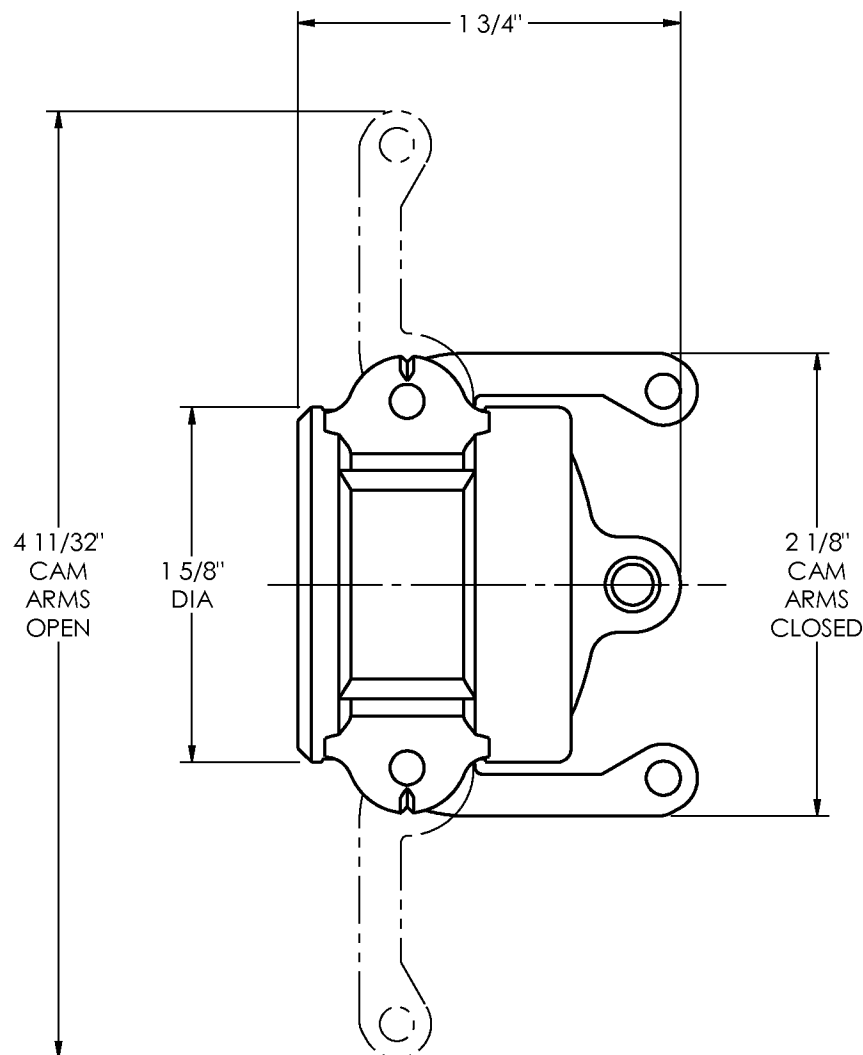
Size	356T6 Aluminum Part #	Aluminum Hard Coat Part #	Brass Part #
½"	<b>50-DC-AL</b>	---	<b>50-DC-BR</b>
¾"	<b>75-DC-AL</b>	---	<b>75-DC-BR</b>
1"	<b>100-DC-AL</b>	---	<b>100-DC-BR</b>
1½"	<b>150-DC-AL</b>	<b>150-DC-ALH</b>	<b>150-DC-BR</b>
2"	<b>200-DC-AL</b>	<b>200-DC-ALH</b>	<b>200-DC-BR</b>
2½"	<b>250-DC-AL</b>	---	---
3"	<b>300-DC-AL</b>	<b>300-DC-ALH</b>	<b>300-DC-BR</b>
4"	<b>400-DC-AL</b>	<b>400-DC-ALH</b>	<b>400-DC-BR</b>
5"	<b>500-DC-AL</b>	---	<b>500-DC-BR</b>
6"	<b>600-DC-AL</b>	<b>600-DC-ALH</b>	---
8"	<b>800-DC-AL</b> <sup>1, 2</sup>	---	---

<sup>1</sup> Dixon® and Boss-Lock™ cam & groove couplings *do not interchange in the 8" size.*
<sup>2</sup> The 8" Dixon® dust cap has 2 cam arms.


Size	Unplated Malleable Iron Part #	316 Stainless Steel Part #
½"	---	<b>50-DC-SS</b> <sup>1</sup>
¾"	---	<b>75-DC-SS</b>
1"	---	<b>100-DC-SS</b>
1½"	---	<b>150-DC-SS</b>
2"	<b>200-DC-MI</b>	<b>200-DC-SS</b>
2½"	---	<b>250-DC-SS</b>
3"	<b>300-DC-MI</b>	<b>300-DC-SS</b>
4"	<b>400-DC-MI</b>	<b>400-DC-SS</b>
5"	---	<b>500-DC-SS</b>
6"	---	<b>600-DC-SS</b>

# 75-DC-SS

CUSTOMER DWG



## AGREEMENT TO MAINTAIN CONFIDENTIALITY

This drawing is owned by Dixon Valve & Coupling Co. and shall be returned upon demand. It is loaned on condition that it shall not be copied or reproduced or submitted to others without the owners consent. In accepting it subject to this condition the recipient further agrees that this drawing or any design detail or concept disclosed herein shall not be used in any way detrimental to or in competition with the owner. If the recipient does not agree to the terms of this agreement they shall return this drawing immediately. The information contained in this drawing is subject to change without notice.

REV: A

DWG NO.: 3151

CUSTOMER DWG

**DIXON VALVE & COUPLING CO.**  
**U. S. A.**

TITLE

3/4" DIXON TYPE DC DUST CAP

DRWN BY:

JAT  
12/13/11

CHECKED BY:

GMJ  
12/13/11

APPROVAL:

GMJ  
12/13/11

MAT'L:

STAINLESS STEEL

**75-DC-SS**