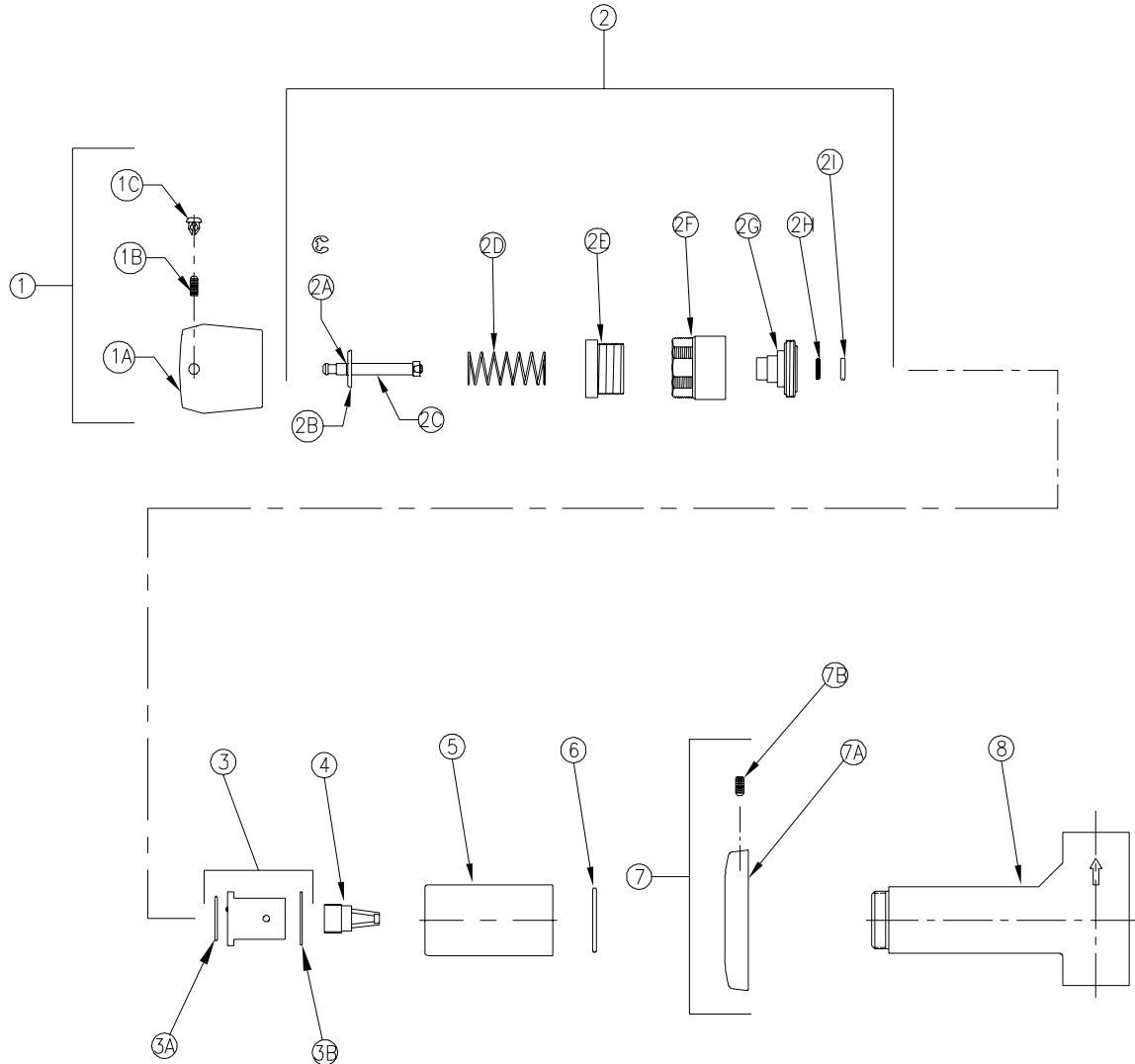


SINGLE METERING SHOWER VALVE

Z87300-CWO



Item	Part Number	Description	Qty.	Item	Part Number	Description	Qty.
1	G60522	Metering Handle Assembly	1	2I	60458001	O-Ring Retainer	1
1A	60601003	Metering Handle	1	3	G67800	Metering Cartridge Assembly	1
1B	62705001	Setscrew	1	3A	58155020	O-Ring	1
1C	G60558	Metering Index Buttons - H, C, T	1	3B	81241001	Washer	1
	60460001	Hot Index	1	4	G67788	Integral Shank Filter	1
	60460002	Cold Index	1	5	61524001	Shower Sleeve	1
	60460003	Tempered Index	1	6	58155024	O-Ring	1
2	G60561	Handle Nut Assembly	1	7	G61994	Shower Valve Escutcheon	1
2A	60465001	E-Ring	1	7A	65557001	Wall Escutcheon	1
2B	60450001	Spring Seat	1	7B	66873001	Set Screw	1
2C	60451003	Stem	1	8	92239001	Shower Valve Body	1
2D	60447001	Spring	1				
2E	60446001	Adjustment Nut	1				
2F	60452001	Cap	1				
2G	60456001	Stem Housing	1				
2H	62499107	O-Ring	1				

ZURN INDUSTRIES LLC ♦ COMMERCIAL BRASS OPERATION ♦ 2640 SOUTH WORK STREET ♦ FALCONER NY 14733
 Phone: 1-716-665-1132 ♦ Fax: 1-716-665-1135 ♦ World Wide Web: www.zurn.com
 In Canada: ZURN INDUSTRIES LIMITED ♦ 3544 Nashua Drive ♦ Mississauga, Ontario L4V1L2 ♦ Phone: 905/405-8272 Fax:
 905/405-1292