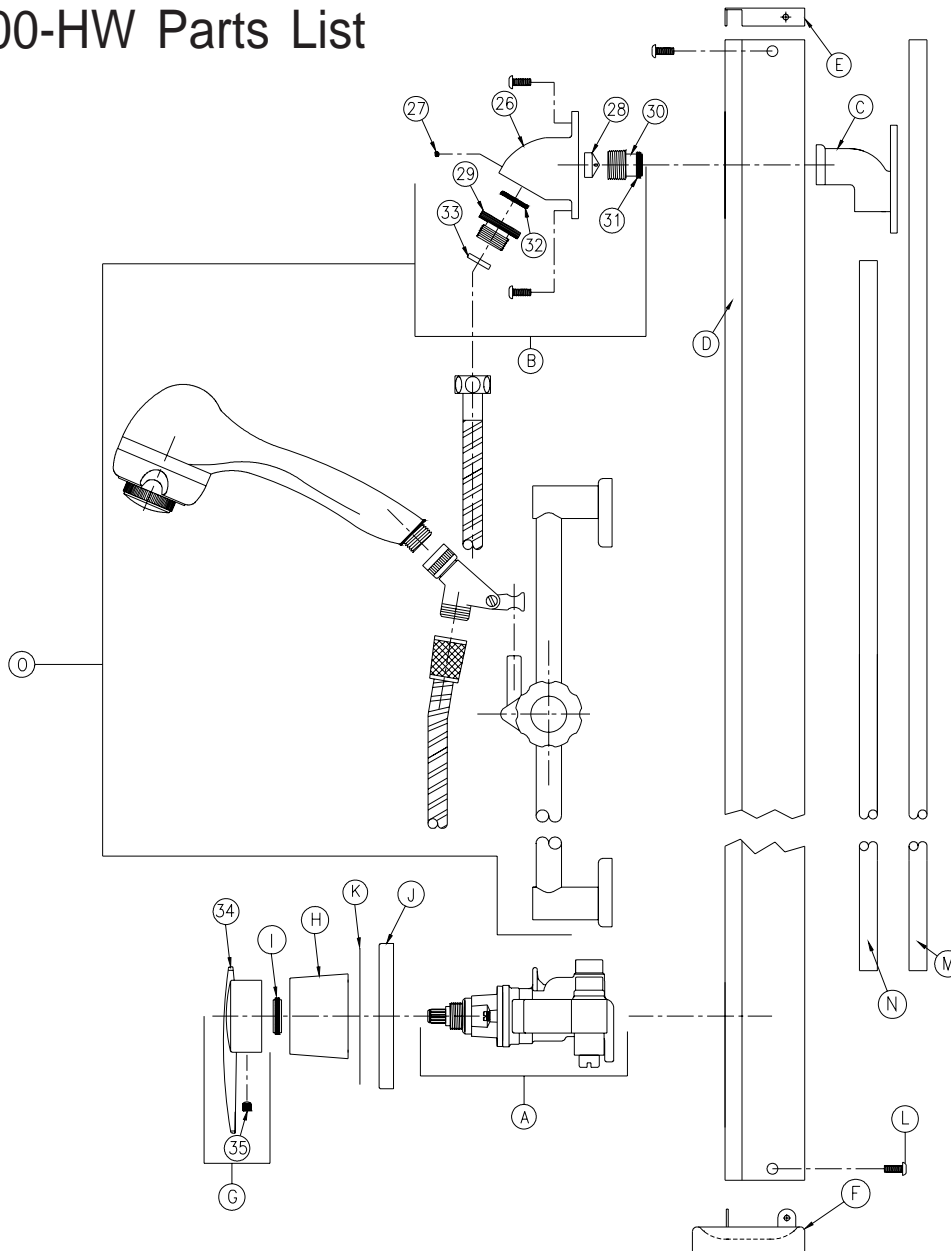


# AQUA-PANEL SHOWER UNIT

## Z7500-HW Parts List



Item	Part Number	Description	Qty	Item	Part Number	Description	Qty
A	7500-100	Aqua Panel Valve Ass'y- 3 Port Shower Valve with Service Stops	1	E	7500-8D	End Cap	1
B	Z7000-iHW-AQ	Institutional Wall Mount without Shower Head	1	F	7500-93	Soap Dish	1
26	7089-1CH	Institutional Body Mount	1	G	Z7000-LH	Lever Handle Assembly	1
27	7000-11V	Set Screw	1	34	7000-6F	Stem Handle	1
28	7000-12E	Flow Control Washer	1	35	7000-11G	Stem Handle Set Screw	1
29	7500-29	Outlet Adaptor	1	H	7500-81	Primary Escutcheon	1
30	7500-19	Inlet Adaptor	1	I	7500-9	Escutcheon Nut	1
31	4013N	Quad Ring	1	J	7500-81H	Dial Plate Escutcheon	1
32	114N	O-ring	1	K	T7500	Dial Plate Tag	1
33	52-12	Seat Washer	1	L	7500-11AV	Screw	13
C	7500-17-010F	Wall Mounting Bracket	1	M	7500-21	Pipe Inlet	2
D	7500-8	Main Cover Shroud	1	N	7500-21B	Pipe Outlet	1
				O	Z7000-HWi	Standard Handwall Unit without Supply Elbow and Flange	1

ZURN INDUSTRIES, LLC ♦ COMMERCIAL BRASS OPERATION ♦ 2640 SOUTH WORK STREET ♦ FALCONER NY 14733

Phone: 1-716-665-1132 ♦ Fax: 1-716-665-1135 ♦ World Wide Web: www.zurn.com

In Canada: ZURN INDUSTRIES LIMITED ♦ 3544 Nashua Drive ♦ Mississauga, Ontario L4V1L2 ♦ Phone: 905/405-8272 Fax: 905/405-1292