

# Makita

## 18V LXT LITHIUM-ION CORDLESS IMPACT DRIVER

COMPACT MAKITA BUILT, 4-POLE MAXIMUM TORQUE MOTOR  
DELIVERS 1,330 IN.LBS. OF TORQUE

Motor Provides 2,300 RPM and 3,200 IPM for Added Muscle for Tough Jobs

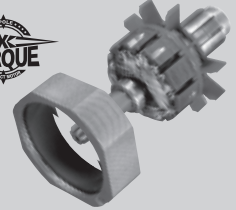
Convenient One-Touch Chuck for Simple Bit Installation

50% More Compact Design: 5-3/4" Long and Weighs Only 3.4 lbs.

Built-In L.E.D. Light Illuminates the Work Area

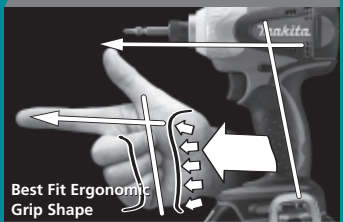
### POWER

MAX  
TORQUE



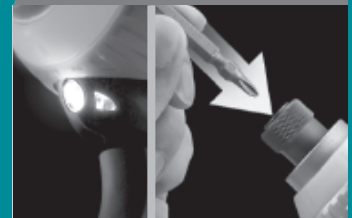
Makita built 4-pole motor delivers  
1,330 in.lbs. of max torque;  
(0-2,300 RPM and 0-3,200 IPM)

### COMFORT



Only 3.4 lbs. with ergonomic grip

### CONVENIENCE



Built-in L.E.D. light and one-touch  
chuck for simple bit insertion

### PERFORMANCE



LXT Li-Ion batteries charge in 30  
minutes, run longer and deliver  
2.5X more cycles

Models  
BTD141  
BTD141Z

**LXT**  
LITHIUM-ION

# INDUSTRY LEADER - UPGRADED

# 18V LXT LITHIUM-ION CORDLESS IMPACT DRIVER

## Models BTD141/BTD141Z

### FEATURES & BENEFITS

- Compact Makita built, 4-pole maximum torque motor delivers 1,330 in. lbs. of torque
- Convenient one-touch chuck for simple bit insertion
- 50% more compact design: 5-3/4" long and weighs only 3.4 lbs.
- Built-in L.E.D. light illuminates the work area
- Ergonomic shape fits like a glove with even pressure and easy control
- Electric brake for maximum productivity
- Makita's proprietary hammer and anvil are made using the highest quality steel and heat hardened to last longer
- Two-piece armature and field along with externally accessible brushes for serviceability and longer motor life
- Makita Lithium-Ion battery provides longer run time, 5x lower self-discharge (for use any time) & 16 firm holding contact terminals (for constant high power)
- 30-minute rapid optimum charger communicates with the battery's built-in chip throughout the charging process to optimize battery life by actively controlling current, voltage and temperature
- 30-minute rapid optimum charger has a built-in fan to cool the battery to produce more lifetime work
- 3-year warranty on tool and 1-year warranty on battery and charger

### STANDARD EQUIPMENT

- 2 ea. 18V LXT Lithium-Ion 3.0Ah battery (BL1830)
- 30-minute rapid optimum charger (DC18RA)
- Tool case (824774-7)
- Plastic battery cover (450128-8)

### SPECIFICATIONS

Hex shank	1/4"
No load speed	0-2,300 RPM
Impacts per minute	0-3,200 IPM
Maximum torque	1,330 in.lbs.
Battery	18VDC (3.0Ah)
Overall length	5-3/4"
Net weight	3.4 lbs. (w./battery)
Shipping weight	12.4 lbs.
Master carton qty.	3
UPC codes: BTD141	088381-087742
BTD141Z	088381-087759

### OPTIONAL ACCESSORIES

- Keyless chuck adaptor (763198-1)
- 17 Pc. Impact drill & driver set (T-00153)
- 28 Pc. Impact drill & driver set (T-00169)
- Optimum automotive charger (DC18SE)



Model BTD141



Model BTD141Z



Makita offers a wide variety of CORDLESS IMPACT DRIVER accessories. For a complete listing, please refer to the Makita General Catalog, or visit our website at [makitatools.com](http://makitatools.com), or call 1-800-4MAKITA.

All specifications subject to change without prior notice. All models and accessories subject to stock on hand.  
NTF-0408-SM MA-0313-08 For more information, call 1-800-4MAKITA or visit [makitatools.com](http://makitatools.com)

**Makita**  
Makita U.S.A., 14930 Northam St., La Mirada, CA 90638