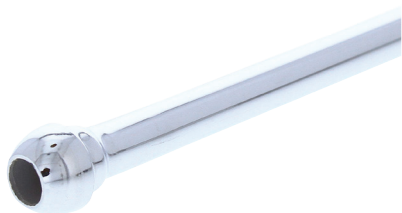
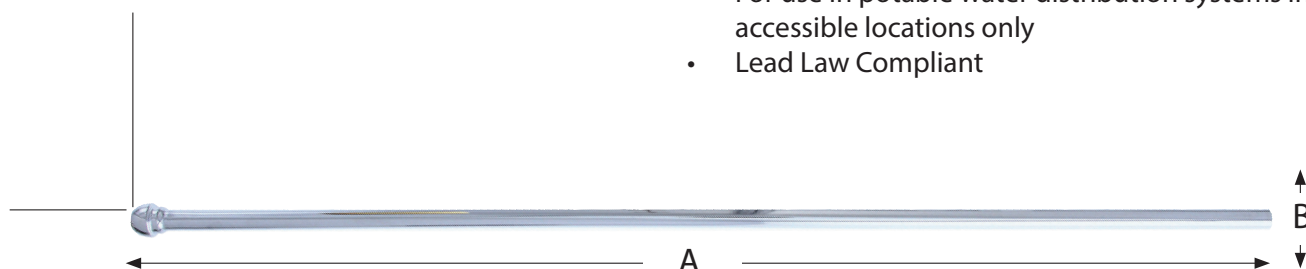


## 3/8" LAVATORY FAUCET RISER WITH BULLNOSE



- Corrosion resistant finish
- Used to connect faucet supply valve to 1/2" faucet inlet
- 3/8" OD
- Bullnose head forms a complete seal against faucet
- Flexible riser can be gently bent to shape without breaking
- Constructed of flexible annealed copper
- Open end can be cut to perfect length
- The bullnose head attaches to the faucet with 1/2" slip-nut (not included)
- For use in potable water distribution systems in accessible locations only
- Lead Law Compliant



Part No.	Finish	A	B
S04020	Chrome Plated	12"	3/8" OD
S4401BN	Brushed Nickel	12"	3/8" OD
S4401RB	Oil Rubbed Bronze	12"	3/8" OD
S4401WB	Old World Bronze	12"	3/8" OD
S04021	Chrome Plated	15"	3/8" OD
S04022	Chrome Plated	20"	3/8" OD
S44002	Polished Brass	20"	3/8" OD
S4402BN	Brushed Nickel	20"	3/8" OD
S4402RB	Oil Rubbed Bronze	20"	3/8" OD
S4402WB	Old World Bronze	20"	3/8" OD
S04023	Chrome Plated	30"	3/8" OD
S04024	Chrome Plated	36"	3/8" OD