

# ProPEX® EP Reducing Tee

Submittal Information  
Revision B: Dec. 3, 2009



## Project Information

Job Name:

Location:

Part No. Ordered:

Engineer:

Date Submitted:

Contractor:

Submitted By:

Manufacturer's Representative:

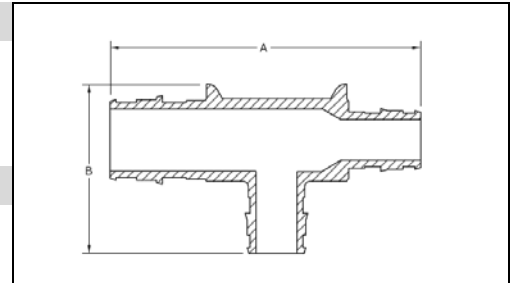
Approved By:

## Technical Data

Material: UDEL Polysulfone, 20% Glass-reinforced (½" - 1");  
Acudel Polysulfone (1¼" - 1½"); Radel (2")

Maximum Temperature (no pressure): 320°F (160°C)

Max. Working Temperature/Pressure: 210°F (99°C) at 150 psi



## Product Information and Application Use

ProPEX® EP Reducing Tee makes diverting connections for Uponor PEX tubing in supply and return mains, and are also approved for radiant heating and cooling systems. Branch size is listed last in the part description.<sup>1</sup>

✓ Description	Part Number	Length	Width	Weight
ProPEX EP Reducing Tee, ½" PEX x ½" PEX x ¾" PEX	Q4755575	2.86"	1.76"	0.05 lbs.
ProPEX EP Reducing Tee, ¾" PEX x ½" PEX x ½" PEX	Q4757555	3.10"	1.70"	0.04 lbs.
ProPEX EP Reducing Tee, ¾" PEX x ½" PEX x ¾" PEX	Q4757557	3.10"	1.94"	0.04 lbs.
ProPEX EP Reducing Tee, ¾" PEX x ¾" PEX x ½" PEX	Q4757550	3.30"	1.70"	0.04 lbs.
ProPEX EP Reducing Tee, ¾" PEX x ¾" PEX x 1" PEX	Q4757710	3.64"	2.32"	0.08 lbs.
ProPEX EP Reducing Tee, 1" PEX x ¾" PEX x ¾" PEX	Q4751775	3.90"	2.24"	0.08 lbs.
ProPEX EP Reducing Tee, 1" PEX x ¾" PEX x 1" PEX	Q4751751	3.90"	2.47"	0.08 lbs.
ProPEX EP Reducing Tee, 1" PEX x 1" PEX x ½" PEX	Q4751150	4.10"	2.00"	0.08 lbs.
ProPEX EP Reducing Tee, 1" PEX x 1" PEX x ¾" PEX	Q4751175	4.10"	2.24"	0.09 lbs.
ProPEX EP Reducing Tee, 1¼" PEX x 1" PEX x ¾" PEX	Q4751317	4.60"	2.73"	0.11 lbs.
ProPEX EP Reducing Tee, 1¼" PEX x 1" PEX x 1" PEX	Q4751311	4.60"	2.97"	0.12 lbs.
ProPEX EP Reducing Tee, 1¼" PEX x 1¼" PEX x ¾" PEX	Q4751337	4.80"	2.73"	0.13 lbs.
ProPEX EP Reducing Tee, 1¼" PEX x 1¼" PEX x 1" PEX	Q4751331	4.80"	2.97"	0.14 lbs.
ProPEX EP Reducing Tee, 1½" PEX x 1" PEX x ¾" PEX	Q4751517	5.25"	3.06"	0.17 lbs.
ProPEX EP Reducing Tee, 1½" PEX x 1" PEX x 1" PEX	Q4751511	5.25"	3.30"	0.18 lbs.
ProPEX EP Reducing Tee, 1½" PEX x 1¼" PEX x ¾" PEX	Q4751537	5.50"	2.65"	0.18 lbs.
ProPEX EP Reducing Tee, 1½" PEX x 1¼" PEX x 1" PEX	Q4751531	5.50"	2.85"	0.19 lbs.
ProPEX EP Reducing Tee, 1½" PEX x 1¼" PEX x 1¼" PEX	Q4751533	5.50"	3.15"	0.21 lbs.
ProPEX EP Reducing Tee, 1½" PEX x 1½" PEX x ¾" PEX	Q4751557	5.80"	3.06"	0.20 lbs.
ProPEX EP Reducing Tee, 1½" PEX x 1½" PEX x 1" PEX	Q4751551	5.75"	3.30"	0.21 lbs.
ProPEX EP Reducing Tee, 1½" PEX x 1½" PEX x 1¼" PEX	Q4751553	5.80"	3.56"	0.22 lbs.
ProPEX EP Reducing Tee, 2" PEX x 1½" PEX x ¾" PEX	Q4752575	6.62"	3.30"	0.30 lbs.
ProPEX EP Reducing Tee, 2" PEX x 1½" PEX x 1" PEX	Q4752051	6.50"	3.40"	0.30 lbs.
ProPEX EP Reducing Tee, 2" PEX x 1½" PEX x 1¼" PEX	Q4752053	6.62"	3.80"	0.34 lbs.
ProPEX EP Reducing Tee, 2" PEX x 1½" PEX x 1½" PEX	Q4752055	6.62"	4.10"	0.35 lbs.
ProPEX EP Reducing Tee, 2" PEX x 2" PEX x ¾" PEX	Q4752275	6.93"	3.30"	0.34 lbs.
ProPEX EP Reducing Tee, 2" PEX x 2" PEX x 1" PEX	Q4752210	6.93"	3.40"	0.36 lbs.
ProPEX EP Reducing Tee, 2" PEX x 2" PEX x 1¼" PEX	Q4752213	6.62"	3.80"	0.37 lbs.
ProPEX EP Reducing Tee, 2" PEX x 2" PEX x 1½" PEX	Q4752215	7.13"	4.10"	0.44 lbs.

## Installation

Use the appropriate ProPEX Ring for PEX tubing. Refer to the AquaPEX® Professional Plumbing Installation Handbook or Radiant Installation Handbook for additional information.

Standards	Codes	Listings
CAN/CSA B137.5; ASTM F877; ASTM F1960	IPC; UPC; NSPC; NPC of Canada	NSF U.P. CODE; ANSI/NSF 14- and 61-certified; HUD MR 1269; ICC ESR 1099

Related Applications	Contact Information
PEX-a Plumbing Systems Radiant Heating and Cooling Systems Snow and Ice Melting Systems Permafrost Protection Systems Turf Conditioning Systems	Uponor, Inc. 5925 148 <sup>th</sup> Street West Apple Valley, MN 55124 USA Phone: (800) 321-4739 Fax: (952) 891-2008 www.uponor-usa.com
	Uponor Ltd. 2000 Argentia Rd., Plaza 1, Ste. 200 Mississauga, ON L5N 1W1 CANADA Phone: (888) 994-7726 Fax: (800) 638-9517 www.uponor.ca

<sup>1</sup>ProPEX® is a registered trademark of Uponor, Inc. ProPEX™ is a trademark of Uponor Ltd.