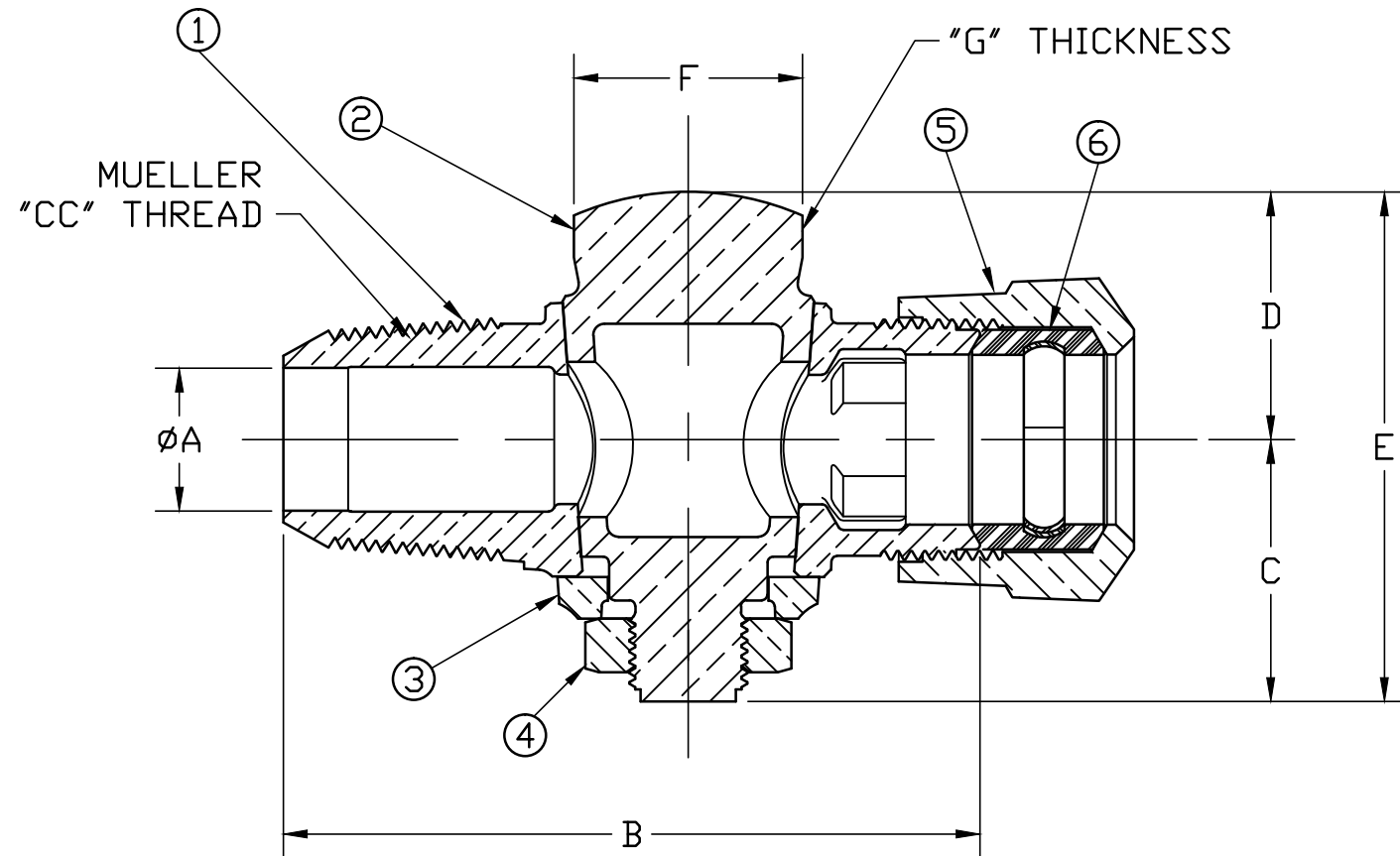



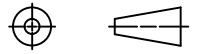
No.	DESCRIPTION	MATERIAL
1	BODY	CAST LOW LEAD BRASS ALLOY
2	KEY	CAST LOW LEAD BRASS ALLOY
3	KEY WASHER	CAST BRONZE ASTM B62 ALLOY C83600
4	KEY NUT	CAST BRONZE ASTM B62 ALLOY C83600
5	CTS GSKT SUB	SBR ASTM D2000 -GSKT 410 _{SS} -BAND
6	CONN NUT	CAST BRASS ASTM B62 ALLOY C83600

SIZE	ØA	B	C	D	E	F	G
1/2	.50	3.12	1.16	1.14	2.30	.86	.34
5/8	.63	3.55	1.30	1.20	2.50	1.00	.34
3/4	.75	3.66	1.38	1.3	2.68	1.20	.38
3/4x1	.75	4.19	1.38	1.3	2.68	1.20	.38
1	1.00	4.31	1.46	1.41	2.87	1.48	.38
1-1/2	1.48	5.98	2.33	2.15	4.48	1.11	SQUARE
2	1.86	6.89	2.47	2.36	4.83	1.23	SQUARE



NOTE: ALL WETTED PARTS ARE LOW LEAD BRASS ALLOY

FILEPATH: PROD-ENG\MUELLER\APPROVED\H15008N

DRFTR	JGarvin	2/4/11			UNLESS OTHERWISE NOTED SURFACE PREPARATION: BREAK CORNER(S) ---- .000 SURFACE FINISH -- XX RMS TOLERANCE(S): LINEAR ----- ± .000 ANGULAR ----- ± 0°00'		THIRD ANGLE PROJECTION  REF. No. SCALE FULL	
CHKR								
ENGR								
MGR								
BY		DATE	STK No:	MAT'L:				
1.00	WAS .92	10/17/13	RWB	DESCR.		CORPORATION STOP - LLB 'CC TAPER" x 110 CTS)		
REV	ECR	DESCRIPTION	DATE	BY	CHKR	DWG NUMBER H15008N		
PER EST NO: DXXXX EST FIN WT = 0.0000 lbs								

DWG NUMBER
 H15008N
 442-MRKTG

TITLE TO AND OWNERSHIP OF THIS ENGINEERING
 DATA REMAINS IN Mueller Co. NO USE IS TO BE
 MADE OF THIS DATA EXCEPT AS SPECIFICALLY
 AUTHORIZED BY Mueller Co. ASSENT ON THE PART
 OF THE RECIPIENT TO THESE CONDITIONS IS PRESUMED