

Fig. 157

Extension piece

Size Range: $\frac{3}{8}$ " through $\frac{7}{8}$ "

Material: Malleable iron

Finish: Plain or Zinc Plated

Maximum Temperature: 450° F

Service: For attaching hanger rod to various types of building attachments.

Approvals: UL Listed ($\frac{3}{8}$ " - $\frac{7}{8}$ " rod size) and FM Approved ($\frac{3}{8}$ " & $\frac{1}{2}$ " rod size).

Installation: May be used to form an integral part of malleable iron beam clamps Fig. 218.

Ordering: Specify rod size, figure number, name and finish.

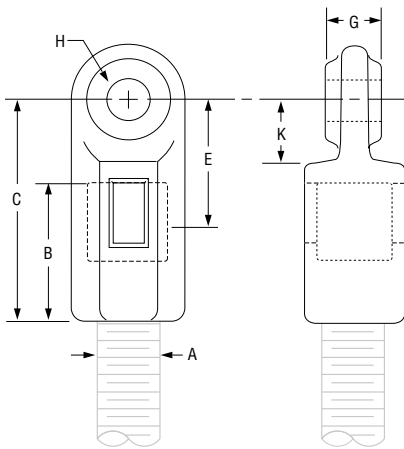


FIG. 157: DIMENSIONS (IN) • LOADS (LBS) • WEIGHTS (LBS)								
Rod Size A	Max Load	Weight	B	C	Rod Take-Out - E	G	H	K
$\frac{3}{8}$	730	0.20	1 $\frac{1}{4}$	2 $\frac{1}{16}$	1 $\frac{1}{4}$	$\frac{1}{2}$	1 $\frac{1}{2}$	$\frac{9}{16}$
$\frac{1}{2}$	1,350	0.40	1 $\frac{3}{8}$	2 $\frac{5}{16}$	1 $\frac{3}{8}$	5 $\frac{5}{8}$		$\frac{11}{16}$
$\frac{5}{8}$	1,550	0.44	1 $\frac{1}{2}$	2 $\frac{7}{16}$	1 $\frac{7}{16}$		$\frac{3}{4}$	
$\frac{3}{4}$	2,100	0.65	1 $\frac{3}{4}$	2 $\frac{7}{8}$	1 $\frac{11}{16}$		7 $\frac{7}{8}$	
$\frac{7}{8}$	2,350	0.78	1 $\frac{7}{8}$	2	1 $\frac{3}{4}$	$\frac{9}{16}$		

PROJECT INFORMATION		APPROVAL STAMP	
Project:		<input type="checkbox"/> Approved	
Address:		<input type="checkbox"/> Approved as noted	
Contractor:		<input type="checkbox"/> Not approved	
Engineer:		Remarks:	
Submittal Date:			
Notes 1:			
Notes 2:			