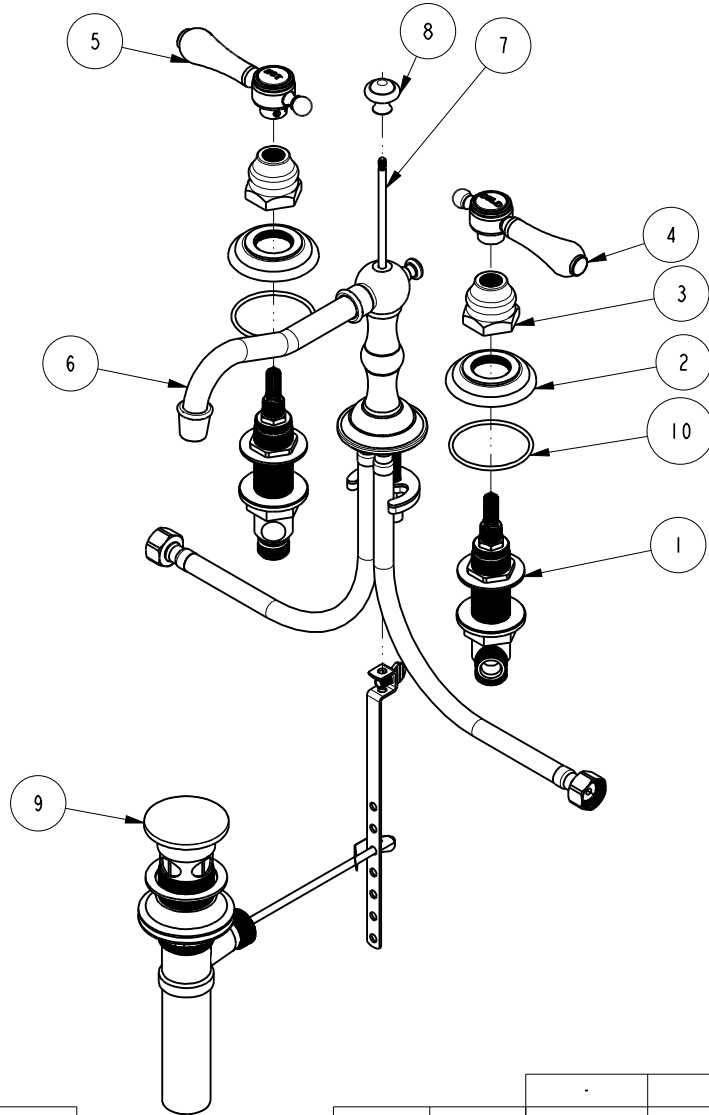


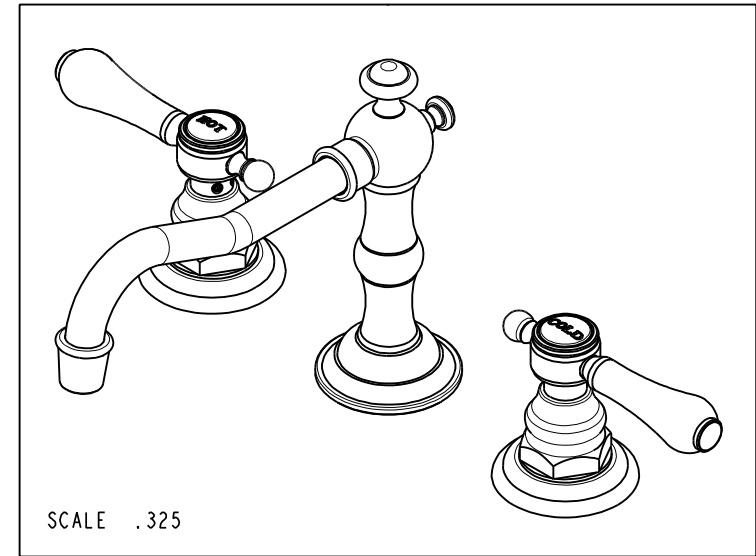
NOTES:

1. TO INSPECT ASSEMBLY, FOLLOW FIRST ARTICLE AND IN PROCESS INSPECTION SHEET.



BILL OF MATERIAL (CURRENT LEVEL)

ITEM	PT/ASSY	DESCRIPTION	TYPE	QTY.
1	1-525	W/S VALVE ASM	ASSEMBLY	1
2	10048	ESCUTCHEON W/S VALVE	PART	2
3	10523	HEX ESCUTCHEON BONNET	PART	2
4	2-133	HANDLE ASSEMBLY - COLD	ASSEMBLY	1
5	2-134	HANDLE ASSEMBLY - HOT	ASSEMBLY	1
6	3-360	WIDE SPREAD SPOUT ONLY	ASSEMBLY	1
7	10288	3/16" POP UP ROD	PART	1
8	10289	POP-UP KNOB	PART	1
9	325	POP UP ASSEMBLY	ASSEMBLY	1
10	91753	O-RING, # 2-136, EP, 50 DURO - GREY	PART	2



SCALE .325

ZONE	REV	DESCRIPTION	DATE	APPROVED
-	E	EN-4300m	10/21/20	R.S.
-	D	EN-2334	12/19/12	-
-	C	EN-1616	09/13/10	-
-	B	EO-1051	07/28/08	-
-	A	EO-0148	01/29/03	-

COPYRIGHT 2005 BRASSTECH, INC. THESE DRAWINGS AND THE DESIGNS DEPICTED HEREIN ARE THE PROPRIETARY PROPERTY OF BRASSTECH. ANY USE OR REPRODUCTION IS SUBJECT TO THE EXPRESS APPROVAL OF BRASSTECH. UNAUTHORIZED USE IS STRICTLY PROHIBITED. ALL RIGHTS RESERVED.

TESTING	ASSEMBLY	PLATING	POLISHING	MACHINING	TOOLING FIXTURE #	APPLICATION
-	-	-	-	-	-	REMOVE ALL BURRS AND SHARP EDGES
-	-	-	-	-	-	USED ON
-	-	-	-	-	-	REMOVE ALL BURRS AND SHARP EDGES

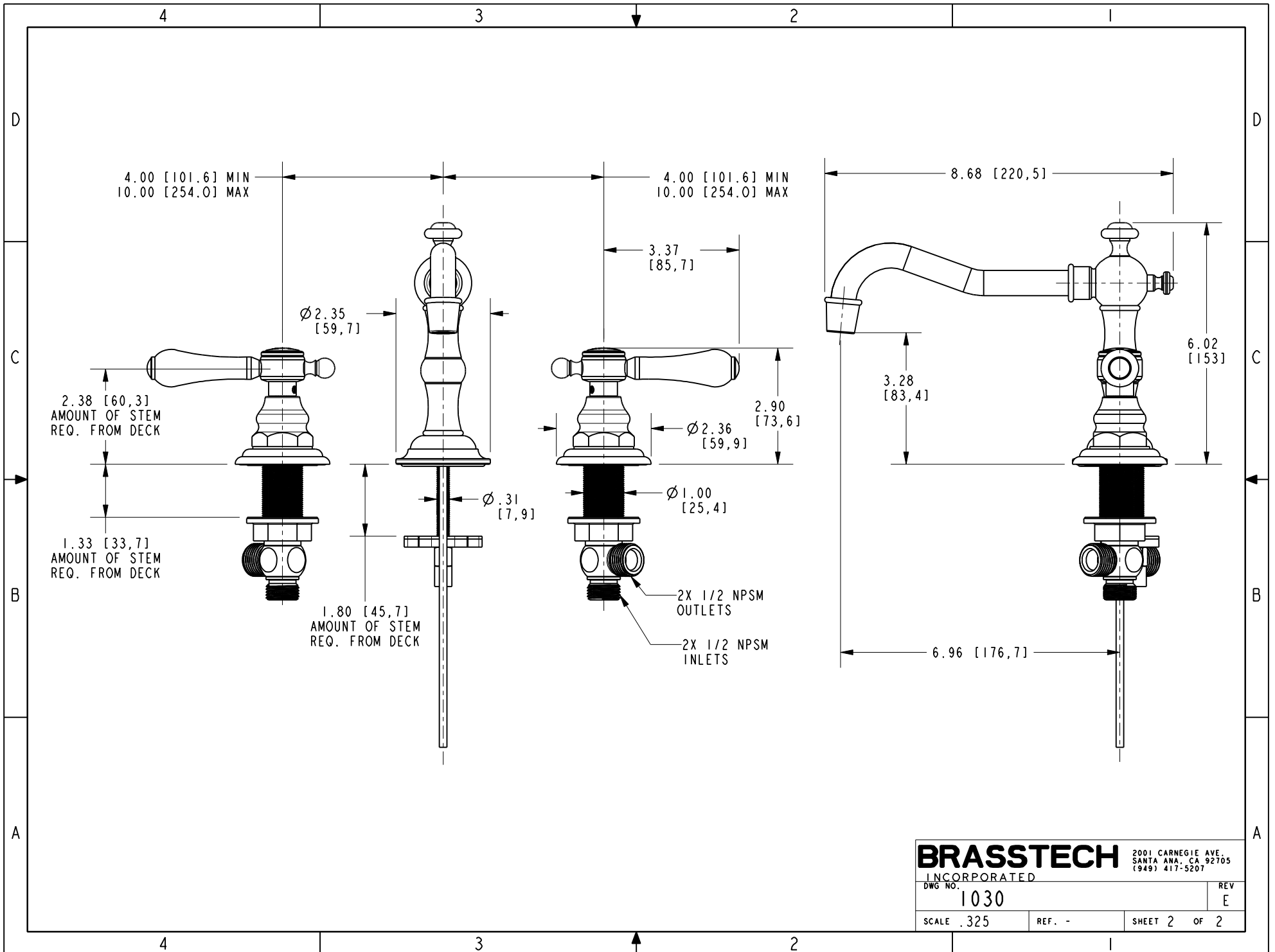
UNITS ARE: INCHES [MM]		
TOLERANCES ARE:		
FRACTIONS	DECIMALS	ANGLES
±1/16"	.X ±.1 [2.5]	±°
	.XX ±.06 [1.5]	
X.XXX DENOTES CRITICAL DIMS.		
ALL THREADS ARE CRITICAL		
DRAWN	JINSON	10/21/20
CHECKED	R.S.	10/21/20
APPROVED	R.S.	10/21/20

**BRASSTECH** 2001 CARNEGIE AVE. SANTA ANA, CA 92705 (949) 417-5207  
INCORPORATED

**WIDESPREAD FAUCET SET**

DWG NO. **1030** REV **E**

SCALE .200 REF. - SHEET 1 OF 2



**BRASSTECH**  
 INCORPORATED  
 2001 CARNEGIE AVE.  
 SANTA ANA, CA 92705  
 (949) 417-5207

DWG NO. 1030	REV E
SCALE .325	REF. -
SHEET 2 OF 2	