

4

3

2

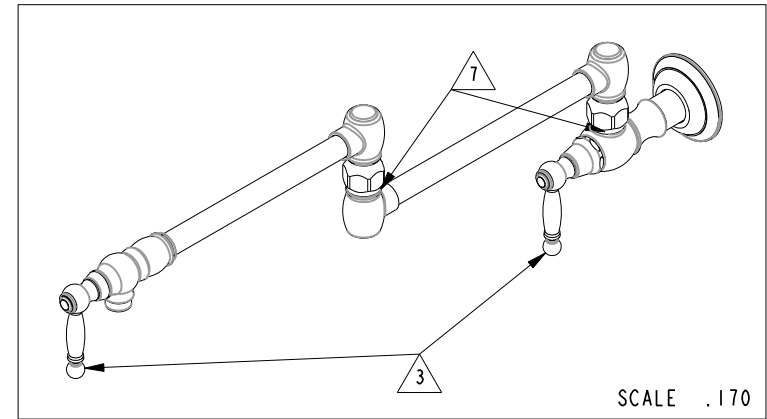
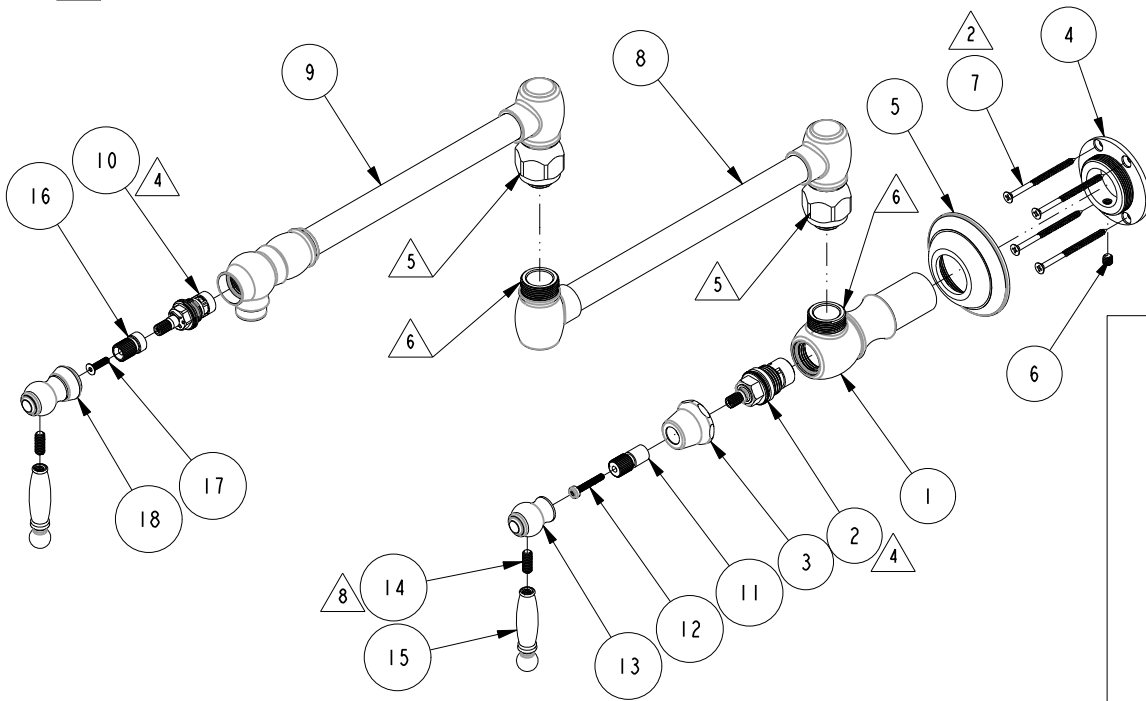
1

NOTES:

- (NI) 1. FIT / FORM / FUNCTION SHALL FOLLOW PS-E.008.
- 2. PACK THESE ITEMS IN A PLASTIC BAG.
- 3. HANDLE IN CLOSE POSITION.
- 4. INSTALLATION TORQUE 11-14 LB-FT.
- 5. INSTALLATION TORQUE 6-9 LB-FT.
- 6. APPLY LOCTITE 680.
- 7. SWIVEL CONNECTION SHALL NOT HAVE NOTICEABLE WOBBLINESS AFTER ASSEMBLY.
- 8. APPLY LOCTITE 242.

BILL OF MATERIAL (CURRENT LEVEL)

ITEM	PT/ASSY	DESCRIPTION	TYPE	QTY.
1	11299	VALVE BODY, WALL-END	PART	1
2	1-326	W/S CARTRIDGE FRICTION - HOT	PART	1
3	10331	BONNET FOR 933, 934	PART	1
4	11301	FLANGE, MOUNTING	PART	1
5	2-555	FLANGE ASM, TRAD	ASSEMBLY	1
6	92231	SCRW, 1/4-20 X 1/4 SKT HD CUP PT SS	PART	1
7	92223	SCRW, #8 X 2-1/2 PHL FLT HD SS	PART	4
8	2-550	LOWER ARM ASM, TRAD	ASSEMBLY	1
9	2-549	UPPER ARM ASM, TRAD	ASSEMBLY	1
10	1-134	CARTR 3/8 HOT 1/4 TR	PART	1
11	12071	HANDLE ADAPTER, LONG	PART	1
12	92809	SCRW, M4X.7 X 25 PHL PAN HD SS	PART	1
13	13005	HUB, LEVER HANDLE	PART	1
14	92005	SCRW, 1/4-20 X 5/8 SKT HD CUP PT SS	PART	2
15	11314	HANDLE, LEVER	PART	2
16	12750	ADAPTER	PART	1
17	92477	SCRW, M4 X 16 SKT FLT HD SS	PART	1
18	13004	HUB, LEVER HANDLE	PART	1



-	F	EN-3916	07/11/19	V.V.
-	E	EN-3756	11/26/18	C.G.
-	D	EN-3598	10/12/18	J.A.
-	C	EN-2874	10/01/15	N.S.
-	B	EN-2528	05/08/13	-
-	A	EO-0701	08/25/06	-
-	-	EO-0641	01/18/06	-
ZONE	REV	DESCRIPTION	DATE	APPROVED

COPYRIGHT 2005 BRASSTECH, INC. THESE DRAWINGS AND THE DESIGNS DEPICTED HEREIN ARE THE PROPRIETARY PROPERTY OF BRASSTECH. ANY USE OR REPRODUCTION IS SUBJECT TO THE EXPRESS APPROVAL OF BRASSTECH. UNAUTHORIZED USE IS STRICTLY PROHIBITED. ALL RIGHTS RESERVED.

TESTING	-	-	-
ASSEMBLY	-	-	-
PLATING	-	-	-
POLISHING	-	NEXT ASSY	USED ON
MACHINING	-	APPLICATION	
TOOLING FIXTURE #	REMOVE ALL BURRS AND SHARP EDGES		

UNITS ARE: INCHES [MM]	
TOLERANCES ARE:	
FRACTIONS DECIMALS	ANGLES
±1/16"	±1°
.X ±.1 [2.5]	
.XX ±.06 [1.5]	
(X.XXX) DENOTES CRITICAL DIMS. ALL THREADS ARE CRITICAL	
DRAWN	JINSON 11/26/18
CHECKED	C.G. 11/26/18
APPROVED	C.G. 11/26/18

**BRASSTECH** 2001 CARNEGIE AVE. SANTA ANA, CA 92705 (949) 417-5207  
INCORPORATED

POT FILLER, WALL, LEVER, TRAD

DWG NO. 9482 REV F

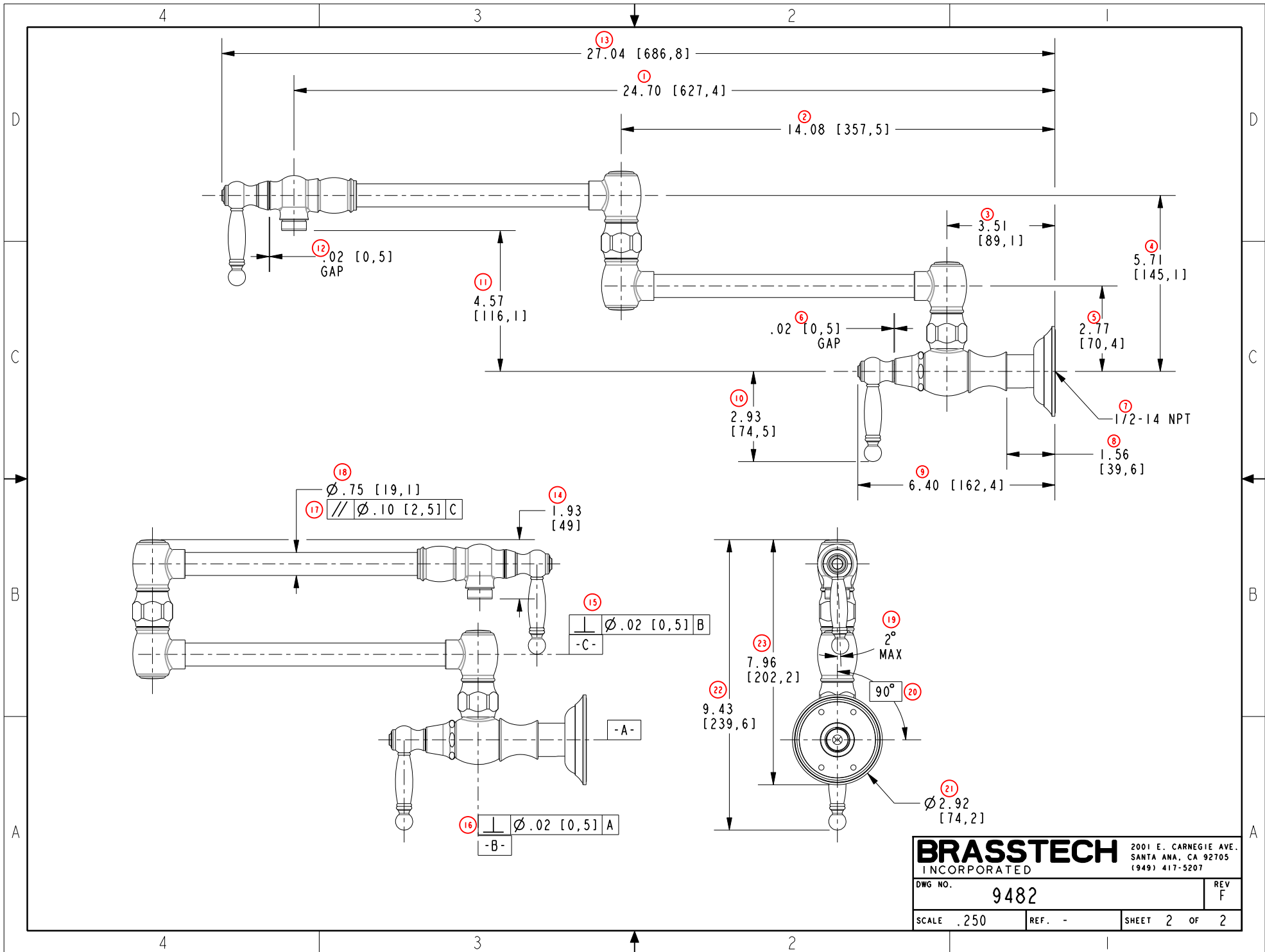
SCALE .200 REF. - SHEET 1 OF 2

4

3

2

1



<b>BRASSTECH</b>		2001 E. CARNEGIE AVE. SANTA ANA, CA 92705 (949) 417-5207	
DWG NO.	9482	REV F	
SCALE .250	REF. -	SHEET 2 OF 2	