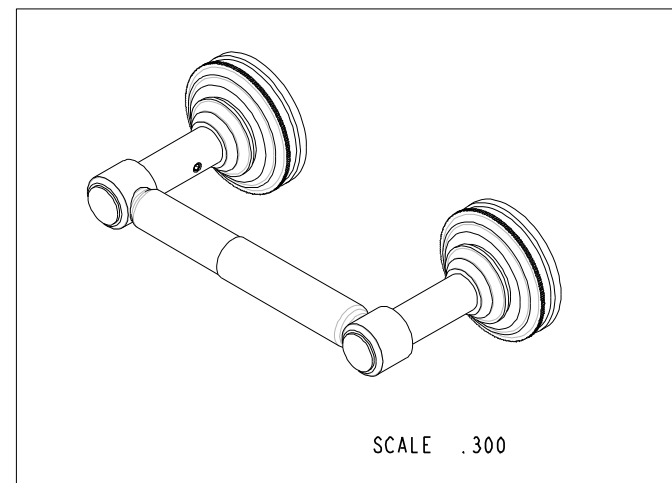
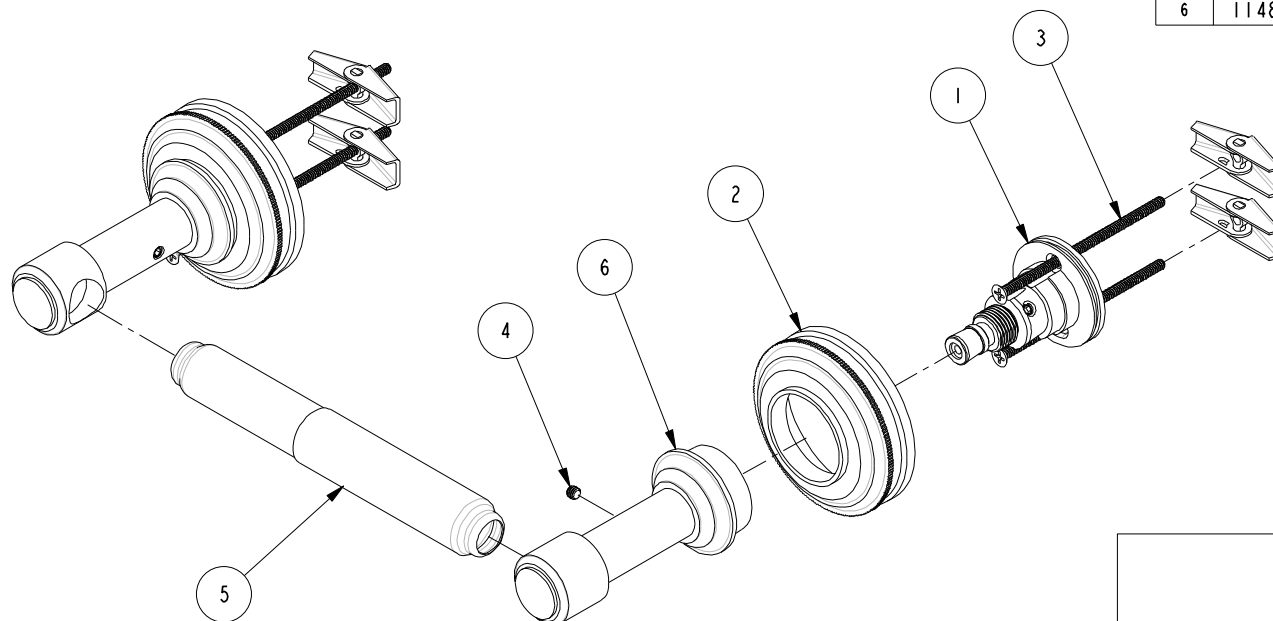


BILL OF MATERIAL (CURRENT LEVEL)				
ITEM	PT/ASSY	DESCRIPTION	TYPE	QTY.
1	1-211	ACCESSORY MTG KIT	ASSEMBLY	2
2	11088	HANDLE ESCUTCHEON	PART	2
3	1-125	HARDWARE KIT	ASSEMBLY	2
4	92000	SCREW 8 - 32 X 1/8 SS	PART	2
5	2-184	TISSUE ROLLER ASSEMBLY	ASSEMBLY	1
6	11488	TOWEL POST	PART	2



COPYRIGHT 2005 BRASSTECH, INC. THESE DRAWINGS AND THE DESIGNS DEPICTED HEREIN ARE THE PROPRIETARY PROPERTY OF BRASSTECH. ANY USE OR REPRODUCTION IS SUBJECT TO THE EXPRESS APPROVAL OF BRASSTECH. UNAUTHORIZED USE IS STRICTLY PROHIBITED. ALL RIGHTS RESERVED.

BRASSTECH
INCORPORATED

2001 E. CARNEGIE AVE.
SANTA ANA, CA 92705
(949) 417-5207

DOUBLE POST TISSUE HOLDER

ASSY. NO.	
-----------	--

29-28

	A
--	----------

EN-1241

11/23/09

[illegible]

EQ-0309

01/19/04

SCALE . 400

REF.	-
------	---

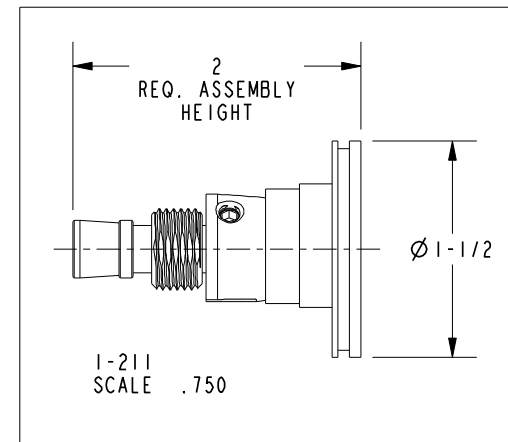
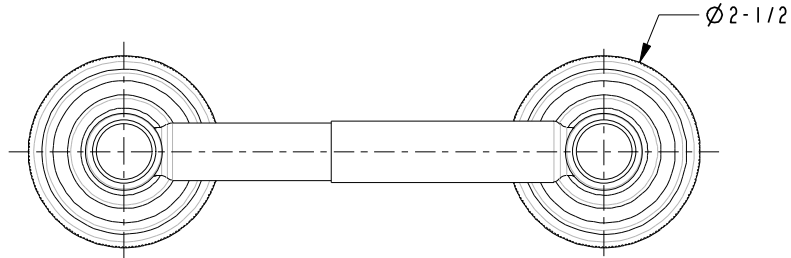
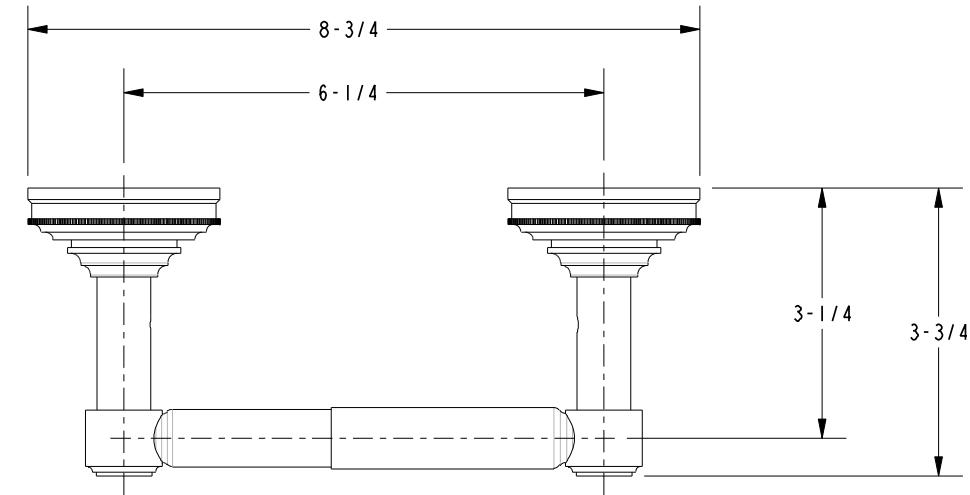
SHEET 1 OF 2

REV

REV DESC

DATE _____

SPECIFICATION DWG



DIMENSIONS ARE IN INCHES AND AN APPROXIMATION OF A TYPICAL INSTALLATION

COPYRIGHT 2005 BRASSTECH, INC. THESE DRAWINGS AND THE DESIGNS DEPICTED HEREIN ARE THE PROPRIETARY PROPERTY OF BRASSTECH. ANY USE OR REPRODUCTION IS SUBJECT TO THE EXPRESS APPROVAL OF BRASSTECH. UNAUTHORIZED USE IS STRICTLY PROHIBITED. ALL RIGHTS RESERVED.

BRASSTECH		2001 E. CARNEGIE AVE. SANTA ANA, CA 92705 (949) 417-5207	
INCORPORATED			
DWG NO.	29-28		REV A
SCALE .400	REF. -	SHEET 2	OF 2