

BILL OF MATERIAL (CURRENT LEVEL)				
ITEM	PT/ASSY	DESCRIPTION	TYPE	QTY.
1	1-212	ACCESSORY MTG KIT	ASSEMBLY	1
2	10048	ESCUTCHEON W/S VALVE	PART	1
3	40236	OPEN TOWEL/TISSUE POST	PART	1
4	2-304	ROLLER ASM-TISSUE	ASSEMBLY	1
5	92107	SCW 8-32 X 1/4 DOG PT	PART	1
6	92000	SCREW 8 - 32 X 1/8 SS	PART	1
7	1-125	HARDWARE KIT	ASSEMBLY	1

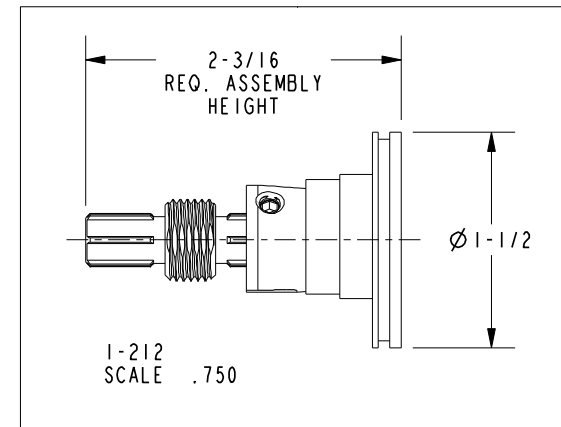
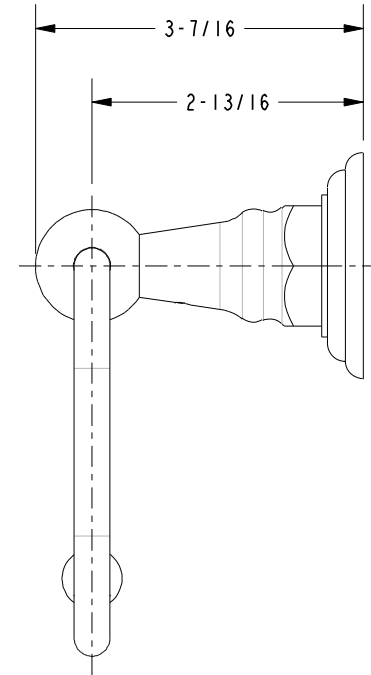
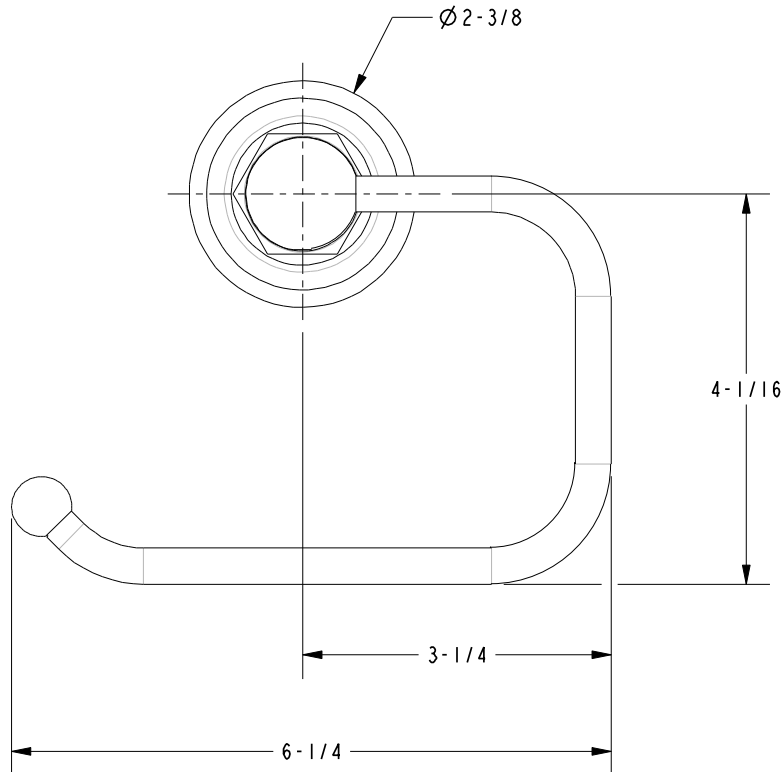
COPYRIGHT 2005 BRASSTECH, INC. THESE DRAWINGS AND THE DESIGNS DEPICTED HEREIN ARE THE PROPRIETARY PROPERTY OF BRASSTECH. ANY USE OR REPRODUCTION IS SUBJECT TO THE EXPRESS APPROVAL OF BRASSTECH. UNAUTHORIZED USE IS STRICTLY PROHIBITED. ALL RIGHTS RESERVED.

**BRASSTECH**  
INCORPORATED  
2001 E. CARNEGIE AVE.  
SANTA ANA, CA 92705  
(949) 417-5207

OPEN TOWEL/TISSUE HOLDER T4

ASSY. NO.		13-27		A	EN-1241	11/26/09
SCALE .450		REF. -		-	RELEASED	08/29/03
SHEET 1 OF 2		REV	REV DESC	DATE		

# SPECIFICATION DWG



DIMENSIONS ARE IN INCHES AND AN APPROXIMATION OF A TYPICAL INSTALLATION

COPYRIGHT 2005 BRASSTECH, INC. THESE DRAWINGS AND THE DESIGNS DEPICTED HEREIN ARE THE PROPRIETARY PROPERTY OF BRASSTECH. ANY USE OR REPRODUCTION IS SUBJECT TO THE EXPRESS APPROVAL OF BRASSTECH. UNAUTHORIZED USE IS STRICTLY PROHIBITED. ALL RIGHTS RESERVED.

<b>BRASSTECH</b> INCORPORATED		2001 E. CARNEGIE AVE. SANTA ANA, CA 92705 (949) 417-5207
DWG NO.	13-27	REV A
SCALE .500	REF. -	SHEET 2 OF 2