

# 1 System Data Sheet

## ProPress Fitting Systems



Viega ProPress may only be pressed onto copper tube in accordance with ASTM B88 or B75. When pressing onto B88 copper tube, types K, L, and M may be used. Tempers O60 and O50, known as “soft copper”, are limited to nominal sizes ½" to 1¼". Temper H58, known as “hard copper”, may be used with nominal sizes ½" to 4".



When pressing onto B75 copper tube, additional considerations apply. See [Viega ProPress Copper Tube Compatibility Tech Data](#).

ProPress fittings are available in elbows, couplings, reducers, tees, reducing tees, threaded adapters, unions, caps, and flanges. All threaded ½" to 2" fittings are Zero Lead bronze.

### Operating Parameters

- Operating Pressure: 200 psi maximum
- Test Pressure: 600 psi maximum
- Operating Temperature: 0°F to 250°F

### Listings and Certificates

- |                 |                                    |
|-----------------|------------------------------------|
| ■ NSF/ANSI 61   | ■ ABS                              |
| ■ NSF/ANSI 372  | ■ CSA Low Lead Content             |
| ■ IAPMO PS-117  | ■ ASME B16.51, B31.1, B31.3, B31.9 |
| ■ UL/ANSI 213   | ■ NFPA 13, 13D, 13R                |
| ■ FM Class 1920 |                                    |
| ■ ICC-ES IC1002 |                                    |

### Compliant With

- ASME B31
- ASTM B75
- ASTM B88
- IAPMO National Standard Plumbing Code (NSPC)
- IAPMO Uniform Mechanical Code (UMC)
- IAPMO Uniform Plumbing Code (UPC)
- ICC International Mechanical Code (IMC)
- ICC International Plumbing Code (IPC)
- ICC International Residential Code (IRC)
- NFPA 13, 13D, and 13R

Contact your local Viega representative for details on local approvals.

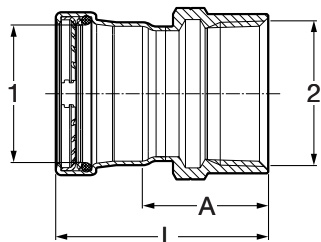
### Approved Applications

- Hot and cold potable water
- Rainwater/gray water
- Fire sprinkler (175 psi maximum)
- Chilled water
- Hydronic heating (with glycol)
- Low pressure steam (15 psi maximum)
- Ethanol
- Compressed Air
- Non-medical gases
- Vacuum (29.2" Hg maximum @ 68°F)

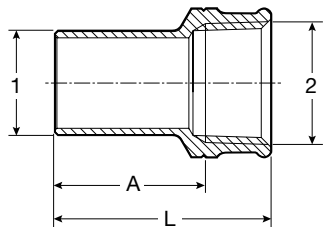
ProPress fittings are approved for installations in both above and below ground applications. Per code, local inspector approval must be obtained prior to installation below ground.

### Smart Connect® Technology

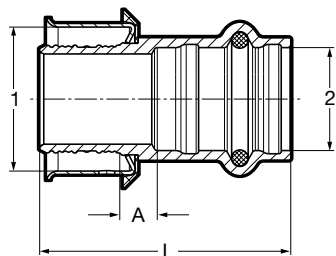
ProPress fittings are manufactured with Viega’s unique Smart Connect technology. Designed into the fitting itself, Viega Smart Connect technology allows identification of an unpressed fitting during pressure testing.

**Viega ProPress Adapter P x FPT - Model 0912XL**


Part No.	Size (in)	A (in)	L (in)
	1 2		
20819	2½ x 2½ FPT	1.53	4.15
20829	3 x 3 FPT	1.84	4.82
20839	4 x 4 FPT	2.09	5.55

**Viega ProPress Adapter Zero Lead Bronze FTG x FPT - Model 2912.1ZL**


Part No.	Size (in)	A (in)	L (in)
	1 2		
79425	½ x ⅜ FPT	1.10	1.54
79430	½ x ½ FPT	1.22	1.75
79435	½ x ¾ FPT	1.30	1.83
79440	¾ x ½ FPT	1.26	1.79
79445	¾ x ¾ FPT	1.28	1.83
79455	1 x ½ FPT	1.35	1.99
79450	1 x 1 FPT	1.33	1.99
79460	1¼ x ½ FPT	1.65	2.19
79465	1¼ x 1¼ FPT	1.50	2.19
79470	1½ x 1½ FPT	1.88	2.56
79475	2 x 2 FPT	2.13	2.95

**Viega PEX Press Adapter Zero Lead Bronze P x P - Model 2813PZL**


Part No.	Size (in)	A (in)	L (in)
	1 2		
99620	½ x ½	0.29	1.61
99626	½ x ¾	0.43	1.83
99630	¾ x ½	0.23	1.56
99640	¾ x ¾	0.33	1.73
99645	1 x ¾	0.35	1.87
99660	1 x 1	0.45	1.97
99665	1¼ x 1	0.49	2.26
99670	1¼ x 1¼	0.49	2.38
66675	1½ x 1	0.59	2.36
99680	1½ x 1½	0.59	2.87
99685	2 x 1	0.73	2.68
99690	2 x 2	0.59	3.21