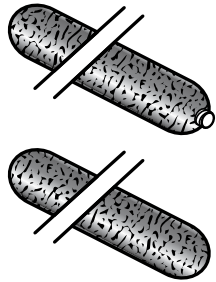


EZFLOW® ENGINEERED FRENCH DRAIN

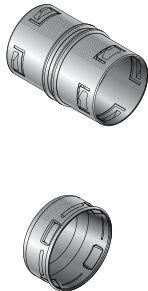
EZflow® Gravel-Free French Drain



Part No.	Description	Color	Bundle size/ Linear Feet	Wt. per Bundle (lbs.)	Product Class	Specifications
EZ-0701F	7" mesh with 3" slotted pipe (center)	Black	90	32.4	11RP	10 ft. polyethylene slotted drain pipe surrounded by 100% recycled polystyrene aggregate and enclosed in 30-sieve polyethylene geotextile mesh.
EZ-1001F	10" mesh with 4" slotted pipe (center)	Black	50	29.5	11RP	
EZ-1501F	15" mesh with 6" slotted pipe (center)	Black	20	26.0	11RP	
EZ-0701A	7" mesh without pipe – aggregate only	Black	90	18.0	11RP	10 ft. segment of 100% recycled polystyrene aggregate only, enclosed in 30-sieve polyethylene geotextile mesh.
EZ-1001A	10" mesh without pipe – aggregate only	Black	50	13.5	11RP	
EZ-1501A	15" mesh without pipe – aggregate only	Black	20	12.4	11RP	

DRAINAGE

EZflow® Internal Couplings & End Caps



Part No.	Description	Color	Pkg. Qty.	Wt. Ea. (lbs.)	Product Class
3C05	3" Corrugated Internal Coupling	Black	60/box	0.30	11RP
4C07	4" Corrugated Internal Coupling	Black	36/box	0.30	11RP
6C07	6" Corrugated Internal Coupling	Black	12/box	0.80	11RP
3C06	3" Corrugated End Cap	Black	33/box	0.30	11RP
4C06	4" Corrugated End Cap	Black	21/box	0.50	11RP
6C06	6" Corrugated End Cap	Black	15/box	0.50	11RP

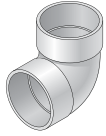
Storage & Flow for EZflow® Drainage Bundles *(45% void space among consolidated EPS aggregate)*

Pipe Bundles			EZ-0701F			EZ-1001F			EZ-1501		
Product	Storage Volume (gallons/10 ft. bundle)	Flow Capacity (gpm @ 1% slope)	7"	3"	7"	4"	7"	15"	6"	7"	NO PIPE
EZ-0701F	11.4	80.8	3" PIPE (CENTERED)			4" PIPE (CENTERED)			6" PIPE (CENTERED)		
EZ-1001F	21.5	130.9	NO PIPE			NO PIPE			NO PIPE		
EZ-1501F	45.8	345.0	NO PIPE			NO PIPE			NO PIPE		

Aggregate-Only Bundles			EZ-0701A			EZ-1001A			EZ-1501A		
Product	Storage Volume (gallons/10 ft. bundle)	Flow Capacity (gpm @ 1% slope)	7"	10"	15"	7"	10"	15"	7"	10"	15"
EZ-0701A	8.8	37.1	NO PIPE			NO PIPE			NO PIPE		
EZ-1001A	17.2	75.7	NO PIPE			NO PIPE			NO PIPE		
EZ-1501A	36.5	170.3	NO PIPE			NO PIPE			NO PIPE		

COMMON DRAINAGE FITTINGS

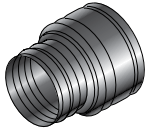
90 Degree PVC Elbow



	Part No.	Description	Color	Pkg. Qty.	Wt. Ea. (lbs.)	Product Class
PVC	3P02	3" PVC 90 Degree Elbow (HUB x HUB)	White	40	0.40	30PV
	4P02	4" PVC 90 Degree Elbow (HUB x HUB)	White	25	0.68	30PV
	6P02	6" PVC 90 Degree Elbow (HUB x HUB)	White	12	3.00	30PV

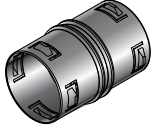
DRAINAGE

Corrugated Adapter



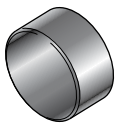
Part No.	Description	Color	Pkg. Qty.	Wt. Ea. (lbs.)	Product Class
351	3" Polyethylene Corrugated Adapter (CORR HUB x S&D SPT or HUB)	Black	50	0.10	30ST
451	4" Polyethylene Corrugated Adapter (CORR HUB x S&D SPT or HUB)	Black	25	0.20	30ST
651	6" Polyethylene Corrugated Adapter (CORR HUB x S&D SPT or HUB)	Black	12	0.25	30ST

Corrugated Internal Couplings



Part No.	Description	Color	Pkg. Qty.	Wt. Ea. (lbs.)	Product Class
3C05	3" Corrugated Coupling	Black	60	0.07	30PE
4C07	4" Corrugated Coupling	Black	36	0.08	30PE
6C07	6" Corrugated Coupling	Black	12	0.08	30PE

Corrugate End Caps



Part No.	Description	Color	Pkg. Qty.	Wt. Ea. (lbs.)	Product Class
3C06	3" Corrugated Endcap	Black	33	0.05	30PE
4C06	4" Corrugated Endcap	Black	30	0.06	30PE
6C06	6" Corrugated Endcap	Black	15	0.50	30PE

Note: See Fittings section (pages 158-176) for additional fitting options.