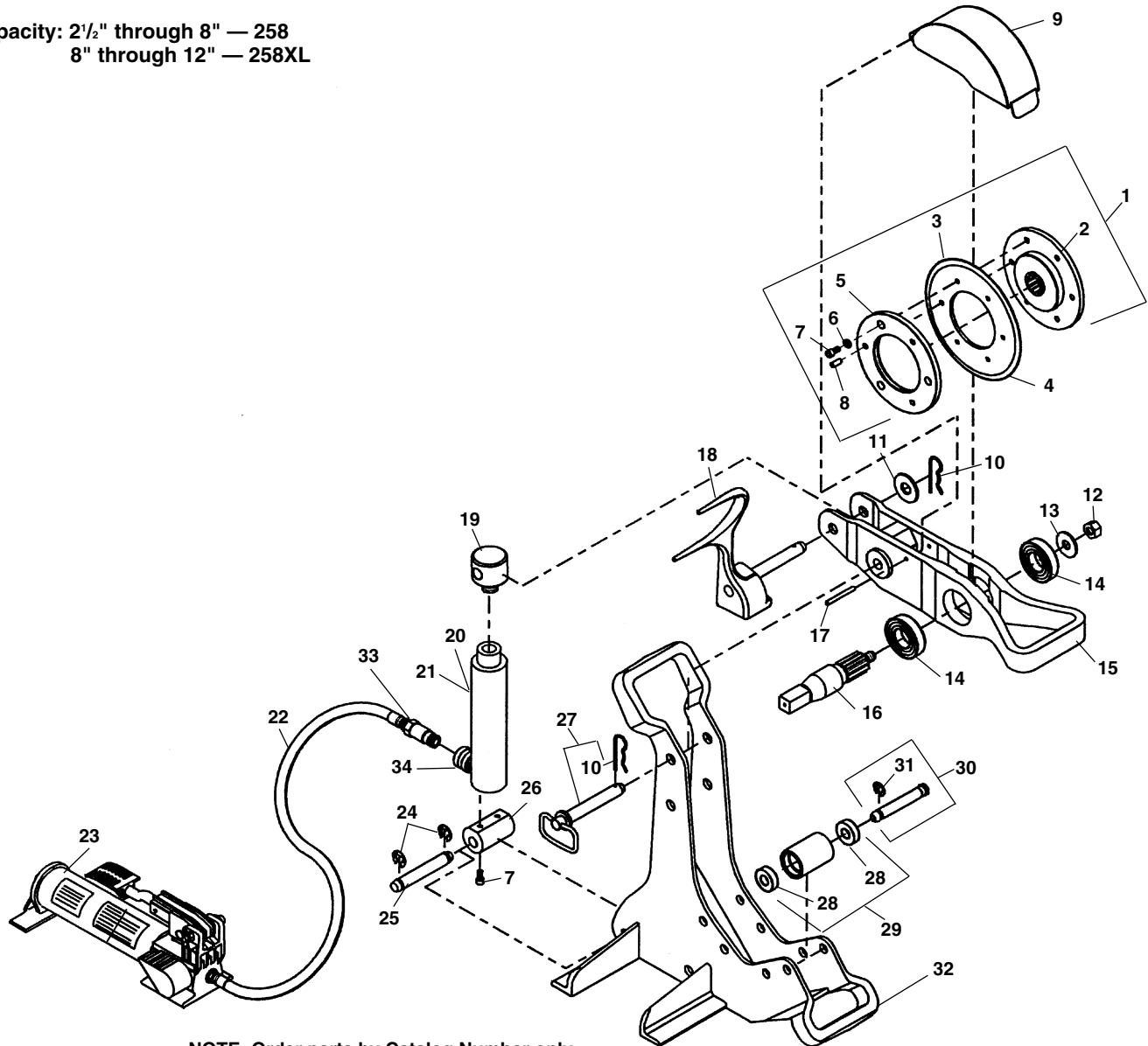


Frame

Capacity: 2½" through 8" — 258
8" through 12" — 258XL



**NOTE: Order parts by Catalog Number only.
DO NOT order by Reference Number.**

Ref. No.	Catalog No.	Description	Ref. No.	Catalog No.	Description
—	50767	258 Pipe Cutter	18	50882	Reaction Arm (258)
—	58227	258XL Pipe Cutter	18	58887	Reaction Arm (258XL)
1	66687	Cutter Wheel Assy. Std.	19	50877	Top Clevis
		Includes Ref. Nos. 2,3,5,6,7,8	20	59517	10 Ton Hyd. Cylinder
2	50782	Hub w/Pins	21	62557	Repair Kit f/Cylinder
3	50812	Cutter Wheel Std.	22	59507	Hydraulic Hose
4	58222	Cutter Wheel – Thin	23	59512	HF-32 Foot Pump Incl. Ref. No. 22
5	50792	Cover Plate	24	58850	E-Clip (2)
6	40770	Lock Washer 5/16" (5)	25	54327	Bottom Clevis Pin
7	50997	Screw 3/16" x 3/4" (5)	26	50867	Bottom Clevis
8	50787	Pins (3)	27	50847	Hitch Pin w/Hairpin (258 Only)
9	50777	Guard	28	44565	Ball Bearing (8)
10	50852	Hairpin Cotter (2)	29	50837	Roller
11	60995	Flat Washer 3/4" (258XL Only)	30	54887	Roller Pin (4)
12	50797	Locking Nut	31	42580	E-Clips (8)
13	41220	Flat Washer 5/8"	32	50842	Frame (258)
14	50802	Ball Bearing (2)	32	58882	Frame (258XL)
15	50807	Pivot Arm	33	62552	Hose Half Coupler
16	50827	Drive Shaft	34	62547	Ram Half Coupler
17	27052	Roll Pin 1/4" x 2 5/8"			