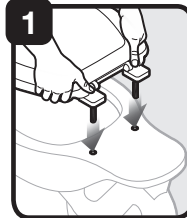


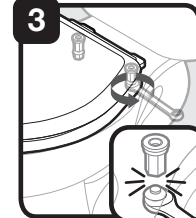
Tools required/Hardware kit includes



1 Place seat on bowl

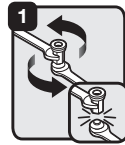


2 Attach nuts, finger-tighten

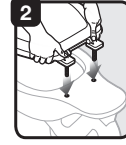


3 As you hold seat centered on bowl, tighten lower section of STA-TITE® nuts until they snap off

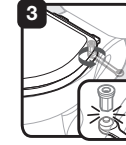
Alternate installation instructions for 1.28gpf bowls with restricted space



1 Prior to seat installation, pre-shear off bottom section of (1) nut using two 5/8" wrenches as shown. Discard lower portion of nut, keeping upper section with integrated washer for installation on restricted access side of bowl. Do NOT Shear remaining nut at this time.



2 Position sheared off nut directly beneath the side with restricted access bolt hole and as bolt is coming through bolt hole, finger-tighten nut to bolt, pulling it through hole as it is being threaded. Finger-tighten remaining nut on opposite side of bowl.



3 Holding seat centered on bowl, use a 5/8" wrench to tighten unsheared nut until lower portion of nut shears off. Use an open ended 5/8" wrench and tighten pre-sheared off nut 4-5 quarter turns, this will indicate proper tightening torque.