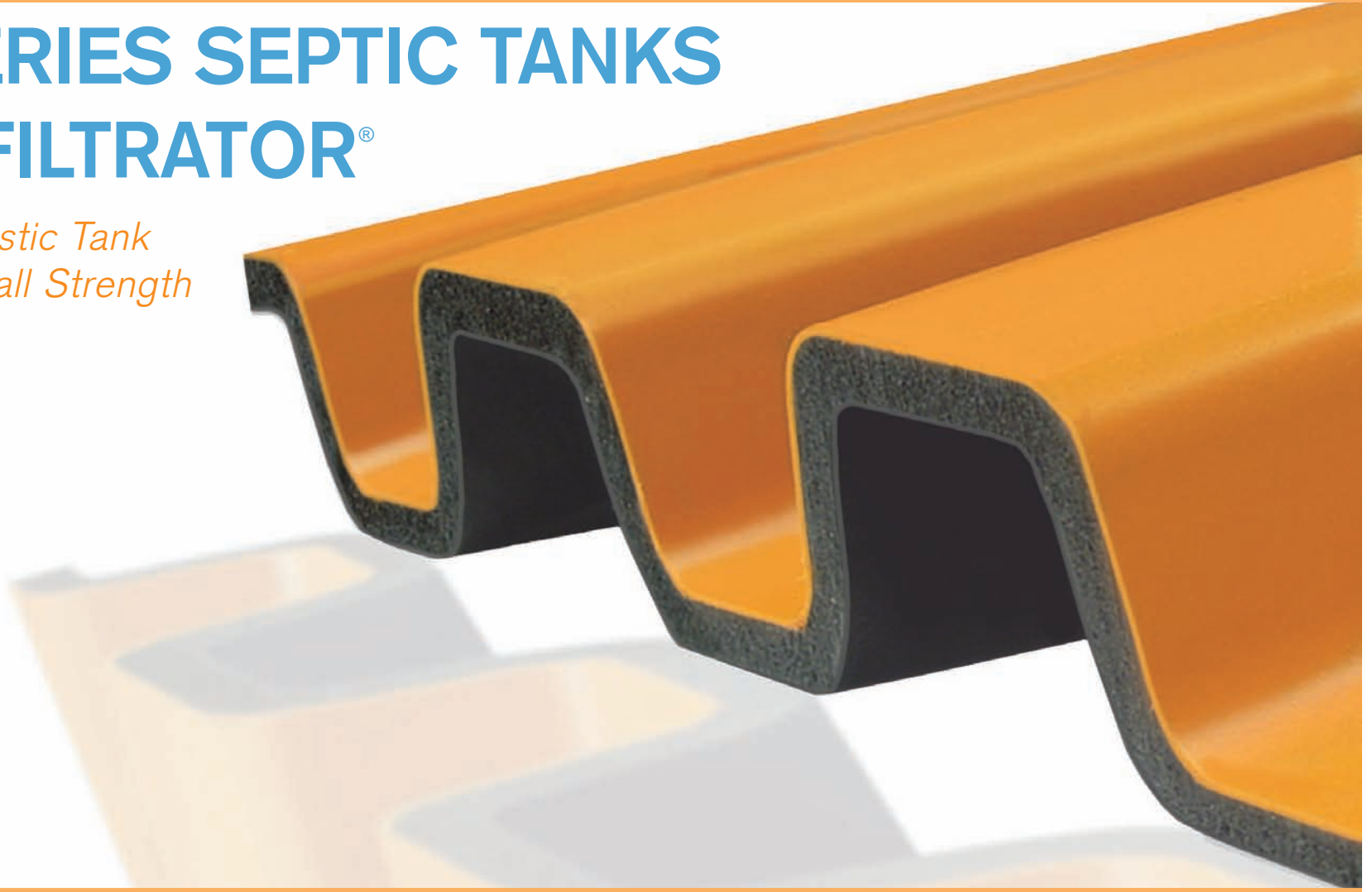


TW-SERIES SEPTIC TANKS BY INFILTRATOR®

*The Only Plastic Tank
with Triple-wall Strength*



Infiltrator TW-Series Septic Tanks are not only hard to miss, they represent a revolutionary improvement in plastic septic tank design, offering exceptional strength comparable to concrete tanks. The superior strength provided by these tanks offer long-term, water tight performance. Innovative features not found in any other plastic tank include: a consistent, thick triple wall design manufactured with proprietary state-of-the-art rotomolding technology; permanent, factory-installed structural bulkheads; welded, reinforced access ports.



FEATURES AND BENEFITS

Ease of Installation. TW-Series tanks offer a lightweight design for easy installation. They can be installed without special water filling procedures and can be pumped dry during pump-outs. They are also resistant to flotation in high water conditions.

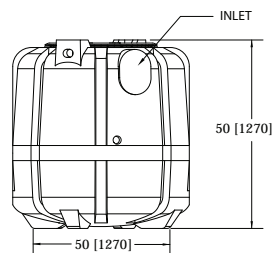
Superior Strength. A triple-wall provides a thick, composite wall structure that acts like a structural I-beam. Factory installed bulkheads offer superior structural stability under heavy loads. Reinforced, welded access ports do not distort upon backfilling or during pump-outs

Flexibility. These tanks are suitable for use as septic and pump tanks, come in single and dual compartments, and have flat bottoms allowing for easy storage.

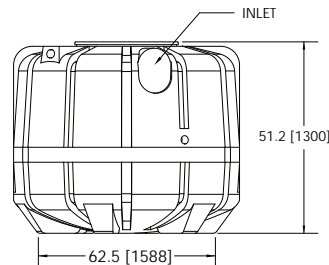
Innovative Technology. TW-Series septic tanks are the only plastic tank on the market manufactured with a proprietary state-of-the-art rotomolding process making these tough tanks comparable to concrete.

PRODUCT SIZES AND ACCESSORIES

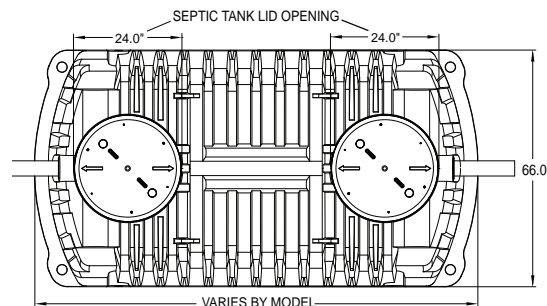
The TW-Series Septic Tanks by Infiltrator come in six different sizes: TW-300, TW-500, TW-900, TW-1050, TW-1250, and TW-1500 gallon. Tanks may be used as septic or pump tanks and come in single or dual compartments (except TW-300 and TW-500). Infiltrator's TW-Risers are compatible with any TW-Series Septic Tank.



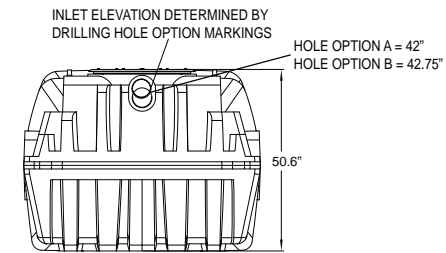
**TW-300
PROFILE VIEW**



**TW-500
PROFILE VIEW**



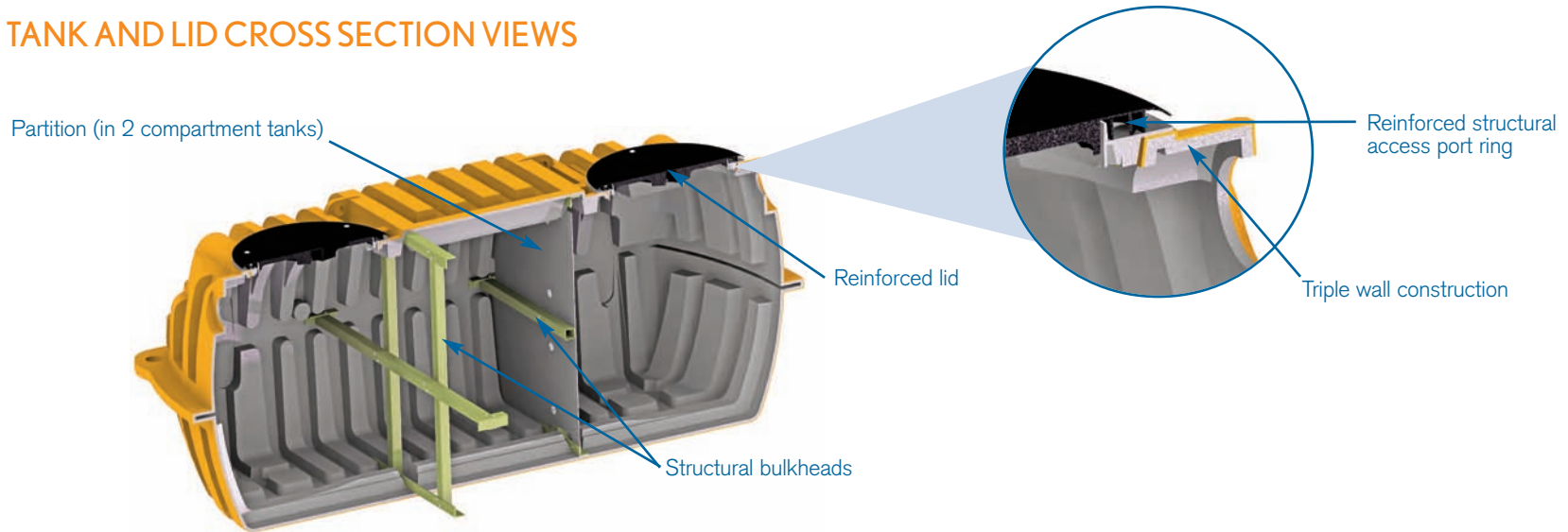
**TW-900, TW-1050, TW-1250, AND TW-1500
PLAN VIEW**



**TW-900, TW-1050,
TW-1250, AND TW-1500
INLET END VIEW**

For more information, call Infiltrator Systems at 800.221.4436 or visit www.infiltratorsystems.com

TANK AND LID CROSS SECTION VIEWS



TW-SERIES PUMP TANK NOMINAL SPECIFICATIONS

| Tank Model | Total Volume | Diameter | Height |
|------------|--------------------|---------------------|-------------------|
| TW-300 | 313 gal. [1,185 L] | 50 in. [1,270 mm] | 50 in. [1,270 mm] |
| TW-500 | 504 gal. [1,908 L] | 62.5 in. [1,588 mm] | 51 in. [1,295 mm] |



TW-SERIES SEPTIC TANK NOMINAL SPECIFICATIONS

| Tank Model | Total Volume | Length | Width | Height |
|------------|----------------------|----------------------|---------------------|---------------------|
| TW-900 | 1,055 gal. [3,994 L] | 110.4 in. [2,804 mm] | 66.0 in. [1,676 mm] | 50.6 in. [1,285 mm] |
| TW-1050 | 1,212 gal. [4,588 L] | 123.7 in. [3,142 mm] | 66.0 in. [1,676 mm] | 50.6 in. [1,285 mm] |
| TW-1250 | 1,448 gal. [5,481 L] | 143.7 in. [3,650 mm] | 66.0 in. [1,676 mm] | 50.6 in. [1,285 mm] |
| TW-1500 | 1,762 gal. [6,669 L] | 170.4 in. [4,328 mm] | 66.0 in. [1,676 mm] | 50.6 in. [1,285 mm] |



**INFILTRATOR SYSTEMS, INC. ("Infiltrator")
INFILTRATOR® TW™-SEPTIC TANK LIMITED WARRANTY**

FIVE (5) YEAR MATERIALS AND WORKMANSHIP LIMITED WARRANTY

(a) This limited warranty is extended to the end user of an Infiltrator TW™ Septic Tank. A Septic Tank manufactured by Infiltrator, when installed and operated in accordance with Infiltrator's installation instructions and local regulation by a licensed installer, is warranted to you: (i) against defective materials and workmanship for five (5) years after installation. Infiltrator will, at its option, (i) repair the defective product or (ii) replace the defective materials. Infiltrator's liability specifically excludes the cost of removal and/or installation of the Septic Tank.

(b) In order to exercise its warranty rights, you must notify Infiltrator in writing at its corporate headquarters in Old Saybrook, Connecticut within fifteen (15) days of the alleged defect.

(c) YOUR EXCLUSIVE REMEDY WITH RESPECT TO ANY AND ALL LOSSES OR DAMAGES RESULTING FROM ANY CAUSE WHATSOEVER SHALL BE SPECIFIED IN SUBPARAGRAPH (a) ABOVE. INFILTRATOR SHALL IN NO EVENT BE LIABLE FOR ANY CONSEQUENTIAL OR INCIDENTAL DAMAGES OF ANY KIND, HOWEVER OCCASIONED, WHETHER BY NEGLIGENCE OR OTHERWISE. SOME STATES DO NOT ALLOW THE EXCLUSION OR LIMITATION OF INCIDENTAL OR CONSEQUENTIAL DAMAGES, SO THIS LIMITATION OR EXCLUSION MAY NOT APPLY TO YOU. THIS WARRANTY GIVES YOU SPECIFIC LEGAL RIGHTS AND YOU MAY ALSO HAVE OTHER RIGHTS WHICH VARY FROM STATE TO STATE.

(d) THIS LIMITED WARRANTY IS THE EXCLUSIVE WARRANTY GIVEN BY INFILTRATOR AND SUPERSEDES ANY PRIOR, CONTRARY, ADDITIONAL, OR SUBSEQUENT REPRESENTATIONS, WHETHER ORAL OR WRITTEN. INFILTRATOR DISCLAIMS AND EXCLUDES TO THE GREATEST EXTENT ALLOWED BY LAW ALL OTHER WARRANTIES, WHETHER EXPRESS OR IMPLIED, OR STATUTORY, INCLUDING ANY WARRANTY OF MERCHANTABILITY, FINESSE FOR A PARTICULAR PURPOSE AND ANY IMPLIED WARRANTIES OTHERWISE ARISING FROM COURSE OF DEALING, COURSE OF PERFORMANCE, OR USAGE OF TRADE. NO PERSON (INCLUDING ANY EMPLOYEE, AGENT, DEALER, OR REPRESENTATIVE) IS AUTHORIZED TO MAKE ANY REPRESENTATION OR WARRANTY CONCERNING THIS PRODUCT, EXCEPT TO REFER YOU TO THIS LIMITED WARRANTY. EXCEPT AS EXPRESSLY SET FORTH HEREIN, THIS WARRANTY IS NOT A WARRANTY OF FUTURE PERFORMANCE, BUT ONLY A WARRANTY TO REPAIR OR REPLACE.

(e) YOU MAY ASSIGN THIS LIMITED WARRANTY TO A SUBSEQUENT PURCHASER OF YOUR HOME.

(f) NO REPRESENTATIVE OF INFILTRATOR HAS THE AUTHORITY TO CHANGE THIS LIMITED WARRANTY IN ANY MANNER WHATSOEVER, OR TO EXTEND THIS LIMITED WARRANTY.

CONDITIONS AND EXCLUSIONS

There are certain conditions or applications over which Infiltrator has no control. Defects or problems as a result of such conditions or applications are not the responsibility of Infiltrator and are NOT covered under this warranty. They include failure to install the Septic Tank in accordance with instructions or applicable regulatory requirements or guidance, altering the Septic Tank contrary to the installation instructions and disposing of chemicals or other materials contrary to normal septic tank usage.

The above represents the Standard Limited Warranty offered by Infiltrator. A limited number of states and counties have different warranty requirements. Any purchaser of a Septic Tank should contact Infiltrator's corporate headquarters in Old Saybrook, Connecticut, prior to such purchase to obtain a copy of the applicable warranty, and should carefully read that warranty prior to the purchase of a Septic Tank.



6 Business Park Road • P.O. Box 768
Old Saybrook, CT 06475
860.577.7000 • FAX 860.577.7001

800.689.7759
www.infiltratorsystems.com