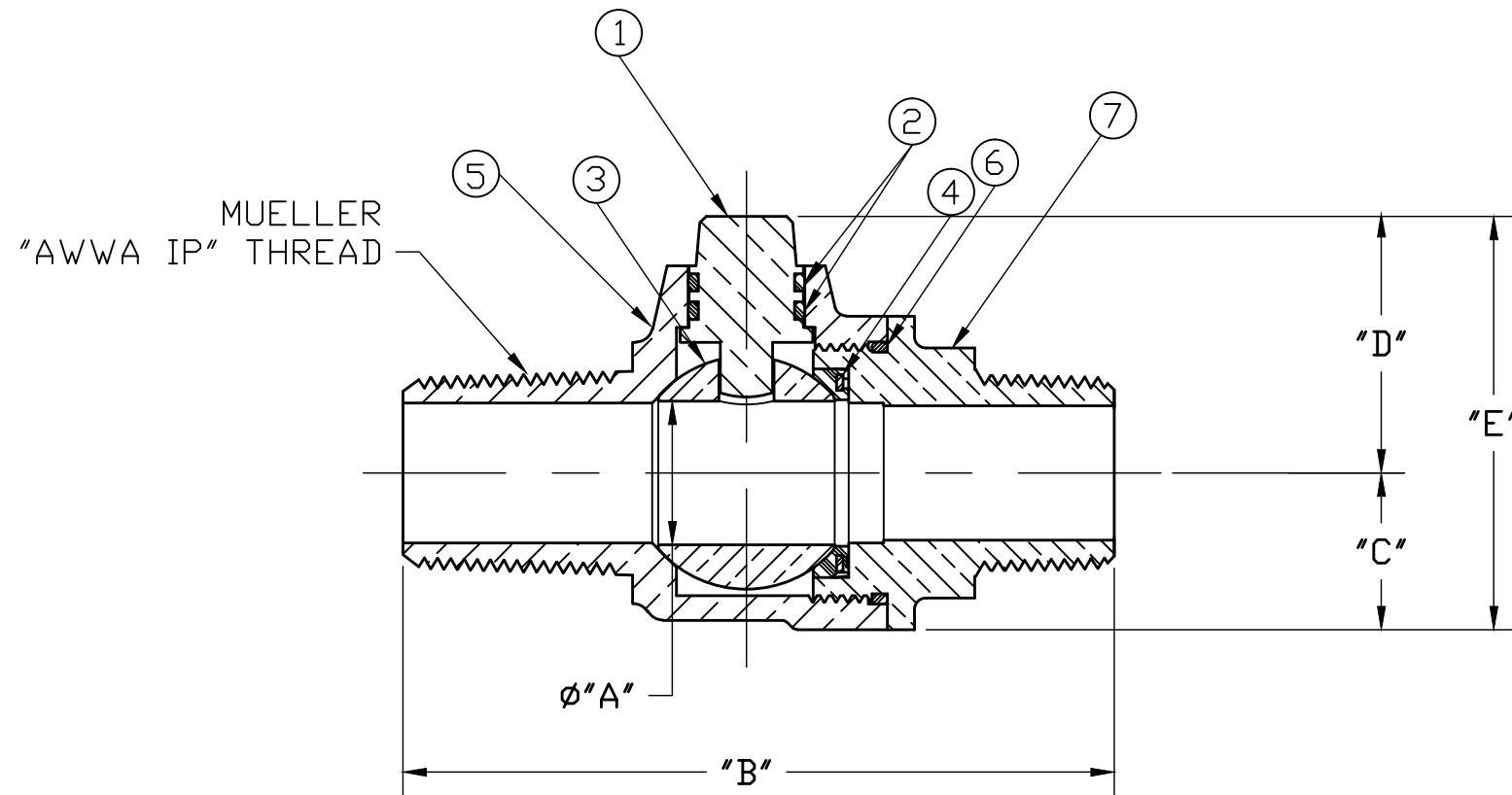

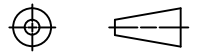


No.	QTY.	DESCRIPTION	MATERIAL
1	1	STEM	LOW LEAD BRASS ALLOY
2	2	O-RING	EPDM D2000
3	1	BALL	LOW LEAD BRASS ALLOY
4	1	GASKET - SEAL	NITRILE D2000
5	1	BODY	LOW LEAD BRASS ALLOY
6	1	O-RING	EPDM D2000
7	1	END PIECE	LOW LEAD BRASS ALLOY



SIZE	ØA	B	C	D	E
1 1/2	1.500	5.829	1.500	2.235	3.735
2	2.000	6.404	1.820	2.557	4.377

FILEPATH: PROD-ENG\MUELLER\APPROVED\B2969

DRFTR	RWB	6/25/03			
CHKR					
ENGR					
MGR					
			UNLESS OTHERWISE NOTED	THIRD ANGLE PROJECTION	
			SURFACE PREPARATION:		
			BREAK CORNER(S) ---- .000		
			SURFACE FINISH -- 000 RMS	REF. No.	SCALE
			TOLERANCE(S):		NONE
			LINEAR ----- ± .000		
			ANGULAR ----- ± 0°00'		
			BY	DATE	
			STK No:		
			MAT'L:		
			DESCR.	MUELLER CORP. STOP BALL VALVE	PART NUMBER
				("AWWA IP" x MIP)	B2969N
REV	ECR	DESCRIPTION	DATE	BY	CHKR
PER EST NO: DXXXX EST FIN WT = 0.0000 lbs					

PART NUMBER
B2969N
442-MRKTG

April 28, 2017

Subject: Mueller Co. Service Brass

To Whom It May Concern:

This will certify that Mueller Co. service brass, which includes corporation stops, curb stops, service fittings, meter valves, copper meter yokes and end connections, are manufactured and tested in accordance with the latest revision of AWWA C800 standard and are certified to NSF 61.

Components that come in contact with potable water comply with the latest requirements of the U.S. Federal Safe Drinking Water Act that was enacted on January 4, 2014.

Sincerely,



Larry Aulich
Senior Product Manager
Mueller Company