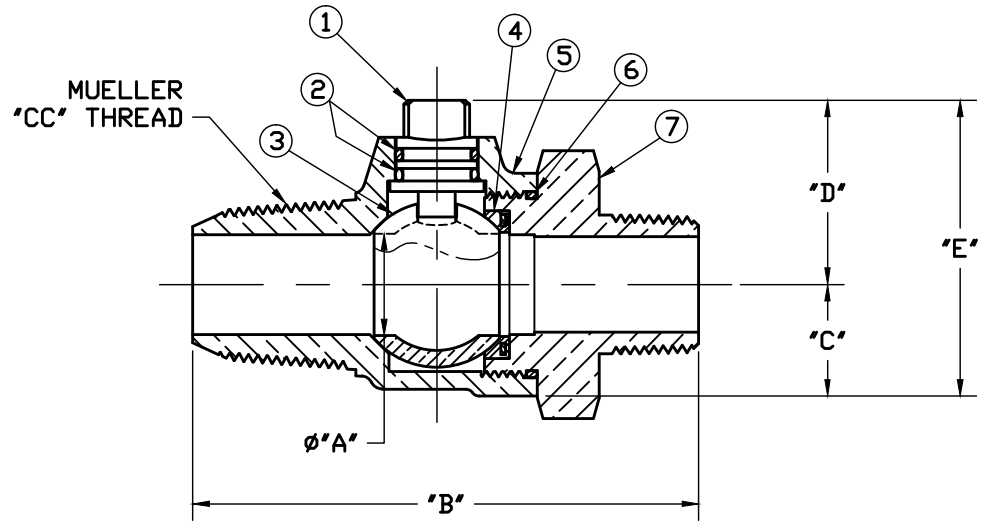



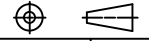
No.	DESCRIPTION	MATERIAL
1	STEM	LOW LEAD BRASS ALLOY
2	O-RING	EPDM D2000
3	BALL	LOW LEAD BRASS ALLOY
4	GASKET - SEAL	NITRILE D2000
5	BODY	CAST LOW LEAD BRASS ALLOY
6	O-RING	EPDM D2000
7	END PIECE	CAST LOW LEAD BRASS ALLOY



SIZE	ØA	B	C	D	E
3/4	.750	3.814	.840	1.390	2.203
1	1.000	4.525	1.150	1.591	2.714
1-1/2	1.500	5.829	1.500	2.235	3.735
2	2.000	6.404	1.820	2.557	4.377

NOTE: ALL WETTED PARTS ARE LOW LEAD BRASS ALLOY

FILEPATH: PROD-ENG/MUELLER/ASYSUBMITTALS/B2996N

DRFTR	JGarvin	9/17/09			
CHKR					
ENGR					
MGR					
			UNLESS OTHERWISE NOTED	THIRD ANGLE PROJECTION	
			SURFACE PREPARATION:		
			BREAK CORNER(S) ---- .000		
			SURFACE FINISH -- 000 RMS	REF. No.	SCALE
			TOLERANCE(S):		NONE
			LINEAR ----- ± .000		
			ANGULAR ----- ± 0°00'		
			STK No:		
			MAT'L:		
			DESCR.		
REV	ECR	DESCRIPTION	DATE	BY	CHKR
PER EST NO: DXXXX EST FIN WT = 0.0000 lbs					
				MUELLER CORP. STOP BALL VALVE	PART NUMBER
				LOW LEAD BRASS ("CC" x MIP)	B2996N

PART NUMBER
B2996N
442-MRKTNG