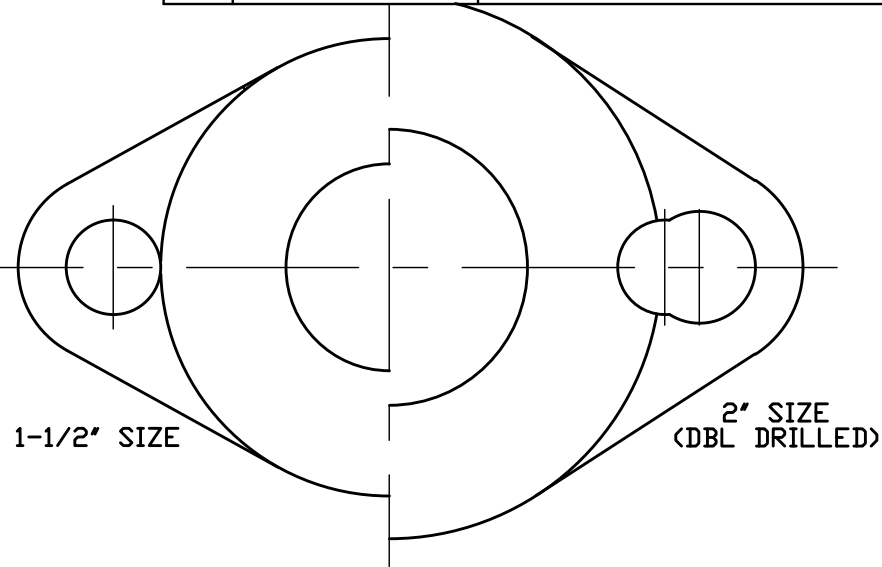
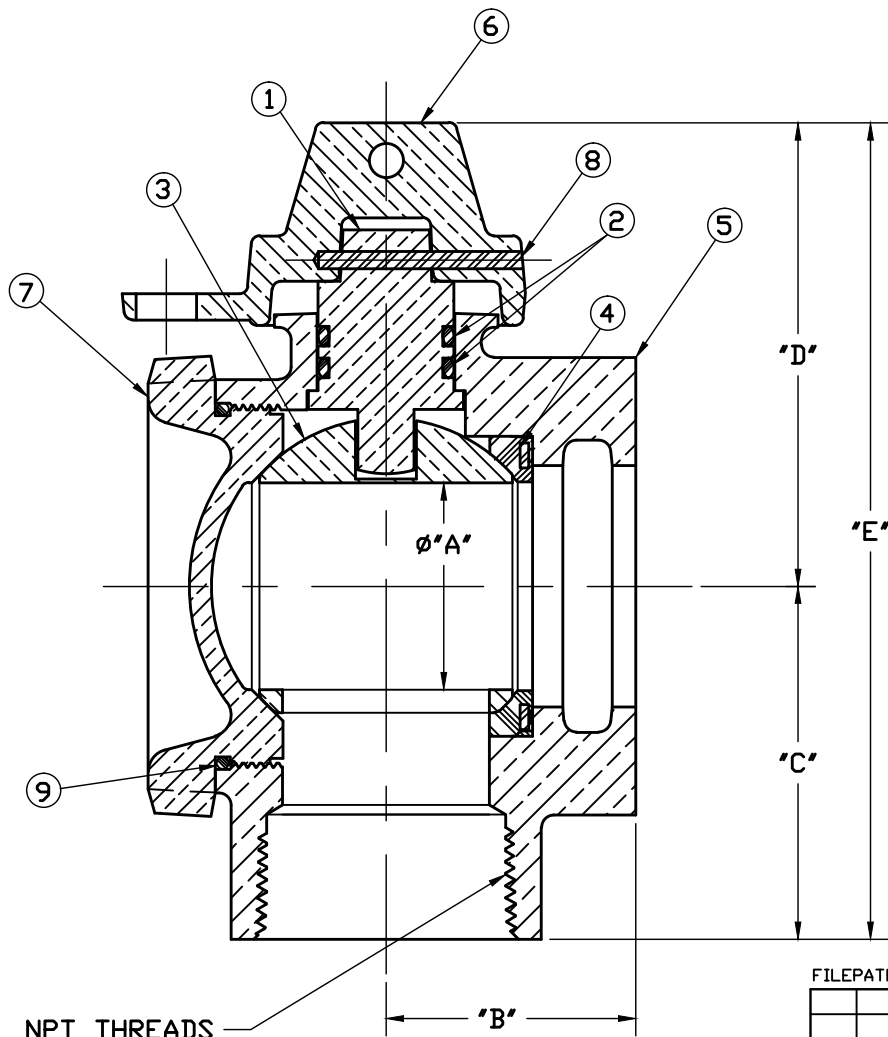


No.	DESCRIPTION	MATERIAL
1	STEM	LOW LEAD BRASS ALLOY
2	O-RING	EPDM D2000
3	BALL	LOW LEAD BRASS ALLOY
4	GASKET - SEAL	NITRILE D2000
5	BODY	CAST LOW LEAD BRASS ALLOY
6	CAP	CAST BRASS ASTM B62 ALLOY C83600
7	SEALING PLUG	CAST LOW LEAD BRASS ALLOY
8	ROLLPIN	STAINLESS STEEL ASTM A240 TYPE 302
9	O-RING	EPDM D2000



NOTE: ALL WETTED PARTS ARE LOW LEAD BRASS ALLOY

FILEPATH: PROD-ENG\MUELLER\ASYSUBMITTALS\B24286N

DRF TRJ	Garvin	12/21/09	Mueller Co.	UNLESS OTHERWISE NOTED THIRD ANGLE PROJECTION SURFACE PREPARATION: BREAK CORNER(S) ---- .000 SURFACE FINISH -- XX RMS TOLERANCE(S): LINEAR ----- ± .000 ANGULAR ----- ± 0°00'	REF. No.	SCALE NONE	
CHKR							
ENGR							
MGR							
BY	DATE		STK No:				
			MAT'L:				
REV	ECR	DESCRIPTION	DATE	BY	CHKR	DESCR.	
						ANGLE METER BALL VALVE LOW LEAD BRASS (FIP x METER)	
PER EST NO: DXXXX EST FIN WT = 0.0000 lbs						PART NUMBER	B24286N

SIZE	ØA	B	C	D	E
1-1/2	1.500	1.812	2.562	3.532	6.094
2	2.000	2.188	2.875	4.225	7.100

PART NUMBER
B24286N
442-MRKTG

NPT THREADS

April 28, 2017

Subject: Mueller Co. Service Brass

To Whom It May Concern:

This will certify that Mueller Co. service brass, which includes corporation stops, curb stops, service fittings, meter valves, copper meter yokes and end connections, are manufactured and tested in accordance with the latest revision of AWWA C800 standard and are certified to NSF 61.

Components that come in contact with potable water comply with the latest requirements of the U.S. Federal Safe Drinking Water Act that was enacted on January 4, 2014.

Sincerely,



Larry Aulich
Senior Product Manager
Mueller Company