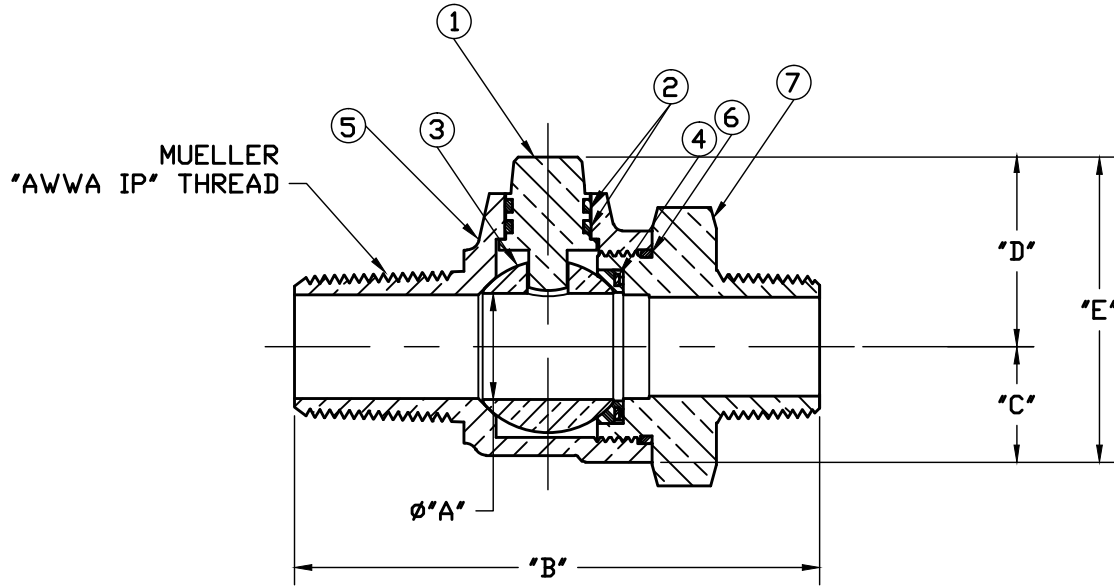


No.	DESCRIPTION	MATERIAL
1	STEM	LOW LEAD BRASS ALLOY
2	O-RING	EPDM D2000
3	BALL	LOW LEAD BRASS ALLOY
4	GASKET - SEAL	NITRILE D2000
5	BODY	CAST LOW LEAD BRASS ALLOY
6	O-RING	EPDM D2000
7	END PIECE	CAST LOW LEAD BRASS ALLOY



SIZE	ØA	B	C	D	E
3/4	.750	3.814	.840	1.370	2.210
1	1.000	4.525	1.150	1.571	2.721

**NOTE:** ALL WETTED PARTS ARE LOW LEAD BRASS ALLOY

FILEPATH: PROD-ENG/MUELLER/ASYSUBMITTALS/B20013N

						DRFTRJGarvin	12/21/09	<b>Mueller Co.</b>			
						CHKR				UNLESS OTHERWISE NOTED SURFACE PREPARATION: BREAK CORNER(S) ---- .000 SURFACE FINISH -- XX RMS TOLERANCE(S): LINEAR ----- ± .000 ANGULAR ----- ± 0°00'	THIRD ANGLE PROJECTION REF. No. SCALE NONE
						ENGR					
						MGR					
						BY	DATE				
						STK No:					
						MAT'L:					
REV	ECR	DESCRIPTION	DATE	BY	CHKR	DESCR.			PART NUMBER		
						CORPORATION STOP BALL VALVE LOW LEAD BRASS (AWWA IP' x MIP)			B20013N		
PER EST NO: DXXXX EST FIN WT = 0.0000 lbs											

PART NUMBER  
B20013N  
442-MRKTNG

April 28, 2017

Subject: Mueller Co. Service Brass

To Whom It May Concern:

This will certify that Mueller Co. service brass, which includes corporation stops, curb stops, service fittings, meter valves, copper meter yokes and end connections, are manufactured and tested in accordance with the latest revision of AWWA C800 standard and are certified to NSF 61.

Components that come in contact with potable water comply with the latest requirements of the U.S. Federal Safe Drinking Water Act that was enacted on January 4, 2014.

Sincerely,



Larry Aulich  
Senior Product Manager  
Mueller Company