

# StrongArm™

## Stub Out Bracketing System

Patent #8,061,390



### Solid

Rigidly secures any copper, PEX or CPVC CTS stub out and prevents all movement.

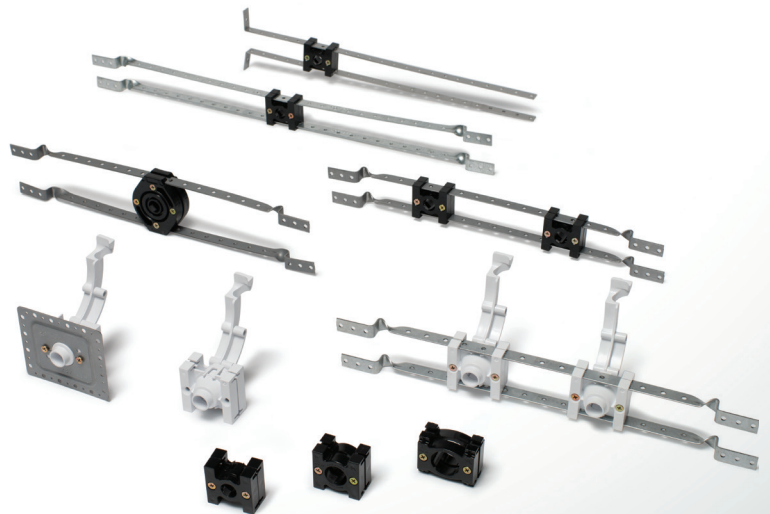
### Versatile

Available for 16" and 24" stud bays with either one or two pre-installed LockBlock™ devices.

### Cost Effective

Eliminates the need to solder stub outs and prevents stub outs from being damaged by other trades.

### Made in the USA



# Features & Benefits

Whether installing a copper stub out ell, or penetrating the wall with PEX, Sioux Chief's superior StrongArm™ bracketing system provides stub out solutions at rough-in.

## Solid

The LockBlock™ devices are designed to compress on the tube and grip the brackets preventing stub outs from moving.

## Versatile

The brackets are formed to work perpendicular to the stud and can be mounted on the face or within the stud cavity. The LockBlock™ is ideal for any 1/2", 3/4" or 1" copper, PEX or CPVC stub out; brackets are pre-assembled and available for any size stud cavity. The PEX Bend Support LockBlock™ swivels 360° to accommodate 1/2" PEX coming from any direction.

### LockBlock™

Rigidly secure any copper, PEX or CPVC stub out. Three sizes available: 1/2", 3/4" and 1"

### Brackets

Brackets are available for narrow (less than 10"), 16" and 24" stud bays

### PEX Bend Support

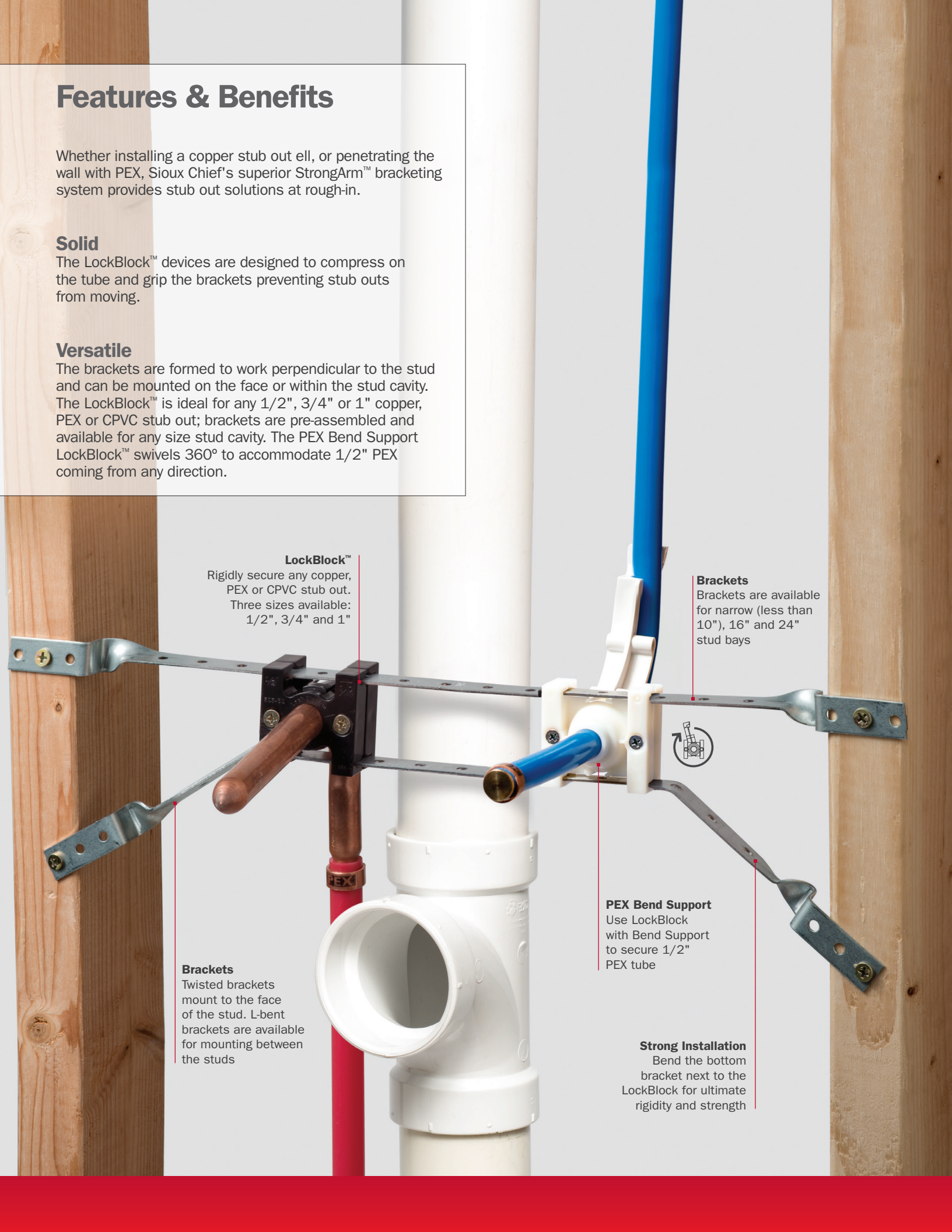
Use LockBlock with Bend Support to secure 1/2" PEX tube

### Brackets

Twisted brackets mount to the face of the stud. L-bent brackets are available for mounting between the studs

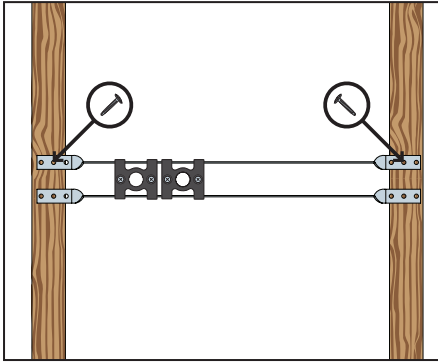
### Strong Installation

Bend the bottom bracket next to the LockBlock for ultimate rigidity and strength

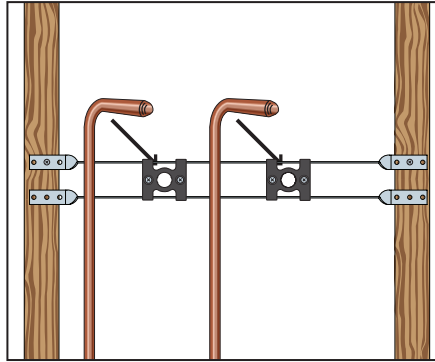


# Installation

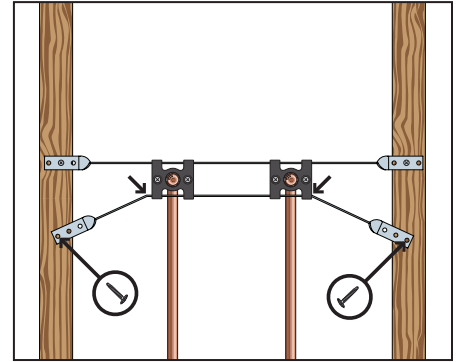
StrongArm brackets are pre-assembled.



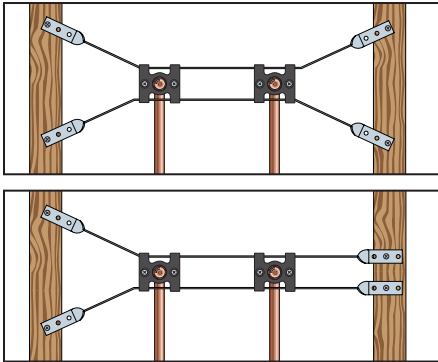
1. Secure top bracket to studs.



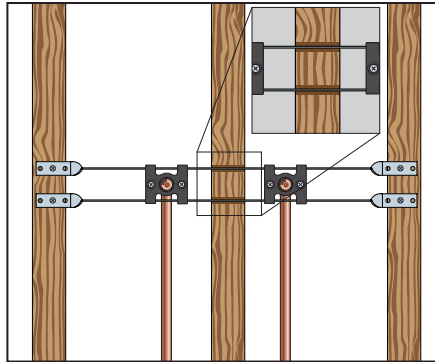
2. Slide block to stub out position. Insert stub out(s) and tighten screws.



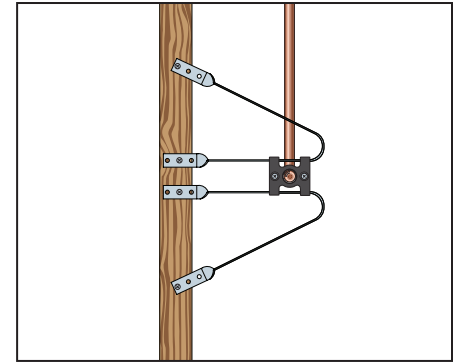
3. Bend bottom bracket and secure with screws.



4. Completed Installation and other acceptable options.

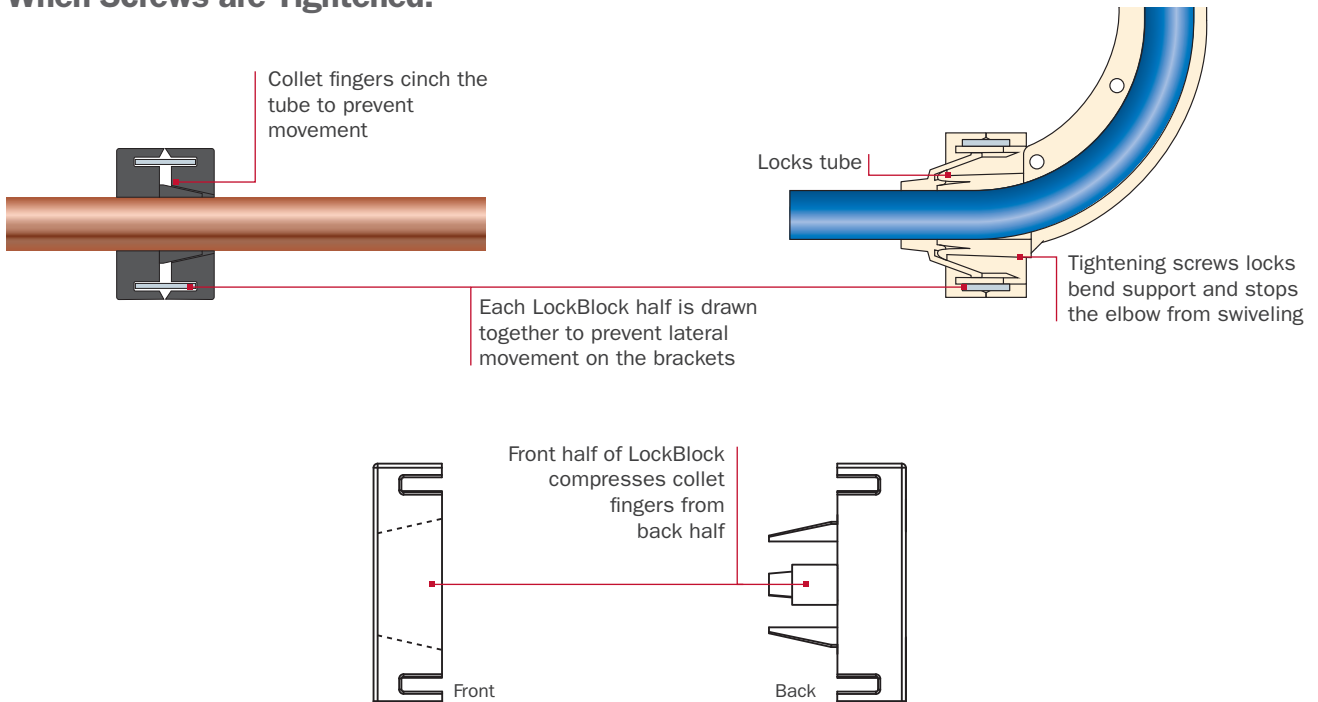


Make a horizontal cut in stud when stub outs are in separate stud bays.



Secure both brackets to a single stud when space is limited.

## When Screws are Tightened:





# Additional Product Options



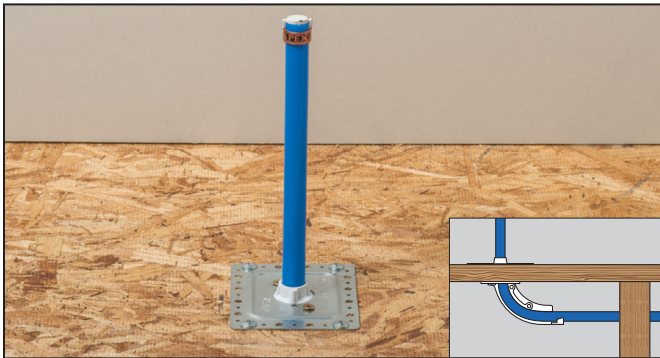
## LockBlock™

Bulk 1/2" and 3/4" LockBlocks move the tube off the mounting surface when secured directly to the stud.



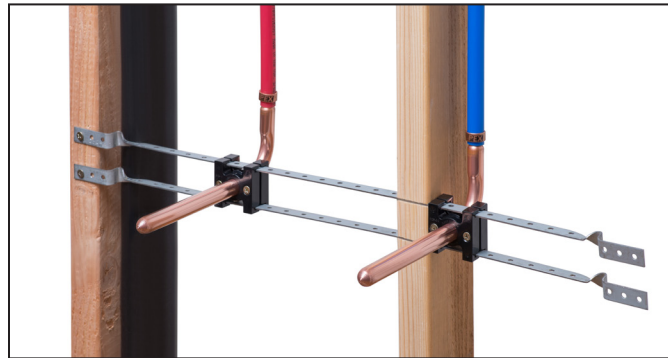
## PEX Bend LockBlock™

In tight places, PEX Bend Support LockBlocks can be installed directly to the stud with a 16-penny nail.



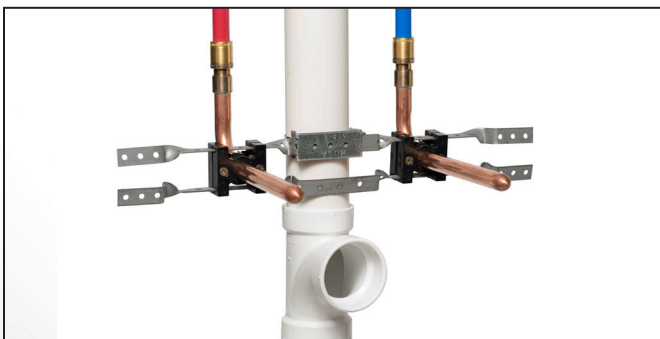
## Face Plate

Face Plates offer universal solutions when penetrating through the wall or sub-floor (riser).



## Separate Stud Bays

Make a 5/8" deep cut in the vertical stud for the bracket when stub outs are in separate stud bays



## StrongArm™ Vent Support

Pre-assembled to secure directly to the vent pipe when vertical studs are not present or conveniently located.



## Shower WallNut™ LockBlock™

Specifically designed to be used with the patented Shower WallNut™ shower arm adapter. Visit Sioux Chief's website for more information on the Shower WallNut and how it works.

