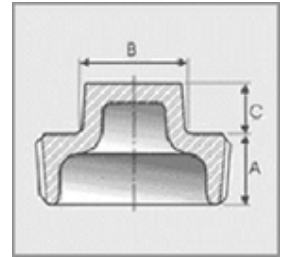


DIMENSIONAL SPECIFICATIONS

LEAD-FREE IMPORT BRASS FITTINGS* 125 LB.

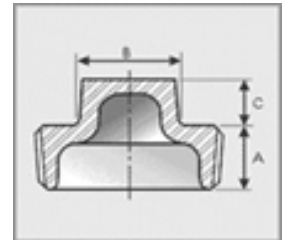
SQUARE HEAD CORED PLUG

| Part # | Size (IN.) | Approx. Net WT. (LB.) | A | B | C |
|-----------|------------|-----------------------|------|------|------|
| XNL117-08 | 1/2 | 0.11 | 0.54 | 0.56 | 0.38 |
| XNL117-12 | 3/4 | 0.16 | 0.55 | 0.63 | 0.44 |
| XNL117-16 | 1 | 0.25 | 0.69 | 0.81 | 0.50 |
| XNL117-20 | 1-1/4 | 0.38 | 0.71 | 0.94 | 0.56 |
| XNL117-24 | 1-1/2 | 0.52 | 0.73 | 1.13 | 0.62 |
| XNL117-32 | 2 | 0.83 | 0.76 | 1.31 | 0.68 |
| XNL117-40 | 2-1/2 | 1.26 | 1.07 | 1.50 | 0.74 |
| XNL117-48 | 3 | 1.49 | 1.13 | 1.69 | 0.80 |
| XNL117-64 | 4 | 3.20 | 1.22 | 2.25 | 0.92 |



SQUARE HEAD SOLID PLUG

| Part # | Size (IN.) | Approx. Net WT. (LB.) | A | B | C |
|------------|------------|-----------------------|------|------|------|
| XNL117A-06 | 3/8 | 0.07 | 0.41 | 0.44 | 0.31 |
| XNL117A-08 | 1/2 | 0.12 | 0.54 | 0.56 | 0.38 |
| XNL117A-12 | 3/4 | 0.18 | 0.55 | 0.63 | 0.44 |
| XNL117A-16 | 1 | 0.38 | 0.69 | 0.81 | 0.50 |
| XNL117A-20 | 1-1/4 | 0.59 | 0.71 | 0.94 | 0.56 |
| XNL117A-24 | 1-1/2 | 0.89 | 0.73 | 1.13 | 0.62 |
| XNL117A-32 | 2 | 1.39 | 0.76 | 1.31 | 0.68 |
| XNL117A-40 | 2-1/2 | 2.35 | 1.07 | 1.50 | 0.74 |
| XNL117A-48 | 3 | 3.59 | 1.13 | 1.69 | 0.80 |
| XNL117A-64 | 4 | 6.82 | 1.22 | 2.25 | 0.92 |



*Conforms with lead content requirements for lead-free plumbing as defined by the U.S. Safe Drinking Water Act. Certified <0.25 weighted average % lead.



MERIT BRASS

DIRECTING THE FLOW OF *Quality*