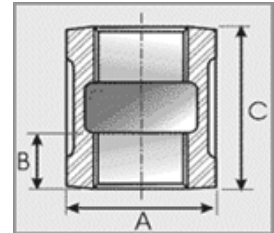


DIMENSIONAL SPECIFICATIONS

LEAD-FREE IMPORT BRASS FITTINGS* 125 LB.

COUPLING

Part #	Size (IN.)	Approx. Net WT. (LB.)	A	B	C
XNL111-02	1/8	0.06	0.56	0.26	0.80
XNL111-04	1/4	0.08	0.69	0.26	0.80
XNL111-06	3/8	0.14	0.84	0.36	1.05
XNL111-08	1/2	0.21	1.06	0.43	1.29
XNL111-12	3/4	0.30	1.31	0.50	1.43
XNL111-16	1	0.47	1.70	0.58	1.68
XNL111-20	1-1/4	0.56	2.03	0.67	1.86
XNL111-24	1-1/2	1.03	2.30	0.70	1.92
XNL111-32	2	1.06	2.81	0.75	2.20
XNL111-40	2-1/2	2.77	3.59	0.94	2.88
XNL111-48	3	2.75	4.16	0.98	3.18
XNL111-64	4	6.60	5.27	1.08	3.69



*Conforms with lead content requirements for lead-free plumbing as defined by the U.S. Safe Drinking Water Act. Certified <0.25 weighted average % lead.

MERIT BRASS

DIRECTING THE FLOW OF *Quality*