

Socket Weld Coupling

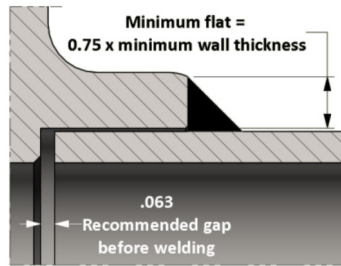
ISO 9001 & PED Certified
Canadian Registered in all provinces

Specification: ASME B16.11

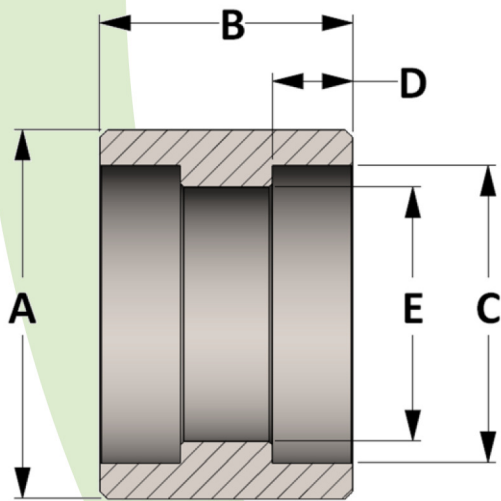
Material: Available in a complete range of Carbon Steels, Stainless Steels, Alloy Steels and Non-ferrous metals certified to ASTM, ASME, and Military standards.

Sizes: 1/8" - 12" in CL 3000 • 1/8" - 6" in CL 6000 • 1/8" - 4" in CL 9000
Also available in tube sizes, special pipe schedules/class rating, orifice holes, and special lengths

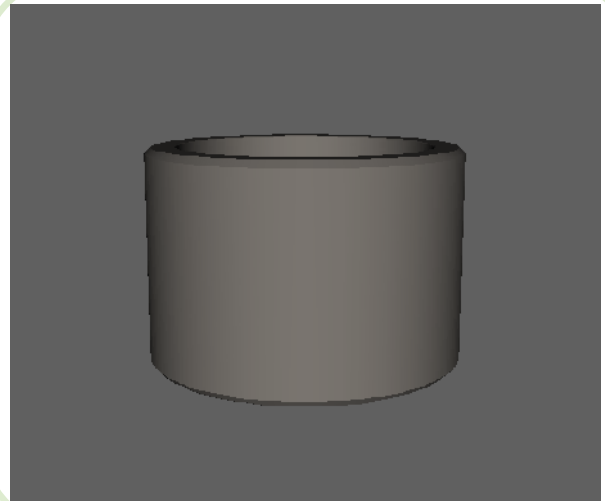
Welding Gap and Minimum Flat Dimension for Socket Weld Fittings



| Socket Weld Pressure Class | Pipe Schedule |
|----------------------------|---------------|
| Class 3000 | S80/XH |
| Class 6000 | S160 |
| Class 9000 | XXH |



Active
3D
Model



All dimensions are in inches • Weights are based on Carbon Steel

| PIPE SIZE | CLASS 3000 – Figure No. 13007 | | | | | | | | | | | | |
|-----------|-------------------------------|-------|-------|-------|-------|-------|-------|-------|-------|-------|-------|-------|-------|
| | 1/8 | 1/4 | 3/8 | 1/2 | 3/4 | 1 | 1-1/4 | 1-1/2 | 2 | 2-1/2 | 3 | 3-1/2 | 4 |
| A | 0.750 | 0.875 | 1.063 | 1.250 | 1.500 | 1.813 | 2.250 | 2.500 | 3.000 | 3.625 | 4.313 | 5.000 | 5.500 |
| B | 1.125 | 1.125 | 1.125 | 1.250 | 1.438 | 1.563 | 1.563 | 1.563 | 2.063 | 2.063 | 2.063 | 2.313 | 2.313 |
| C | 0.426 | 0.560 | 0.693 | 0.859 | 1.071 | 1.335 | 1.682 | 1.922 | 2.410 | 2.910 | 3.536 | 4.036 | 4.545 |
| D | 0.438 | 0.438 | 0.438 | 0.438 | 0.531 | 0.531 | 0.531 | 0.531 | 0.656 | 0.656 | 0.656 | 0.781 | 0.781 |
| E | 0.269 | 0.364 | 0.493 | 0.622 | 0.824 | 1.049 | 1.380 | 1.610 | 2.067 | 2.469 | 3.068 | 3.548 | 4.026 |
| LBS | 0.01 | 0.12 | 0.17 | 0.25 | 0.39 | 0.58 | 0.90 | 1.01 | 1.74 | 2.51 | 3.34 | 5.26 | 5.55 |

| PIPE SIZE | CLASS 6000 – Figure No. 16007 | | | | | | | | | | | | |
|-----------|-------------------------------|-------|-------|-------|-------|-------|-------|-------|-------|-------|-------|-------|-------|
| | 1/8 | 1/4 | 3/8 | 1/2 | 3/4 | 1 | 1-1/4 | 1-1/2 | 2 | 2-1/2 | 3 | 3-1/2 | 4 |
| A | 0.875 | 1.000 | 1.250 | 1.500 | 1.750 | 2.000 | 2.500 | 2.750 | 3.625 | 4.250 | 5.000 | 6.000 | 6.000 |
| B | 1.125 | 1.125 | 1.125 | 1.250 | 1.438 | 1.563 | 1.563 | 1.563 | 2.063 | 2.063 | 2.063 | 2.313 | 2.313 |
| C | 0.426 | 0.560 | 0.693 | 0.859 | 1.071 | 1.335 | 1.682 | 1.922 | 2.410 | 2.910 | 3.536 | 4.046 | 4.545 |
| D | 0.438 | 0.438 | 0.438 | 0.438 | 0.531 | 0.531 | 0.531 | 0.531 | 0.656 | 0.656 | 0.656 | 0.781 | 0.781 |
| E | 0.157 | 0.250 | 0.359 | 0.466 | 0.614 | 0.815 | 1.160 | 1.338 | 1.689 | 2.125 | 2.625 | 2.728 | 3.438 |
| LBS | 0.18 | 0.16 | 0.29 | 0.52 | 0.45 | 0.90 | 1.61 | 1.60 | 3.92 | 6.36 | 7.06 | 11.65 | 10.10 |

| PIPE SIZE | CLASS 9000 – Figure No. 19007 | | | | | | | | | | | | |
|-----------|-------------------------------|-------|-------|-------|-------|-------|-------|-------|-------|-------|-------|-------|-------|
| | 1/8 | 1/4 | 3/8 | 1/2 | 3/4 | 1 | 1-1/4 | 1-1/2 | 2 | 2-1/2 | 3 | 3-1/2 | 4 |
| A | 1.000 | 1.250 | 1.750 | 1.750 | 2.000 | 2.500 | 2.750 | 3.000 | 3.625 | 4.500 | 5.500 | 6.000 | 6.500 |
| B | 1.125 | 1.125 | 1.125 | 1.250 | 1.438 | 1.563 | 1.563 | 1.563 | 2.063 | 2.063 | 2.063 | 2.313 | 2.313 |
| C | 0.426 | 0.560 | 0.693 | 0.859 | 1.071 | 1.335 | 1.682 | 1.922 | 2.410 | 2.910 | 3.536 | 4.036 | 4.545 |
| D | 0.438 | 0.438 | 0.438 | 0.438 | 0.531 | 0.531 | 0.531 | 0.531 | 0.656 | 0.656 | 0.656 | 0.781 | 0.781 |
| E | 0.031 | 0.064 | 0.171 | 0.252 | 0.434 | 0.599 | 0.896 | 1.100 | 1.503 | 1.771 | 2.300 | 2.728 | 3.438 |
| LBS | 0.21 | 0.33 | 0.46 | 0.76 | 1.00 | 1.69 | 1.90 | 2.10 | 4.05 | 6.40 | 12.10 | 14.62 | 16.21 |