

SPECIFICATIONS

FIGURE 7701
STRUT ACCESSORIES



ROOFTOP SUPPORT BLOCK

FNW Figure 7701 rooftop support blocks are designed and engineered specifically for rooftop and raised floor applications. The patented* pipe supports are made from a UV- and weather-resistant foam and include galvanized strut channel that is compatible with FNW strut accessories.

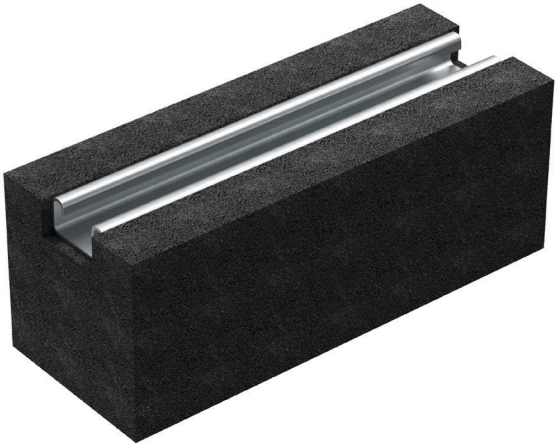
MADE IN THE
USA

FEATURES

- Made in the USA
- 50 lbs maximum load
- Closed-cell medium density black polyethylene foam (Ethafoam® 400 plank**)
- 14 gauge strut channel, ASTM 570 Gr 33 and ASTM A653 carbon steel, hot dipped mill galvanized
- Hot melt adhesive-bonding strut to foam block (Bondmaster Instaweld 34-3378)

* U.S. Patent No. 5,855,342
U.S. Patent No. 6,305,650

** Ethafoam® is a registered trademark of Sealed Air Corporation (US).



PRODUCT SPECIFICATIONS

Material Specifications and Finishes

- Included strut: 1-5/8" x 13/16" x 10" 14 ga galvanized
- Available in 4" and 6" heights
- Hot melt adhesive-bonding strut to foam block

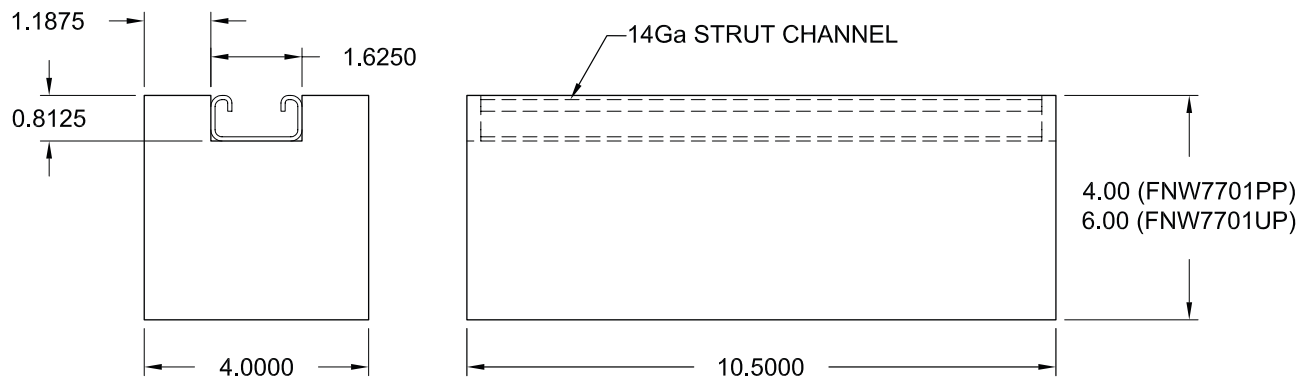
Catalog Number	Height		Width		Depth		Working Load*		Weight	
	in.	mm	in.	mm	in.	mm	lbs	kN	lbs	kg
FNW7701PP	4	102	4	102	10-1/2	267	50	0.22	1.06	0.48
FNW7701UP	6	152	4	102	10-1/2	267	50	0.22	1.25	0.57

* Calculated at 2 psi

FIGURE 7701
STRUT ACCESSORIES



ROOFTOP SUPPORT BLOCK



COMPONENTS

Ethafoam® 400 plank – The polyethylene foam offers excellent strength, resistance to creep under loadings up to 5.0 psi, vibration & shock absorbency and water resistance characteristics. Ethafoam HS 45 has successfully passed MVSS 302 flammability testing and meets or exceeds the requirements for U.S. Federal Standard PPP-C-1752C, Type III.

Ethafoam® is a registered trademark of Sealed Air Corporation (US).

Physical Properties	Test Method	Direction	Value
Density	D3575, Suffix W, Method B	N/A	3.9 pcf
Compression Set	ASTM D 3575, Suffix B	Vertical	<15%
Compression Creep @ 5.0 psi (1000 hr/72 F)	ASTM D 3575, Suffix BB	Vertical	<10%
Thermal Stability	ASTM D 3575, Suffix S	N/A	<1%
Water Absorption	ASTM D 3575, Suffix L	N/A	<0.2 lb/sq ft

14 Gauge Strut Channel – The 14 gauge strut channel is cold roll-formed from high-quality carbon steel. The channel finish is hot dipped mill galvanized. The raw steel used conforms to ASTM 570 GR 33 and ASTM A653.

BONDMASTER INSTAWELD 34-3378 – This adhesive is a sprayable heat- & moisture-resistant hot melt adhesive. It has a 350°F melting point and is applied by a nozzle applicator during the manufacturing process. It conforms to MS-CC926.