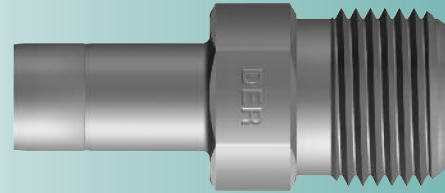


## Adapter Tube to Male Pipe



PART NUMBER	INTERCHANGES WITH	T TUBE O.D.	P PIPE END NPT	A	D	E <sup>1</sup> THRU HOLE	L	W	BH BODY HEX
2-DATPM-2	2-TA-1-2 2MA2N	1/8	1/8	1.156	.375	.093	.531	.022	7/16
2-DATPM-4	2-TA-1-4 2MA4N	1/8	1/4	1.375	.562	.093	.531	.022	9/16
3-DATPM-2	3-TA-1-2 3MA2N	3/16	1/8	1.187	.375	.187	.562	.022	7/16
3-DATPM-4	3-TA-1-4 3MA4N	3/16	1/4	1.406	.562	.281	.562	.022	9/16
4-DATPM-2	4-TA-1-2 4MA2N	1/4	1/8	1.250	.375	.171	.625	.032	7/16
4-DATPM-4	4-TA-1-4 4MA4N	1/4	1/4	1.469	.562	.171	.625	.032	9/16
4-DATPM-6	4-TA-1-6 4MA6N	1/4	3/8	1.500	.562	.171	.625	.032	11/16
4-DATPM-8	4-TA-1-8 4MA8N	1/4	1/2	1.718	.750	.171	.625	.032	7/8
5-DATPM-2	5-TA-1-2 5MA2N	5/16	1/8	1.297	.375	.187	.656	.032	7/16
5-DATPM-4	5-TA-1-4 5MA4N	5/16	1/4	1.500	.562	.250	.656	.032	9/16
6-DATPM-2	6-TA-1-2 6MA2N	3/8	1/8	1.343	.375	.187	.687	.032	7/16
6-DATPM-4	6-TA-1-4 6MA4N	3/8	1/4	1.547	.562	.281	.687	.032	9/16
6-DATPM-6	6-TA-1-6 6MA6N	3/8	3/8	1.562	.562	.281	.687	.032	11/16
6-DATPM-8	6-TA-1-8 6MA8N	3/8	1/2	1.781	.750	.281	.687	.032	7/8
8-DATPM-4	8-TA-1-4 8MA4N	1/2	1/4	1.750	.562	.281	.906	.047	9/16
8-DATPM-6	8-TA-1-6 8MA6N	1/2	3/8	1.781	.562	.375	.906	.047	11/16
8-DATPM-8	8-TA-1-8 8MA8N	1/2	1/2	2.000	.750	.391	.906	.047	7/8
10-DATPM-6	10-TA-1-6 10MA6N	5/8	3/8	1.844	.562	.375	.969	.047	11/16
10-DATPM-8	10-TA-1-8 10MA8N	5/8	1/2	2.062	.750	.468	.969	.047	7/8
10-DATPM-12	10-TA-1-12 10MA12N	5/8	3/4	2.062	.750	.500	.969	.047	1-1/16
12-DATPM-8	12-TA-1-8 12MA8N	3/4	1/2	2.062	.750	.468	.969	.047	7/8
12-DATPM-12	12-TA-1-12 12MA12N	3/4	3/4	2.062	.750	.594	.969	.047	1-1/16
12-DATPM-16	12-TA-1-16 12MA16N	3/4	1	2.359	.937	.594	.969	.047	1-3/8
14-DATPM-12	14-TA-1-12 14MA12N	7/8	3/4	2.125	.750	.687	1.031	.047	1-3/8
16-DATPM-12	16-TA-1-12 16MA12N	1	3/4	2.312	.750	.625	1.218	.047	1-1/16
16-DATPM-16	16-TA-1-16 16MA16N	1	1	2.625	.937	.797	1.218	.047	1-3/8

\*NOTE: All dimensions subject to change, to be used for reference only.

<sup>1</sup> The E dimension is the minimum opening. These fittings may have a larger opening at the pipe/straight thread end.