

KEEP THIS INSTRUCTION BOOKLET FOR FUTURE REFERENCE

Important : Please register your product online at www.santecfaucet.com within 30 days of purchase. Santec reserves the right to request additional documents before servicing warranty requests.

Spout

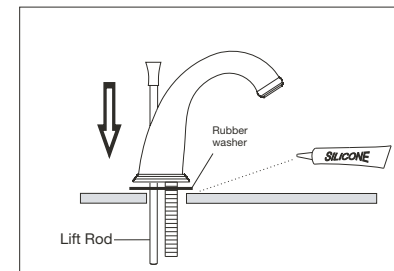
Flush both supply lines before installation. After flushing shut off both supply lines.

Hole size for the spout and handle trim is a minimum of 1 1/4" and a maximum of 1 1/2".

Spout Installation

- A** Remove tee connector, tee connector washer, and spout mounting hardware from bottom of spout assembly. Apply a ring of silicone caulking around the center hole on the top of the sink (do not use plumber's putty which can damage the spout finish).

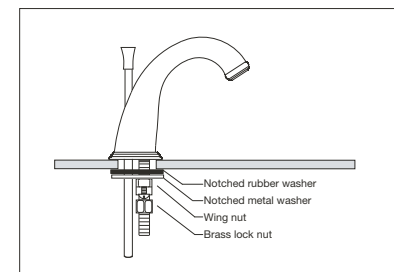
From the top of the deck, insert the spout's threaded shank and lift rod through the center hole of the sink or counter surface.



- B** Slip the spout mounting hardware back onto the spout. First the notched rubber washer, then the notched metal washer, wing nut, and brass lock nut.

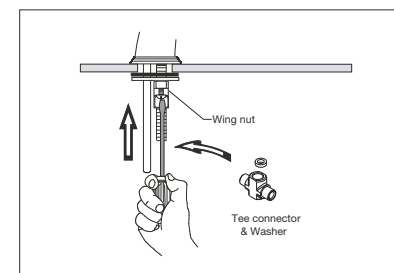
Make sure the lift rod operates smoothly. Adjust if necessary.

Hand tighten the lock nut.



- C** Align spout and secure to the sink or counter surface by tightening the 2 screws on the wing nut.

Place the tee connector washer into the tee connector and thread the tee connector onto the end of the spout shank. Hand tighten to seal.



Handle

Handle Installation

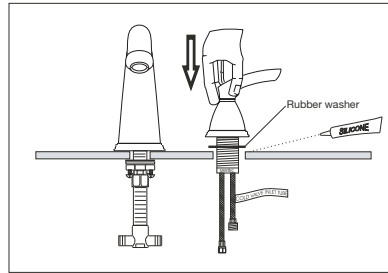
HANDLE TRIMS ARE READY FOR SIMPLE DROP-IN INSTALLATION. **DO NOT DISASSEMBLE.**

- A** Remove the valve body mounting hardware from the valve body.

Make sure the handle with the “cold” blue label is installed at the right side of the spout (looking from front) and the handle with the “hot” red label at the left side of the spout.

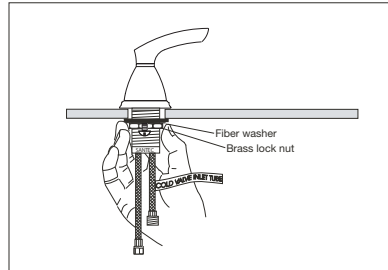
Apply a ring of silicone caulking around the handle hole on the sink or counter top (do not use plumber’s putty which can damage the finish of your faucet).

Slip the valve body’s flexible hoses from the top of the sink or counter through the appropriate hole next to the spout. Aim the tee connecting hoses toward the tee connector.



- B** Align the handle lever properly with respect to the spout.

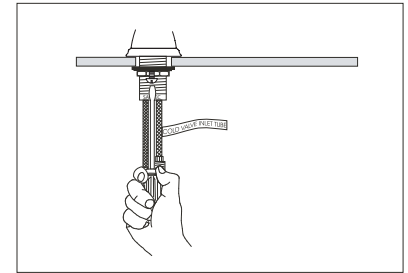
From under the basin or counter, hand tighten the brass lock nut and fiber washer to the valve body against the counter.



Handle

Handle Installation

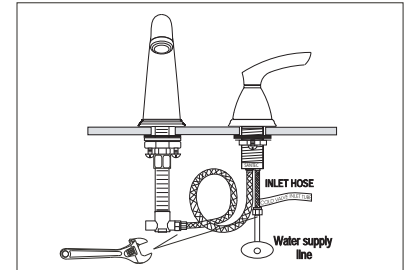
- C** Secure the valve body by tightening the screws attached to the lock nuts.



- D** Loop and connect the flexible hoses to the tee.

Tighten the nuts provided at the end of the hose to avoid leakage.

Connect and tighten the Inlet hoses to the supply lines. Use 1/2" IPS faucet connections, or 3/8" copper pipe using compression fitting system.

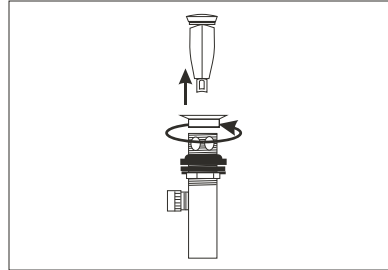


Pop-Up Drain

Pop-Up Drain Installation

- A** Remove the drain flange and drain plug from pop-up assembly.

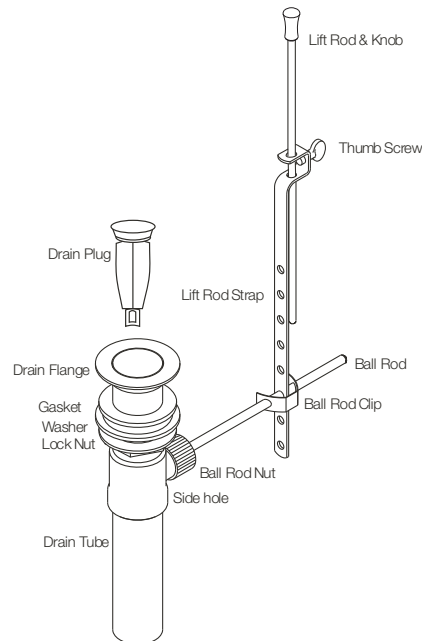
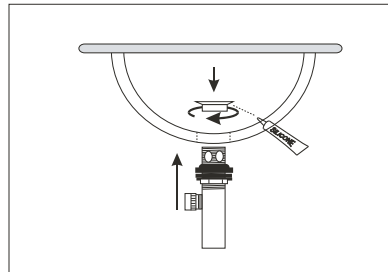
Do not remove the gasket, washer and lock nut.



- B** Apply a ring of silicone caulking underneath the drain flange (do not use plumber's putty).

Insert the threaded end of the assembly up from under the sink. Completely thread the drain flange onto the top of the drain tube.

Tighten the locknut from under the sink.



Pop-Up Drain

Pop-Up Drain Installation

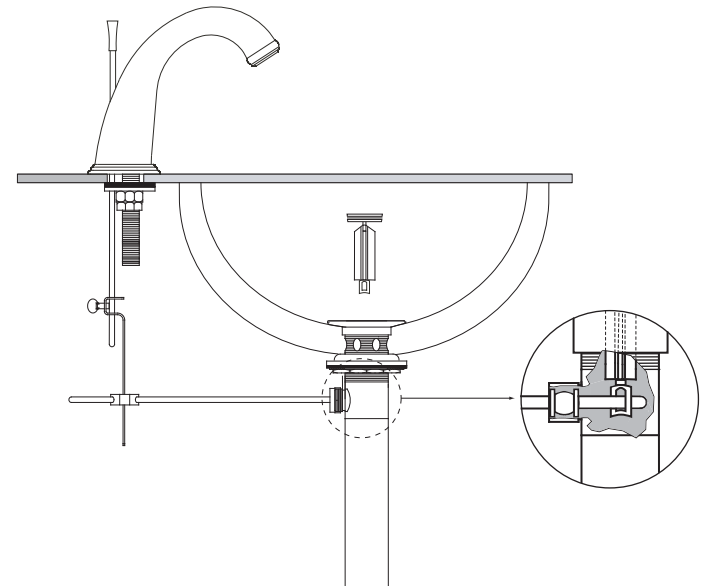
- C** Insert drain plug into drain flange. Make sure the adjustable eye-screw of the drain plug is facing back so that the ball rod will properly fit into it.

Insert ball rod washer into drain body followed by the ball rod, 2nd washer and ball rod nut. Tighten the ball rod nut so that the ball rod moves freely.

Slip the faucet's lift rod through the holes at the top of the lift rod strap and hand tighten the thumb screw. Push the ball rod down so the drain plug is in the up position.

Slip one leg of the ball rod clip onto the ball rod and slide the lift rod strap onto the ball rod using the nearest hole. Then slide the second leg of the clip onto the rod.

Test pop-up for smooth operation and adjust the strap if necessary.



Flush the Line

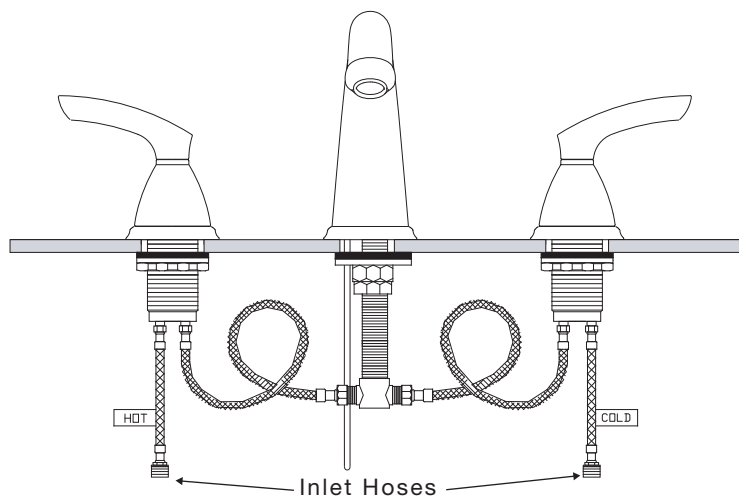
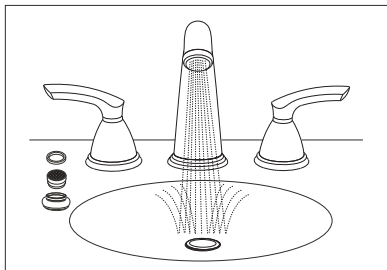
Flush the Line Instruction

After all the connections have been made, remove the aerator housing basket and washer.

Turn on the water on both hot and cold sides and flush the lines for 45 seconds.

Turn off the water and reinsert the washer, basket and Housing.

Turn on the water and check for leakages at all joints. If water leaks from any of the connections tighten the connection until the leakage stops.



SANTEC LIFETIME LIMITED WARRANTY

1. **Finishes:** Santec Polished Chrome, Polished Nickel and Satin Nickel finishes carry a Lifetime Limited warranty against manufacturing defects and tarnish to the original purchaser with the exclusion of kitchen drain assemblies which, due to the nature of their use, are not warranted. Santec recommended custom finishes carry a ten (10) years limited warranty against manufacturing defects and tarnish to the original purchaser with the exclusion of kitchen and pop-up drain assemblies which, due to the nature of their use, are not warranted. Kitchen products carry a three (3) year limited warranty.
2. **Cartridges:** Santec Cartridges carry a lifetime limited warranty against manufacturing defects for the life of the product to the original purchaser.
3. **Parts:** Santec parts carry a ten (10) year limited warranty against manufacturing defects, to the original purchaser. Kitchen products carry a five (5) year limited warranty.
4. **Warranty exclusions and limitations:** This warranty does not cover: damage due to negligence, accident, abuse, improper installation, or improper maintenance such as, but not limited to: heat from soldering during installation, the use of plumbers putty, damage from tools used during installation, the use or exposure to chemicals or cleaning products either abrasive or non abrasive or the use of any cleaning tool or product other than a soft, clean cloth. Pop-up assemblies are not covered under warranty. This warranty does not cover: changes in the finish or in the product due to normal wear or aging and does not cover any products or parts which have been altered or used in a manner not typical for the product. This warranty does not cover and Santec will not be held liable for damage to products caused by the freight carrier and a claim should be made immediately to the freight carrier should this occur. This warranty does not cover any cost involved in the installation, repair, or replacement of any Santec product or part. This warranty does not cover and Santec will not be held liable for any loss, damages, or expenses, incidental or consequential whatsoever, originating from the purchase, installation, use, repair, failure, or replacement of any Santec product or part, as allowed by law. The product or components of the covered product will either be repaired, refinished or replaced, at the sole discretion of Santec. Santec reserves the right to examine any product claimed defective prior to any warranty claim being accepted or processed, at its sole discretion. This warranty gives you specific legal rights and you may have other rights which may vary from state to state.

Effective 01/01/09 - Replaces and supersedes any previously issued warranty

FINISH CARE INFORMATION

For clear coated or enamel color finishes:

We recommend that all faucets, drains, etc be gently wiped dry with a soft cloth after use to avoid water spotting and water deposit buildup. A mild liquid hand soap, such as Ivory may be used occasionally if desired. Use of non-abrasive carnauba wax will add protection to the finish and should be used if the faucets will not be dried after use.

For non-clear coated and specialty finishes:

We recommend that all faucets, drains, etc be gently wiped dry with a soft cloth after use to avoid water spotting and water deposit buildup. Use of a non-abrasive carnauba wax is required occasionally.

PLEASE REGISTER YOUR PRODUCT ONLINE FOR WARRANTY SERVICES
www.santecfaucet.com/registration