

# Specification Sheet

## TWM-600 Meter Size: 3 inch

### Specifications

Size	3 in.
Typical Operating Range	4 - 600 gpm
100% ± 1.5%	3 gpm
Low Flow (Min. 95%)	450 gpm
Max Continuous Operating Flow	600 gpm
Max Operating Capacity	
Pressure Loss at Max	
Operating Capacity	2 psi
Max Operating Temperature	140°F
Max Operating Pressure	175 psi

Meets or exceeds latest revision of AWWA C701 Performance Standards

### Physical Characteristics

	Inches	lbs
Meter Length		
Flange Ends - Long	12	40.2
Flange Ends - Short	8.87	34.4
Meter Width	10	
Meter Height	14 1/8	

Meets or exceeds latest revision of AWWA C701 Dimensional Specifications

- Epoxy coated cast iron construction
- Copper can sealed register
- Remote ready
- Tempered glass resist scratching
- Large numbers for easy reading
- Test port
- Great low flow
- Can rebuild easily in the pit or meter box
- 5-year new meter accuracy warranty
- 25-year standard warranty for body
- Rated to 140°F



### Description

**Applications** - For use in measurement of potable cold water in commercial and industrial services where flow is in one direction only.

**Performance** - The TWM is designed for continuous operation at its highest operating flow rate. The measuring element is unsurpassed in its durability and long term accuracy. The TWM complies with ANSI/ AWWA Standard C701. Each meter is performance tested.

**Main casing** - Main casings are manufactured in cast iron and are epoxy powder coated for protection in all environments. The serial number is engraved on the body. The main case also shows the name of the manufacturer (IMC), the size and direction of flow.

**Register housing and lids** - Register housing and lids are made of a copper alloy containing not less than 57% copper such as UNS C85700 or UNS C86200; or similar copper alloy as listed in ASTM B584 or UNS C85800, as listed in ASTM B176.

**Measuring element** - The measuring element consists of the measuring element insert, rotor, inlet straightening vanes and the calibration assembly.

***Infinity Metering Company, Inc.***



**Construction** - The TWM construction consists of four basic components: main case, measuring element, register housing and permanently sealed register. The main case is cast bronze, compact and easy to handle. The measuring element consists of the rotor, straightening vanes, accuracy regulator, spindles, gears and drive coupling assembly. Through the magnetic coupling, rotor rotation is transmitted to a follower magnet which transmits rotation to the register gearing. The register housing is cast bronze or thermoplastic for durability.

**Register** - The registers are a straight reading odometer type with a sweep hand and leak detector. They are of the dry type with scratchproof lens, copper canned and vacuum-sealed so that it becomes impossible for the register to fog.

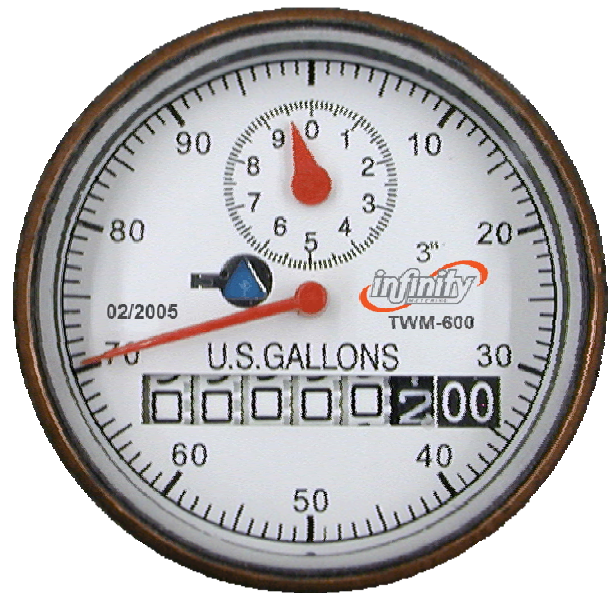
Register includes the following:

- Company name
- Month and year of manufacture
- Center sweep hand
- Large, easy to read numbers
- Size of meter
- Type of reading (example U.S. Gallons, Cubic Feet, or m3)
- Diamond shaped indicator detecting low flow or leaks

**Magnetic Drive** - Direct magnetic drive, through the use of high strength magnets provides positive, reliable and dependable register coupling.

**Test Plug** - A test plug is incorporated on all TWM meters to allow for field accuracy and pressure testing.

**Installation** - The meter must be installed in a clean pipeline, free from any foreign materials. The meter shall be installed with the direction of flow as indicated by the arrow cast in the meter case. The meter may be installed in horizontal or inclined lines up to 45°, with the register facing upward. Note; the meter must have 10 pipe diameters ahead of the unit and 5 after, of straight pipe, to ensure proper flow through the meter.



**Maintenance** - The TWM is designed to provide long-term service with minimal maintenance. When maintenance is required, the meter can remain in place and the measuring element with integral straightening vanes can be removed, repaired or replaced. Pre-tested and calibrated measuring elements are available for exchange or purchase.

**Connectors** - Companion flanges are available for the installation of the TWM on various types and sizes of pipe.

**Data Output** - Optional RSR (Retro Switch Register) activator offers compatibility with many data analysis and AMR systems.



**Infinity Metering Company, Inc.**

PO Box 948  
Claremore, OK 74018  
918-342-2752 or 888-342-2752  
FAX: 918-342-5949

Physical Address:  
21052 South 4175 Rd.  
Claremore, OK 74019

info@imcmeter.com  
www.imcmeter.com

---

Due to continuous research and product enhancements, Infinity Metering Company, Inc. reserves the right to change product or system specifications without notice, except to the extent an outstanding contractual obligation exists.

TWM-600U022309