

FIGURE G  
GAUGES & THERMOMETERS

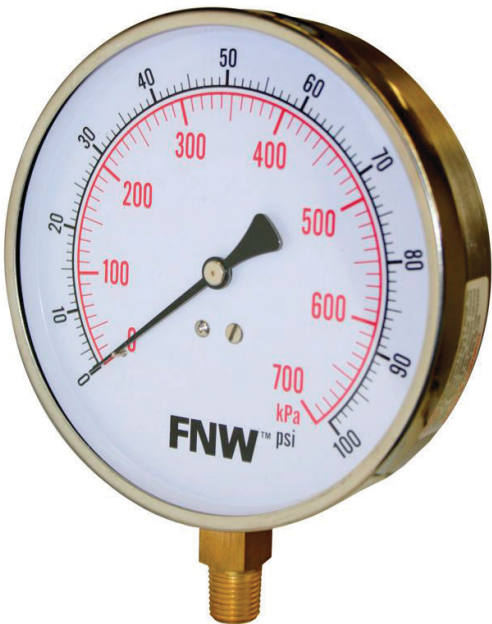


4-1/2" CONTRACTOR'S GAUGE

The contractor's gauge is designed for a wide variety of industrial applications, but it is especially suited for heating and air conditioning systems. The rugged gauge case is made of stainless steel to provide the protection needed in corrosive atmospheres.

FEATURES

- Dual scale (psi and kPa)
- +/- 1% Grade 1A per ANSI/ASME B40.100
- 304 stainless steel case and bezel ring
- Zero adjustment screw
- Phosphor bronze bourdon tube
- 1/4" Brass MNPT connection
- Brass movement
- Black anodized aluminum pointer
- White aluminum dial with black and red markings
- Silver solder welding
- Acrylic lens
- 75% of full scale working pressure
- 25% over-pressure limit
- -40°F–150°F (-40°C–65°C) process and ambient temperature limit
- IP52 enclosure rating
- CRN registered
- Lead-free version available, Figure FNWXG



DIAL RESOLUTION

Range (psi)	Per Mark (psi)
0–30	0.5
0–60, 100	1
0–160, 200	2
0–300	5

PART NUMBERS

Part Number	Range (psi)
FNWG030R	0–30
FNWG060R	0–60
FNWG0100R	0–100
FNWG0160R	0–160
FNWG0200R	0–200
FNWG0300R	0–300

