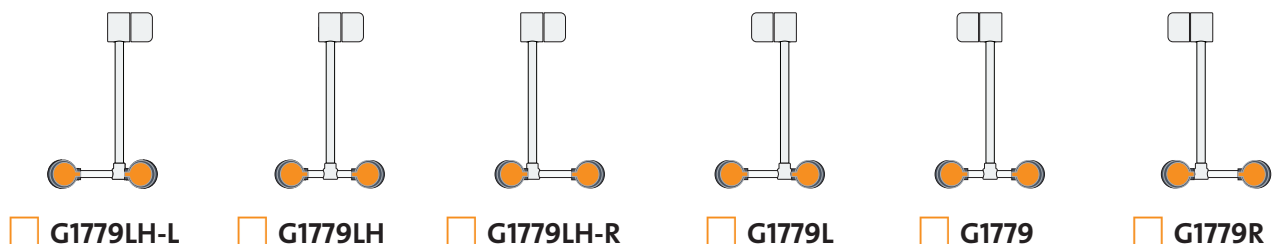


### ☐ **G1779** Eye/Face Wash, Deck Mounted AutoFlow™ 90° Swing-Down



**Application:** AutoFlow™ eye/face wash for mounting on counter. Spray heads swing down from storage to operational position, activating water flow. Available in a variety of spray head configurations to minimize obstructions at a sink. *Note: If unit is not installed at a sink, floor drain should be provided underneath unit to prevent accumulation of water on floor.*

**Spray Head Assembly:** Two FS-Plus™ spray heads. Each head has a “flip top” dust cover, internal flow control and filter to remove impurities from the water flow.

**Valve:** 1/2" IPS plug-type valve with Teflon® coated O-ring seals. Swinging head assembly down from storage to operational position opens orifice and activates water flow. Unit remains in operation until spray head assembly is returned to storage position.

**Strainer:** Unit is furnished with in-line strainer to protect valve and spray heads from debris in water line. Furnished with mounting hardware for securing unit to counter.

**Construction:** Polished chrome plated brass.

**Supply:** 1/2" NPT male inlet.

**Sign:** ANSI-compliant identification sign.

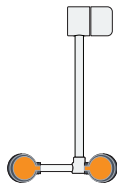
**Quality Assurance:** Unit is completely assembled and water tested prior to shipment.

#### Available Options

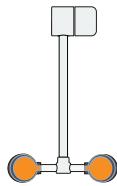
- ☐ **TMV** G3600LF thermostatic mixing valve precisely blends hot and cold water to deliver warm (tepid) water as required by ANSI Z358.1-2014. Refer to “Tempering Units” section for complete technical and product selection information.



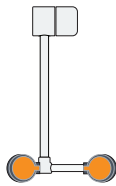
### □ **G1779** Eye/Face Wash, Deck Mounted AutoFlow™ 90° Swing-Down



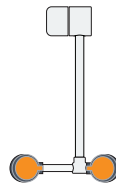
□ **G1779LH-L**



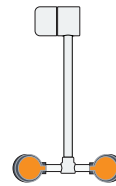
□ **G1779LH**



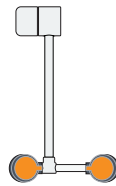
□ **G1779LH-R**



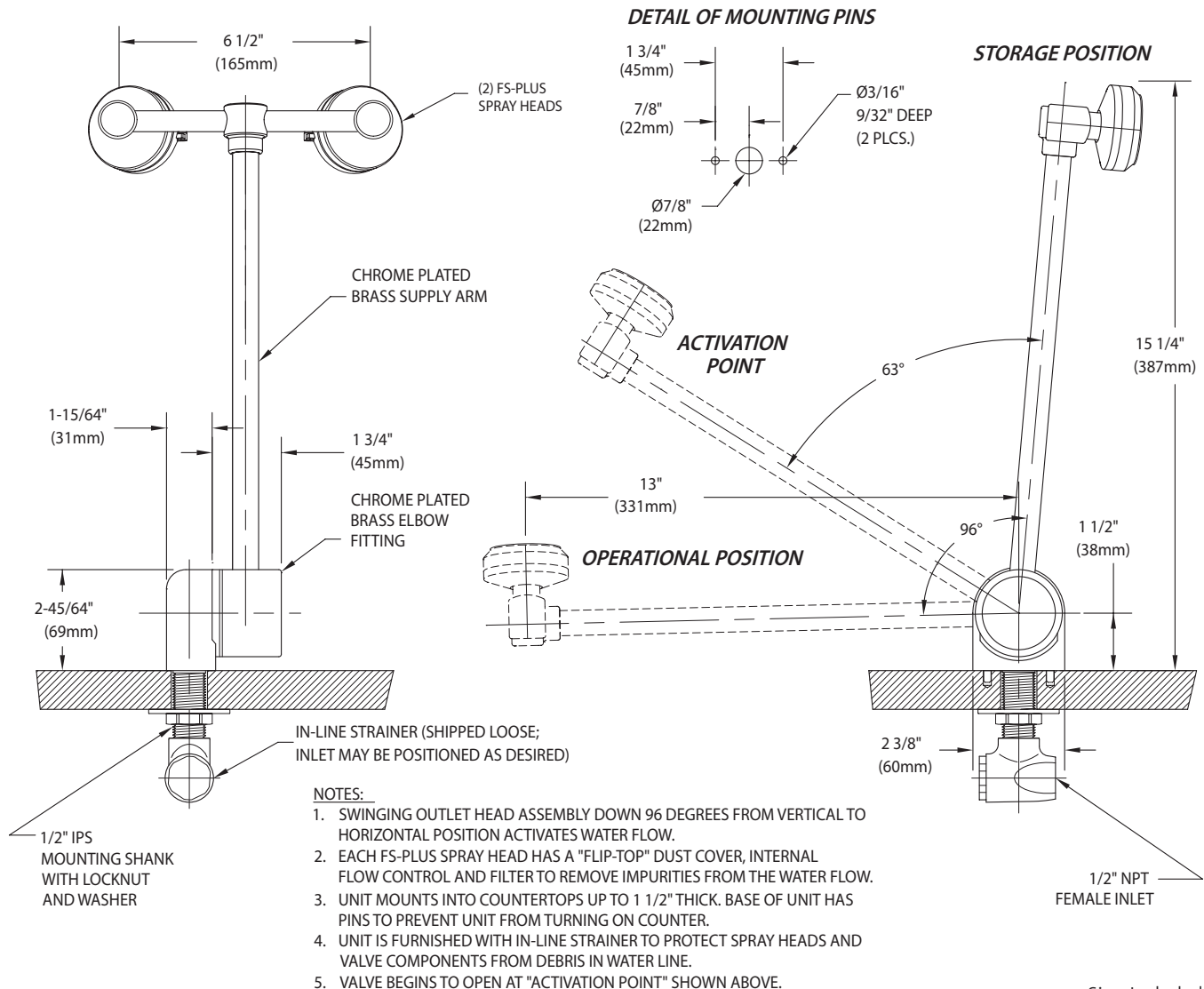
□ **G1779L**



□ **G1779**



□ **G1779R**



THIS SPACE FOR ARCHITECT/ENGINEER APPROVAL

Sign Included



Due to continuing product improvement, the information contained in this document is subject to change without notice. All dimensions are ± 1/4" (6mm). rev. 0215