

GERBER®

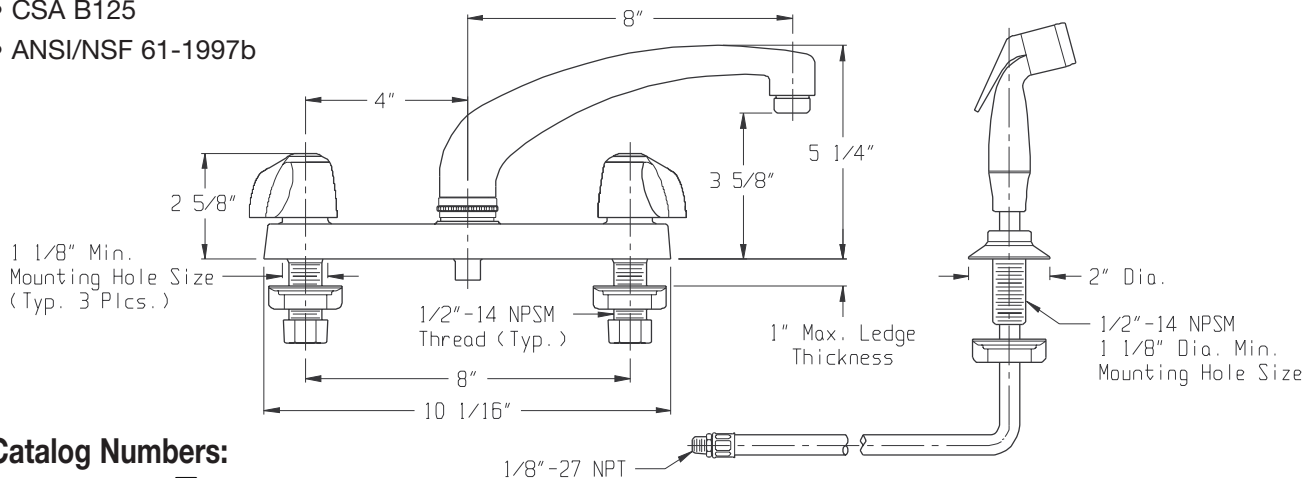
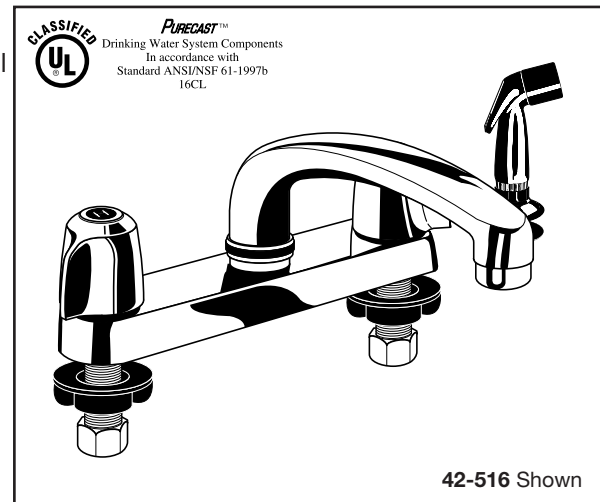
Two Handle Kitchen Faucet

Features:

- Cast brass underbody with heavy chrome plated brass shell
- Metal handles with acrylic hot and cold index buttons
- Compression stems with renewable brass seats
- Working parts can be easily replaced
- Cast brass spout
- 8" centers for mounting
- 2.2 gpm (8.3 L/min) @ 60 psi maximum aerator
- 1/2" NPSM supply connections with brass coupling nuts
- ADA compliant handles operate with less than 5 lbs. force

Technical Specifications:

- ASME A112.18.1M
- ASSE 1025
- CABO/ANSI A 117.1 (ADA)
- CSA B125
- ANSI/NSF 61-1997b



Catalog Numbers:

- 42-416 Less spray
- 42-516 With spray

Prefixes Available:

- 8- Crystalite Handles, Compression Stems
- X- Less Handles, Compression Stems
- 80- Metal Handles, Washerless Cartridges
- 88- Crystalite Handles, Washerless Cartridges
- C0- Metal Handles, Ceramic Cartridges
- C8- Crystalite Handles, Ceramic Cartridges
- CX- Less Handles, Ceramic Cartridges
- XX- Less Handles, Washerless Cartridges

Suffixes Available

- 45 Almond spray hose and holder (std on AL-units)
- 46 White spray hose and holder (std on WH-units)
- 47 Brass mounting nuts
- 49 Zinc die cast mounting nuts
- 66 Wrist blade handles
- 67 Vandal proof aerator- .5 gpm
- 68 Vandal proof aerator- 2.2 gpm
- 95 Monel seats in place of brass seats
- 96 Celcon seats in place of brass seats

GERBER®

PROFESSIONALLY MADE • PROFESSIONALLY SOLD • PROFESSIONALLY INSTALLED

Gerber Plumbing Fixtures Corp., 4600 W. Touhy Avenue, Chicago IL 60646

(847) 675-6570, FAX 1-800-5GERBER (Illinois FAX (847) 675-5192)

©1998 Gerber Plumbing Fixtures Corp. www.gerberonline.com

