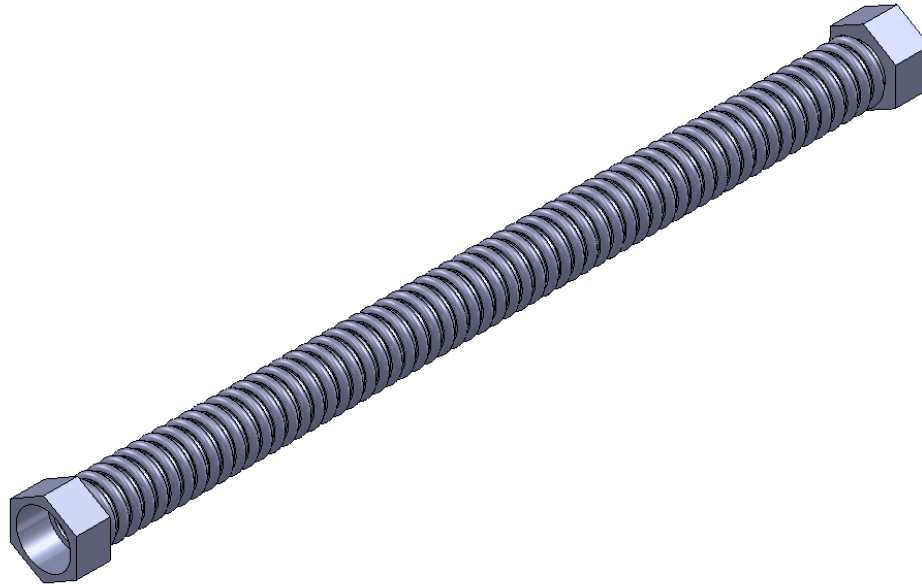


PRODUCT SPECIFICATION DRAWING

HOLDRITE® QUICK FLEX™ Connectors



HOLDRITE® QUICK FLEX™ Connectors are designed to provide fast and easy connections for water heaters and other equipment, such as boilers, water softeners, etc. They are made of large-ID corrugated stainless steel tube, which has higher flow rates than standard copper or braided connectors and isolates against electrolysis. These connectors are more flexible than standard copper flex connectors and are less likely to kink. Available in several sizes from 3/4" to 2" FIP connectors and from 12" - 24" lengths. For water use ONLY.

Product Information:

- Material: 304 Stainless Steel
- Chrome Plated Brass Nut (FIP x FIP swivel nuts)
- Meets ASME A112.18.6
- IAPMO Listed
- Meets UPC and IPC Codes
- Pressure rating: 125 Service/200 Max PSI
- Temperature rating: 190 Degrees
- Full Flow Connector - no Restrictions
- EPDM washer for chemical compatibility
- Easy Installation
- Complies with CA Lead Law



THIS INFORMATION IS PROPRIETARY TO HOLDRITE AND IS SUBJECT TO CHANGE WITHOUT NOTICE. IT MAY NOT BE REPRODUCED IN PART OR WHOLE WITHOUT WRITTEN AUTHORIZATION.



CONVERTING MAKESHIFT METHODS INTO ENGINEERED SOLUTIONSSM
 800-321-0316 OR 760-744-6944 / FAX: 760-744-0507 / WWW.HOLDRITE.COM
 spec_QFC_RevE

Product Submittal	
Job Name:	
Date:	
Part Number:	Qty:
Architect / Owner:	
Contractor:	
Notes:	